



Expertise

Protocol number: 41470144
Order No. / Reference: 25161314
Inspection date: 9 Sept 2025

Manufacturer: Volvo	Model: XC60 T6 AWD Recharge Geartronic R-Design
VIN: LYVUZH1UDNB043417	



Vehicle details	
Manufacturer / Type / Model / Equipment	
Volvo XC60 T6 AWD Recharge Geartronic R-Design	
Vehicle Identification number	LYVUZH1UDNB043417
Mileage (Read)	126,670 km
First registration	7 Jun 2022
Number of holders	1
Next periodical technical inspection	08/2027
(Report not on hand)	
Power / Engine displacement	186 kw / 1,969 ccm
Fuel type / Cylinder	Hybr.B/E ext. edition / 4
Gearbox / Number of gears	Automatic / 8
Type of drive	All-wheel drive
Type of vehicle	SUV
Colour / colour code	Onyx Schwarz-Metallic
Doors / Seats	5 / 5
Upholstery type	Cloth / leather combination
Colour of upholstery	Anthracite-Grey
Re/Import	no
Driving readiness	Roadworthy



Vehicle details

Maintenance booklet / proof	digital proof / complete	Next maintenance in	29,683 km
Last maintenance on / at	08/2025 at 126,353 km		
Key is / should be	2 / 2	FZG documents	ZB#2 (B) was available (copy), ZB#1 (S) was not available
		Letter No.	GJ549547
Previous damage / Accident	Detectable	Repainting	Detectable
Inspection conditions	sufficient	Lifting equipment / pit	yes
Test drive	Not performed	Engine function test	Performed
Driving readiness	Roadworthy		
Manufacturer key number/ type code number	9101 / BRS 00013		
Emission standard	EURO6;WLTP;AP;PI/CI; M, N1 I	Fine dust sticker	
Permitted total weight	2,660 kg	Empty weight	

Tyres

Mounted tyres

#	Tyre size	Type of tyre	Manufacturer	Tread depth
1)	255/40 R21 102V	Summer tyres on Light alloy	Pirelli	5mm / 5mm
2)	255/40 R21 102V	Summer tyres on Light alloy	Pirelli	5mm / 5mm

Additional tyres

#	Tyre size	Type of tyre	Manufacturer	Tread depth
1)	255/45 R20 105V	Winter tyres on Light alloy	Dunlop	5mm / 5mm
2)	255/45 R20 105V	Winter tyres on Light alloy	Dunlop	5mm / 5mm

Legend: Tread depth information for tires on the left is in the first place, for tires on the right is in the second place on the axle in the direction of travel

Equipment

Standard equipment

- 12 volt connection in the luggage compartment
- ABS - Anti-lock braking system
- Driver and passenger side airbags with two-stage deployment system
- Airbag, side airbags for driver and front passenger and curtain/shoulder airbags (IC) for all occupants
- Android infotainment system
- Exterior mirrors electrically adjustable and heated
- Hill Descent Control HDC
- Condensation sensor for automatic activation of the defroster function
- Brake light, third
- Anthracite headliner
- Roof rails in high-gloss black (integrated)
- Drive Mode
- Aluminum door sills with Recharge lettering, front
- Electronic differential lock
- Electric windows front and rear
- Automatic brake
- Transmission: 8-speed Geartronic automatic transmission
- Automatic tailgate
- Interior and exterior mirrors automatically dimming
- Intelligent driver information system
- Keyless Drive
- Automatic climate control with separate temperature control for driver and front passenger
- Paint finish: Uni
- Stainless steel loading sill protection in the luggage compartment
- Steering wheel: Multifunction buttons on the steering wheel
- Make-up mirrors for driver and passenger, illuminated
- Front center armrest with integrated storage compartment and cup holders
- Parking brake (electric)
- Radio accessories: Digital radio reception (DAB+)
- Radio accessories: Two USB-C interfaces on the back of the tunnel console
- Run-off Road Protection
- Rear seats in 40/60 ratio or completely foldable with through-loading function
- Power steering, speed-dependent
- Seat belts
- Seats: Leg rest adjustable (electrically) for driver and passenger seat
- Seats: Driver's seat electrically adjustable
- Sport exterior mirrors in high-gloss black
- Sport front and rear apron
- Sports pedals
- Start/Stop technology
- 12 volt connection at the front
- Acoustic Vehicle Alerting System (AVAS)
- Airbag, passenger side can be switched off
- Airbag, knee airbag for driver
- All-wheel drive (AWD)
- Ambient lighting
- Electrically foldable exterior mirrors
- Outside temperature display
- Hill Start Assist (HSA)
- Indicators (LED) integrated in exterior mirrors
- On-board computer
- CleanZone air quality system with activated carbon filter
- roof edge spoiler
- Digital Instrumentation 2nd Gen.
- Inlay aluminum inlay metal mesh
- Electronic Stability Control (ESC) - Electronic Stability Control
- Window frame in high-gloss black
- Luggage compartment partition net
- Google Services with navigation function
- Rear window, heated
- Interior lighting
- ISOFIX mount for the outer rear seats
- Child safety lock (rear doors)
- Headrests (5) front and rear
- Rear headrests foldable
- Loading box under the load compartment floor
- Load compartment blind
- Steering wheel adjustable for height and length
- Steering wheel: sports steering wheel
- Rear center armrest (folding)
- Package: Winter Package
- Panoramic glass sunroof with lifting function (electric)
- Upholstery: Partial leather/mesh textile sports seats
- Radio accessories: subwoofer
- Rain sensor
- Tire pressure monitoring system
- Wheels: Tire sealant
- Safety Assistance
- Whiplash Protection System (WHIPS)
- Safety braking system with disc brakes all around (internally ventilated)
- Seats: Driver and passenger seats height adjustable (electrically)
- Seats: Lumbar support (4-way electrically adjustable) for driver and front passenger seat
- Sport front grille with horizontal struts and surround in high-gloss black
- Phone: Inductive smartphone charging system



- Textile floor mats: Sport textile floor mats front and rear
- Glazing: Color glazing
- Volvo On Call
- Immobiliser

- First aid kit and warning triangle
- Lashing eyes in the luggage compartment (foldable)
- Preparation for Trailer Stability Control (TSA)
- Central locking with two radio remote controls and integrated emergency keys

Extra equipment

- Trailer hitch (semi-electric)
- Charging cable Type 2 / Type 2 (Mode 3) (7 m long, 1-phase, 16 A (for connection to a charging station with a Type 2 connector))
- Package: Xenium Package (High Performance Sound Pro audio system by Harman/Kardon - 600 watts of power - 14 speakers - Fresh Air subwoofer - Dirac Unison sound optimization - Advanced air quality system with fine dust filtration according to air quality standard PM2.5)
- Wheels: 21" 5-V-spoke diamond cut/high-gloss black alloy wheels (255/40 R21 tires with 8.5 x 21" rims)
- Seats: Child seats (2-stage) integrated in the outer rear seats
- Glazing: Acoustic glazing for the side windows (UV and burglar-resistant laminated glass panes)
- Windscreen, heater
- Package: Connect Edition (R-Design) (Electrically adjustable passenger seat - Headlight cleaning system - Driver Assistance - Passenger seat memory function - Full LED headlights - Front and rear parking sensors - Rear view camera - 21" 5-spoke diamond cut/gloss black with 255/40 R21 tires - Onyx Black Metallic)
- Radio: Premium Sound audio system by Bowers & Wilkins (1,460 watts of power - 15 speakers - 15 channels - Double-layer (aluminum) Nautilus tweeter - Continuum cone midrange driver - Carbon/cellulose cone woofer - Fresh Air - Mica cone subwoofer - Dirac Unison - Sound optimization - Room modes (Studio, Individual Stage, Jazz Club, Gothenburg Concert Hall))
- Glazing: Side and rear windows tinted (from B-pillar)

Brief expert findings

Documents submitted	At the time of the inspection, the registration certificate Part 2 (letter) was available, but the registration certificate Part 1 (certificate) was not. (Copy)
VIN comparison	The vehicle identification number (VIN) was read from the vehicle and its conformity with the submitted documents was verified during the inspection by the undersigned.
Inspection	The inspection conditions were sufficient for the assessment of the vehicle. Lifting equipment and a pit were available for examining the vehicle.
Test drive	No test drive/maneuvering was carried out during the inspection of the vehicle.
Engine function test	An engine test run was performed.
Driving readiness	The vehicle was drivable at the time of inspection.

Value reducing factors

No.	Component group	Description
1	Wing mirror - left side	Cap - Scratch(es) - Smart repair
2	Seat - front	Backrest cover - left side - Scratch(es) - Smart repair
3	Mudguard - right side	Mudguard - right side - Scratch(es) - Smart repair
4	Rear bumper	Rear bumper - Scratch(es) - Smart repair
5	Wheel / tyres	Alloy rim - rear left side - Scratch(es) - Loss in value
6	Wheel / tyres	Alloy rim - rear right side - Scratch(es) - Loss in value
7	Wheel / tyres	Alloy rim - front right side - Scratch(es) - Loss in value
8	Wheel / tyres	Alloy rim - front left side (Materialabtrag) - Scratch(es) - Loss in value
9	Side panel - rear left side	Side panel - Scratch(es) - Paint
10	Door - rear left side	Door - Scratch(es) - Paint
11	Front bumper	Front bumper - Scratch(es) - Paint
12	Door - front right side	Door - Scratch(es) - Paint
13	Side panel - rear right side	Side panel (+ Kratzer) - Paint defect - Repair and paint



Wear and tear

No.	Component group	Description
1	Body	Body (Waschstraßenkratzer) - Scratch(es) - No deduction
2	Bonnet	Bonnet - Stone chips - No deduction

The vehicle shows signs of wear commensurate with its age and use.

Missing parts

Description

Equipment - Tirefit complete

Interior - Boot cover / roller cover

Previous damages

No.	Previous damage	Extent of damage (Net)
1	Rear, Side right, Provided by user / customer, from 5 Apr 2023	1.627,54 €
2	Rear, Provided by user / customer, from 8 Aug 2023	2.562,11 €
3	Front, Provided by user / customer	

Repainting

No. Repainting

1 Side panel - rear right side, Unprofessionally carried out, Invoice of repair done Non-existent

Paint coat thickness measurement

Side panel - rear right side 195 µm |

Order/Scope of order

The order was placed to prepare a sales report for the vehicle described. This includes the following:

- Description of core relevant information about the vehicle
- Documentation of equipment features
(*Delivery by third-party service providers*)
- Documentation of damage, defects, missing parts
- Documentation of previous damage, unrepaired previous damage, repainting
- a brief visual or functional inspection of the equipment details if possible.
(*Functional tests of driver assistance systems are not included in the scope of services!*)
- a photo documentation of the vehicle



Basis for the order

This product is based on the Alphabet Fuhrpark GmbH guidelines for vehicle returns and valuations. The expert makes the explicit findings in each individual case objectively within the framework of the specified standards based on his or her own expertise.

The vehicle inspection takes place in a disassembled state.

Damage or defects that can only be detected during disassembly/diagnosis work or through advanced knowledge remain within the scope of the prognosis risk. An extended risk exists for concealed defects caused by fraudulent deception and not identifiable by the expert.

Damage or defects resulting from normal use or wear and tear of the vehicle will be accepted according to the applicable standard.

There was no explicit identification or monetary consideration of the expected features within the product.

Features which in their nature and severity slightly exceed normal use but do not constitute unacceptable damage will be documented and identified under signs of use if necessary.

Damage or defects which, according to the underlying standard, can no longer be attributed to normal use or wear and tear are listed in the product under "Depreciating Factors".

Depending on the product specification, a monetary ID can be provided. If this takes place, the costs can be 100% d or pro rata depending on the vehicle's age and mileage.

Previous damages

According to available information previous damages were repaired at the vehicle. Traces of repairs, which allow conclusions about the area of repair, were not recognizable during the inspection.

Comments

- Winterradsatz ist kein Bestandteil des Auslieferungsumfangs.



Figure 1: Diagonal front (left)



Figure 2: Diagonal front (right)



Figure 3: Diagonal rear (left)



Figure 4: Diagonal rear (right)



Figure 5: Interior - front



Figure 6: Interior - rear



Figure 7: Instrument cluster



Figure 8: Instrument panel



Figure 9: Interior 360° view



Figure 10: Cargo area



Figure 11: VIN



Figure 12: Mounted tyres



Figure 13: Documents

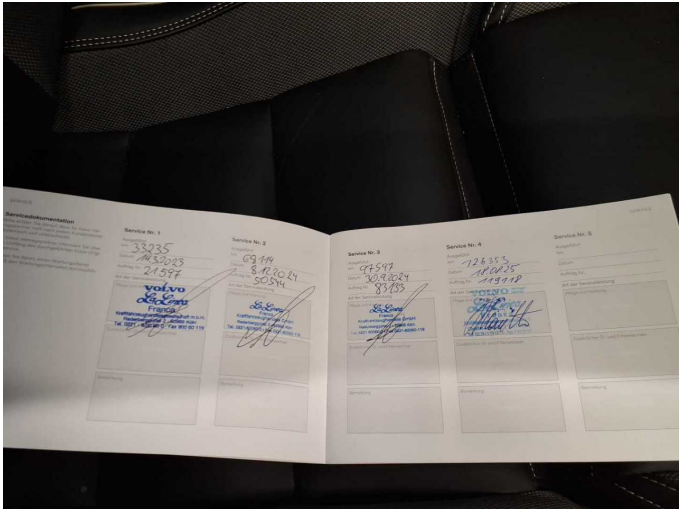


Figure 14: Documents



Figure 15: Additional tyres



Figure 16: Navigation



Figure 17: Misc.



Figure 18: Misc.

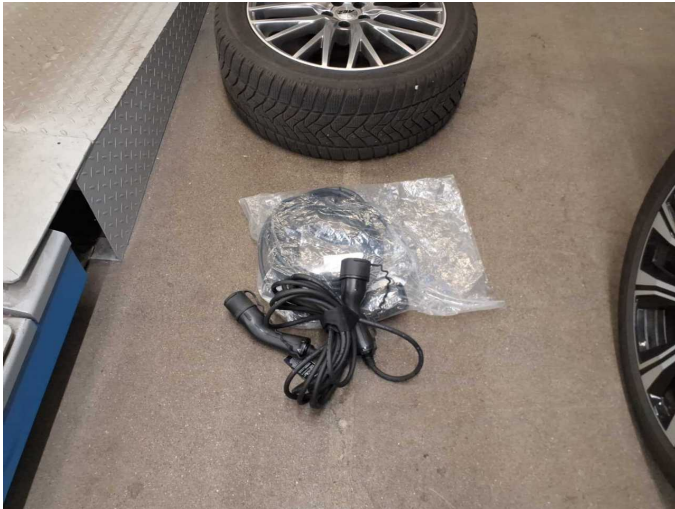


Figure 19: Misc.



Figure 20: Misc.



Figure 21: Misc.



Figure 22: Misc.



Figure 23: Misc.



Figure 24: Misc.



Figure 25: Misc.



Figure 26: Misc.

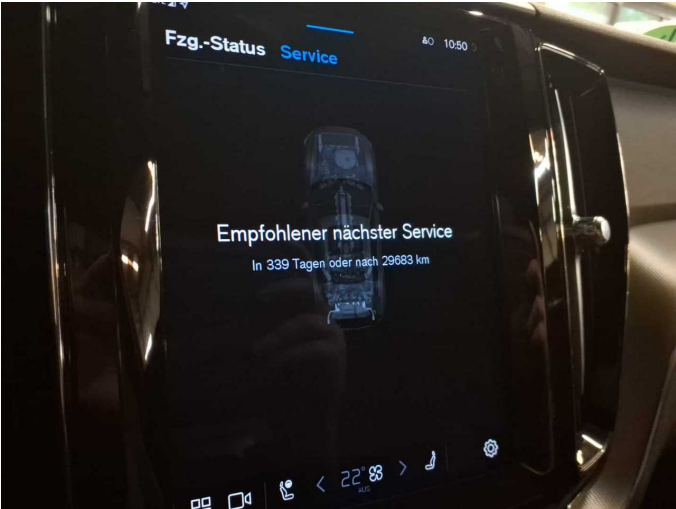


Figure 27: Misc.



Figure 28: Misc.

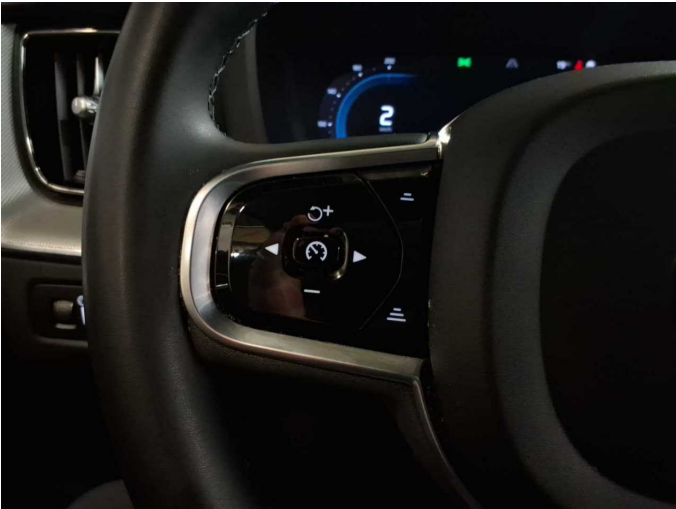


Figure 29: Misc.



Figure 30: Misc.



Figure 31: Misc.



Figure 32: Misc.



Figure 33: Misc.



Figure 34: Misc.



Figure 35: Misc.



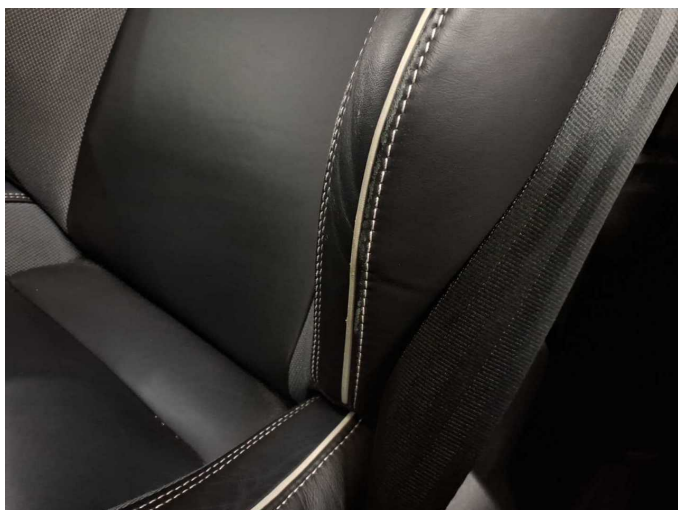
Damage 1: Wing mirror - left side: Cap - Scratch(es) - Smart repair



Damage 1: Wing mirror - left side: Cap - Scratch(es) - Smart repair



Damage 2: Seat - front: Backrest cover - left side - Scratch(es) - Smart repair



Damage 2: Seat - front: Backrest cover - left side - Scratch(es) - Smart repair



Damage 3: Mudguard - right side: Mudguard - right side - Scratch(es) - Smart repair



Damage 3: Mudguard - right side: Mudguard - right side - Scratch(es) - Smart repair



Damage 4: Rear bumper: Rear bumper - Scratch(es) - Smart repair



Damage 4: Rear bumper: Rear bumper - Scratch(es) - Smart repair



Damage 4: Rear bumper: Rear bumper - Scratch(es) - Smart repair



Damage 4: Rear bumper: Rear bumper - Scratch(es) - Smart repair



Damage 5: Wheel / tyres: Alloy rim - rear left side - Scratch(es) - Loss in value



Damage 5: Wheel / tyres: Alloy rim - rear left side - Scratch(es) - Loss in value



Damage 5: Wheel / tyres: Alloy rim - rear left side - Scratch(es) - Loss in value



Damage 6: Wheel / tyres: Alloy rim - rear right side - Scratch(es) - Loss in value



Damage 6: Wheel / tyres: Alloy rim - rear right side - Scratch(es) - Loss in value



Damage 7: Wheel / tyres: Alloy rim - front right side - Scratch(es) - Loss in value



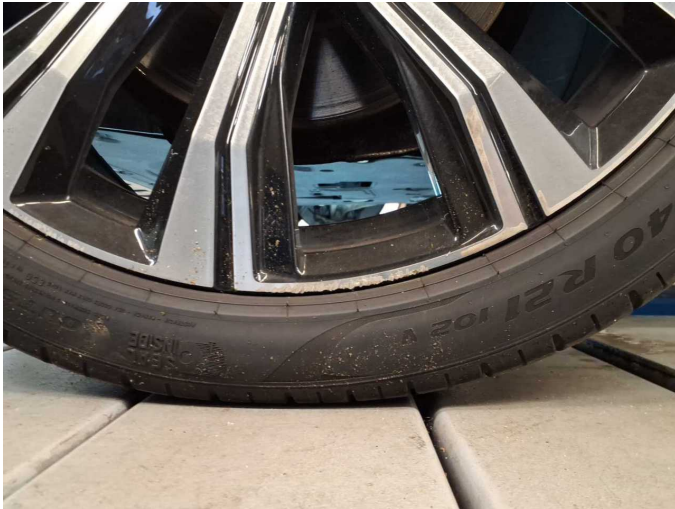
Damage 7: Wheel / tyres: Alloy rim - front right side - Scratch(es) - Loss in value



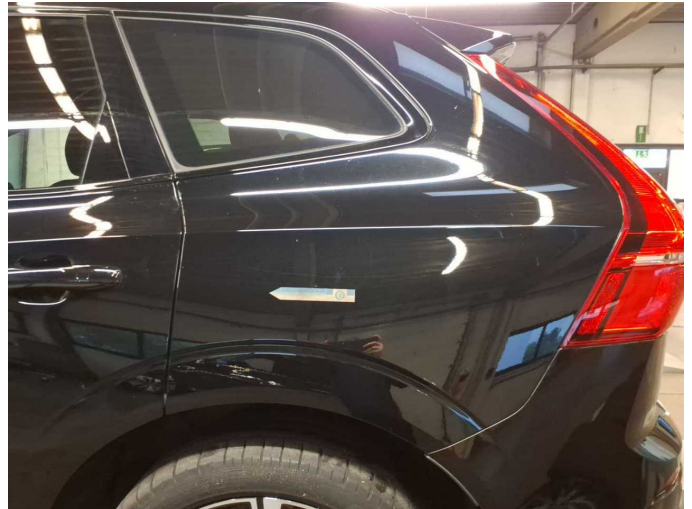
Damage 7: Wheel / tyres: Alloy rim - front right side - Scratch(es) - Loss in value



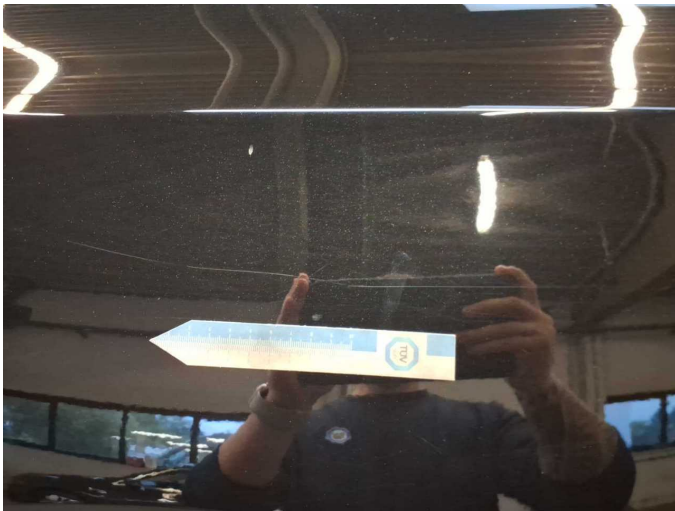
Damage 8: Wheel / tyres: Alloy rim - front left side (Materialabtrag) - Scratch(es) - Loss in value



Damage 8: Wheel / tyres: Alloy rim - front left side (Materialabtrag) - Scratch(es) - Loss in value



Damage 9: Side panel - rear left side: Side panel - Scratch(es) - Paint



Damage 9: Side panel - rear left side: Side panel - Scratch(es) - Paint



Damage 10: Door - rear left side: Door - Scratch(es) - Paint



Damage 10: Door - rear left side: Door - Scratch(es) - Paint



Damage 10: Door - rear left side: Door - Scratch(es) - Paint



Damage 10: Door - rear left side: Door - Scratch(es) - Paint



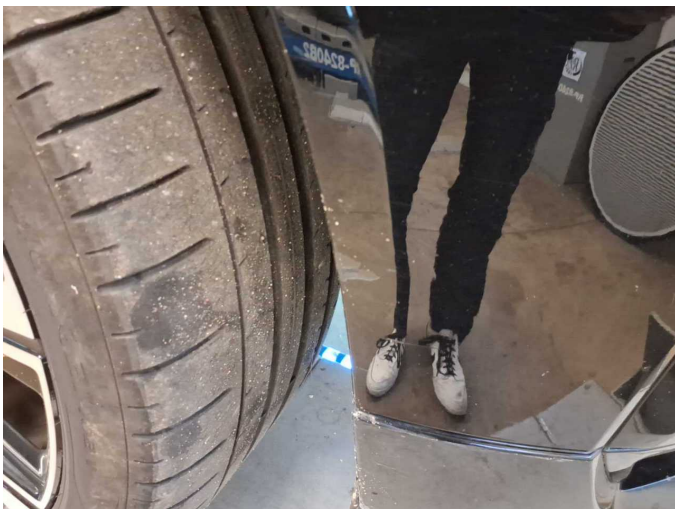
Damage 11: Front bumper: Front bumper - Scratch(es) - Paint



Damage 11: Front bumper: Front bumper - Scratch(es) - Paint



Damage 11: Front bumper: Front bumper - Scratch(es) - Paint



Damage 11: Front bumper: Front bumper - Scratch(es) - Paint



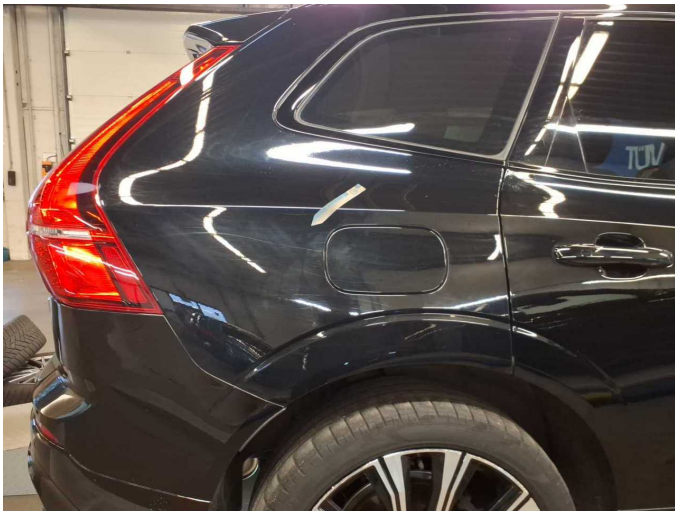
Damage 12: Door - front right side: Door - Scratch(es) - Paint



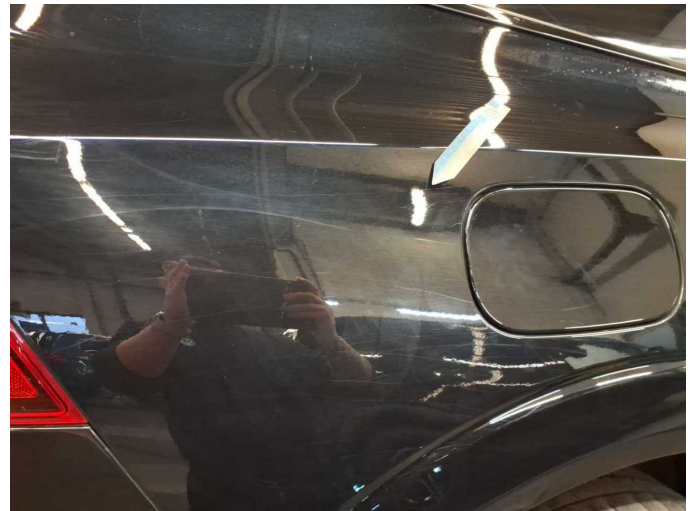
Damage 12: Door - front right side: Door - Scratch(es) - Paint



Damage 12: Door - front right side: Door - Scratch(es) - Paint



Damage 13: Side panel - rear right side: Side panel (+ Kratzer) - Paint defect - Repair and paint



Damage 13: Side panel - rear right side: Side panel (+ Kratzer) - Paint defect - Repair and paint



Damage 13: Side panel - rear right side: Side panel (+ Kratzer) - Paint defect - Repair and paint



Missing part 1: Equipment: Tirefit complete - Missing - Replace



Missing part 2: Interior: Boot cover / roller cover - Missing - Replace



Repainting 1: Side panel - rear right side



Repainting 1: Side panel - rear right side



Wartungshistorie

(gemäß Auftraggeber Informationen)

Fahrgestellnummer: LYVUZH1UDNB043417

Hersteller / Modell: VOLVO VOLVO XC60 T6 AWD Recharge Geartronic RDesign

Datum	KM-Stand	Beschreibung
19.08.2025	126.353	HU + AU; Motoröl b. Wartung; Ölfilter ern; Regelwartungsdienst; Wartung Sonstiges
30.09.2024	97.599	Motoröl b. Wartung; Ölfilter ern; Regelwartungsdienst; Wartung Sonstiges
15.12.2023	68.114	Bremsflüssigkeit; Bremsflüssigkeit ern; Luftfiltereinsatz ern; Motoröl b. Wartung; Ölfilter ern; Regelwartungsdienst; Reparatur Sonstiges; Wartung Sonstiges; Zündkerzen ern
16.03.2023	33.235	Motoröl b. Wartung; Ölfilter ern; Regelwartungsdienst; Wartung Sonstiges