



Expertise

Protocol number: 41600433  
Order No. / Reference: 25233331  
Inspection date: 18 Sept 2025

Manufacturer: Tesla

Model: Model Y RWD

VIN: LRWYGCF57PC056578



Vehicle details	
Manufacturer / Type / Model / Equipment	
Tesla Model Y RWD	
Vehicle Identification number	LRWYGCF57PC056578
Mileage (Read)	86,310 km
First registration	17 Aug 2023
Number of holders	1
Power / Engine displacement	88 kw /
Fuel type / Cylinder	Electric / 0
Gearbox / Number of gears	Direct drive / 1
Type of drive	Rear drive
Type of vehicle	SUV
Colour / colour code	Pearl White Multi-Coat
Doors / Seats	5 / 5
Upholstery type	Artificial leather
Colour of upholstery	Black
Vehicle with smoke odor	no



## Vehicle details

<b>Maintenance booklet / proof</b>	Non-existent	<b>Next maintenance in</b>	31,000 km
<b>Key is / should be</b>	2 / 2	<b>FZG documents</b>	ZB#2 (B) was available (copy), ZB#1 (S) was not available
		<b>Letter No.</b>	GY100010
<b>Previous damage / Accident</b>	Detectable	<b>Repainting</b>	None detectable
<b>Inspection conditions</b>	sufficient	<b>Lifting equipment / pit</b>	yes
<b>Test drive</b>	Not performed	<b>Engine function test</b>	Performed
<b>Manufacturer key number/ type code number</b>	1480 / ABB 00012		
<b>Emission standard</b>	2017/1151;WLTP;reine Elektrofz	<b>Fine dust sticker</b>	
<b>Permitted total weight</b>	2,448 kg	<b>Empty weight</b>	

## Tyres

### Mounted tyres

#	Tyre size	Type of tyre	Manufacturer	Tread depth
1)	255/45 R19 104V	Winter tyres on Light alloy	Goodyear	5mm / 5mm
2)	255/45 R19 104V	Winter tyres on Light alloy	Goodyear	5mm / 5mm

**Legend:** Tread depth information for tires on the left is in the first place, for tires on the right is in the second place on the axle in the direction of travel

## Equipment

### Standard equipment

- Airbags
- Anti-lock braking system (ABS)
- Electrically foldable exterior mirrors
- Electronic stability and traction control
- Front trunk for luggage
- Glass roof: Tinted glass roof
- Heated rear window
- Interior floor mats
- Rear headrests (3)
- Paint: Tesla multi-layer paint, Pearl White
- Music & media via Bluetooth
- Premium interior in black
- All-round view camera
- Wheels: Tire pressure monitoring system
- Power steering
- Seats: 2nd row with adjustable seat backs
- Seats: Separately folding rear seats (3)
- USB ports, front
- Central locking
- Alarm system: guard mode
- Autopilot
- Brake light, third
- Electric window lifter
- Gearbox: Single-speed gearbox with fixed gear
- Automatic tailgate
- Individual driver profiles
- Automatic air conditioning
- Front headrests (2)
- Centre console
- Over-the-air software updates
- Premium sound system (14 speakers)
- Wheels: 19-inch Gemini rims
- Keyless access
- Seat belts
- Seats: Heated front and rear seats
- Seats: Front seats with electric adjustment functions
- Immobiliser

### Extra equipment

- Trailer coupling (trailer coupling made of high-strength steel with removable ball head, towing capacity up to 1,600 kg)



## Brief expert findings

Documents submitted	At the time of the inspection, the registration certificate Part 2 (letter) was available, but the registration certificate Part 1 (certificate) was not. (Copy)
VIN comparison	The vehicle identification number (VIN) was read from the vehicle and its conformity with the submitted documents was verified during the inspection by the undersigned.
Inspection	The inspection conditions were sufficient for the assessment of the vehicle. Lifting equipment and a pit were available for examining the vehicle.
Test drive	No test drive/maneuvering was carried out during the inspection of the vehicle.
Engine function test	An engine test run was performed.

## Value reducing factors

No.	Component group	Description
1	Boot lid / rear door	Boot lid - Stone chips - Smart repair
2	Front bumper	Front bumper - Scratched - Paint
3	Door - rear left side	Door - Scratch(es) - Paint

## Wear and tear

No.	Component group	Description
1	Bonnet	Bonnet - Stone chips - No deduction
2	Interior	Interior - Soiled - No deduction
3	Vehicle glazing	Windscreen - Stone chips - No deduction

The vehicle shows signs of wear commensurate with its age and use.

## Missing parts

### Description

2nd wheel set - 2nd wheel set

## Previous damages

No.	Previous damage	Extent of damage (Net)
1	Rear, Provided by user / customer, from 20 Jan 2025	1.679,72 €

## Order/Scope of order

The order was placed to prepare a sales report for the vehicle described. This includes the following:

- Description of core relevant information about the vehicle
- Documentation of equipment features  
(Delivery by third-party service providers)
- Documentation of damage, defects, missing parts
- Documentation of previous damage, unrepaired previous damage, repainting
- a brief visual or functional inspection of the equipment details if possible.  
(Functional tests of driver assistance systems are not included in the scope of services!)
- a photo documentation of the vehicle



## Basis for the order

This product is based on the Alphabet Fuhrpark GmbH guidelines for vehicle returns and valuations. The expert makes the explicit findings in each individual case objectively within the framework of the specified standards based on his or her own expertise.

The vehicle inspection takes place in a disassembled state.

Damage or defects that can only be detected during disassembly/diagnosis work or through advanced knowledge remain within the scope of the prognosis risk. An extended risk exists for concealed defects caused by fraudulent deception and not identifiable by the expert.

Damage or defects resulting from normal use or wear and tear of the vehicle will be accepted according to the applicable standard.

There was no explicit identification or monetary consideration of the expected features within the product.

Features which in their nature and severity slightly exceed normal use but do not constitute unacceptable damage will be documented and identified under signs of use if necessary.

Damage or defects which, according to the underlying standard, can no longer be attributed to normal use or wear and tear are listed in the product under "Depreciating Factors".

Depending on the product specification, a monetary ID can be provided. If this takes place, the costs can be 100% d or pro rata depending on the vehicle's age and mileage.

## Previous damages

According to available information previous damages were repaired at the vehicle. Traces of repairs, which allow conclusions about the area of repair, were not recognizable during the inspection.

## Comments

- keine Serviceinfo

- Winterradsatz ist kein Bestandteil des Auslieferumfangs.





Figure 1: Diagonal front (left)



Figure 2: Diagonal front (right)



Figure 3: Diagonal rear (left)



Figure 4: Diagonal rear (right)



Figure 5: Interior - front



Figure 6: Interior - rear



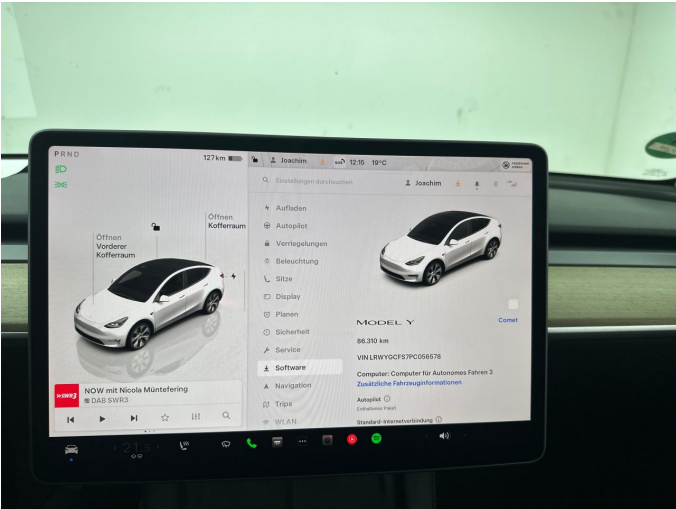


Figure 7: Instrument cluster



Figure 8: Instrument panel

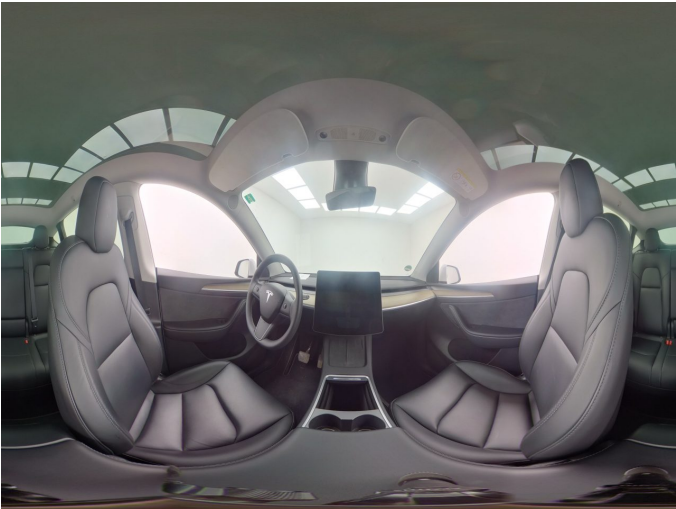


Figure 9: Interior 360° view



Figure 10: Cargo area



Figure 11: VIN



Figure 12: Mounted tyres

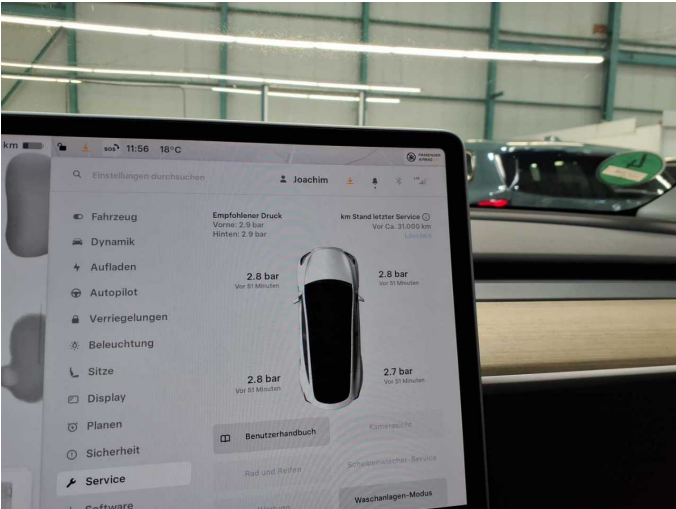


Figure 13: Documents



Figure 14: Documents

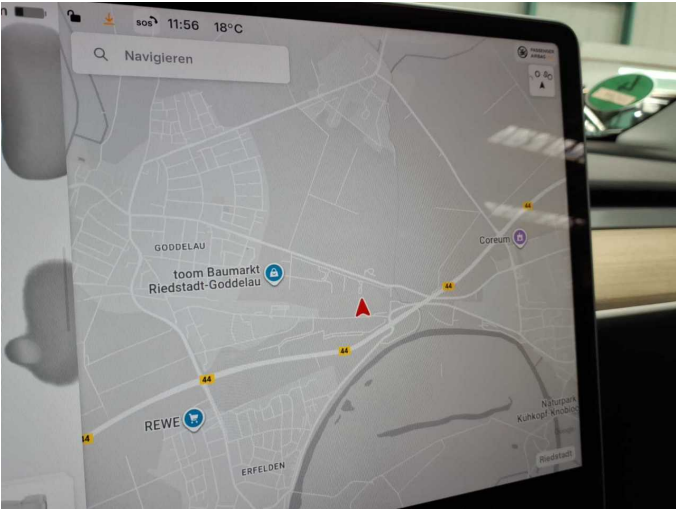


Figure 15: Navigation

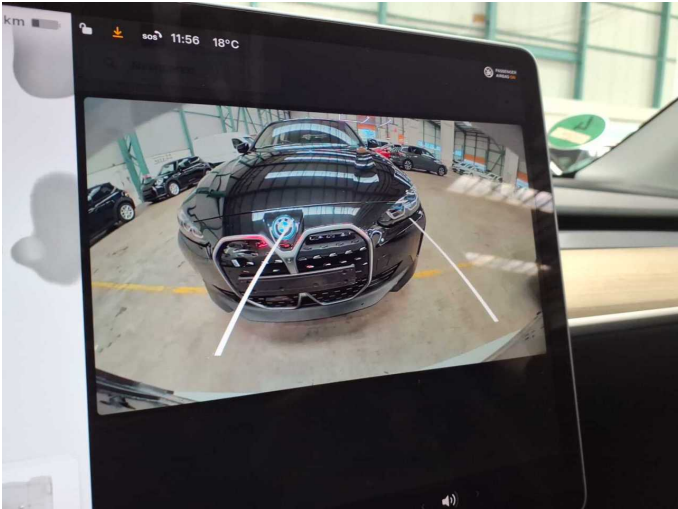


Figure 16: Misc.



Figure 17: Misc.

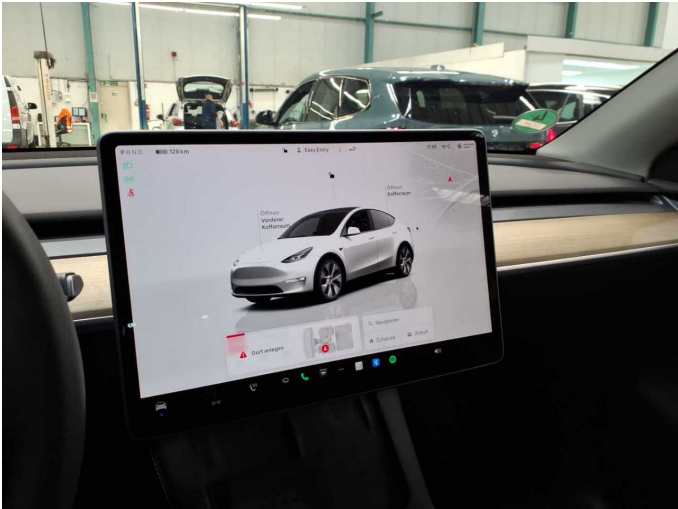


Figure 18: Misc.





Figure 19: Misc.



Figure 20: Misc.



Figure 21: Misc.



Figure 22: Misc.



Figure 23: Misc.



Figure 24: Misc.



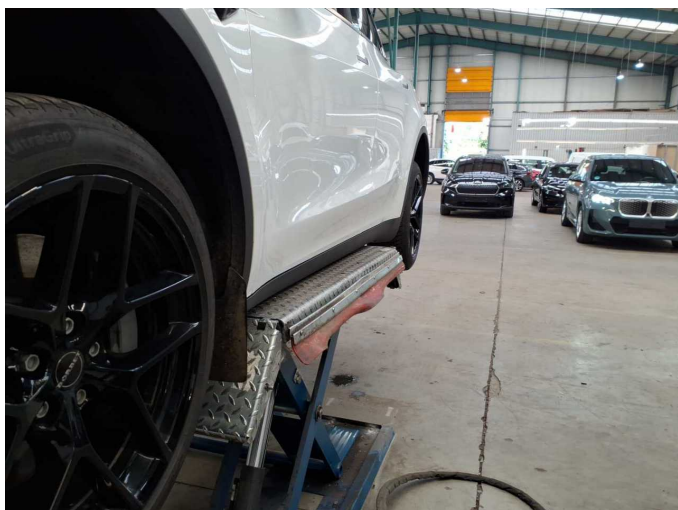


Figure 25: Misc.



Figure 26: Misc.



Damage 1: Boot lid / rear door: Boot lid - Stone chips - Smart repair



Damage 1: Boot lid / rear door: Boot lid - Stone chips - Smart repair



Damage 2: Front bumper: Front bumper - Scratched - Paint



Damage 2: Front bumper: Front bumper - Scratched - Paint



**Damage 3:** Door - rear left side: Door - Scratch(es) - Paint



**Damage 3:** Door - rear left side: Door - Scratch(es) - Paint