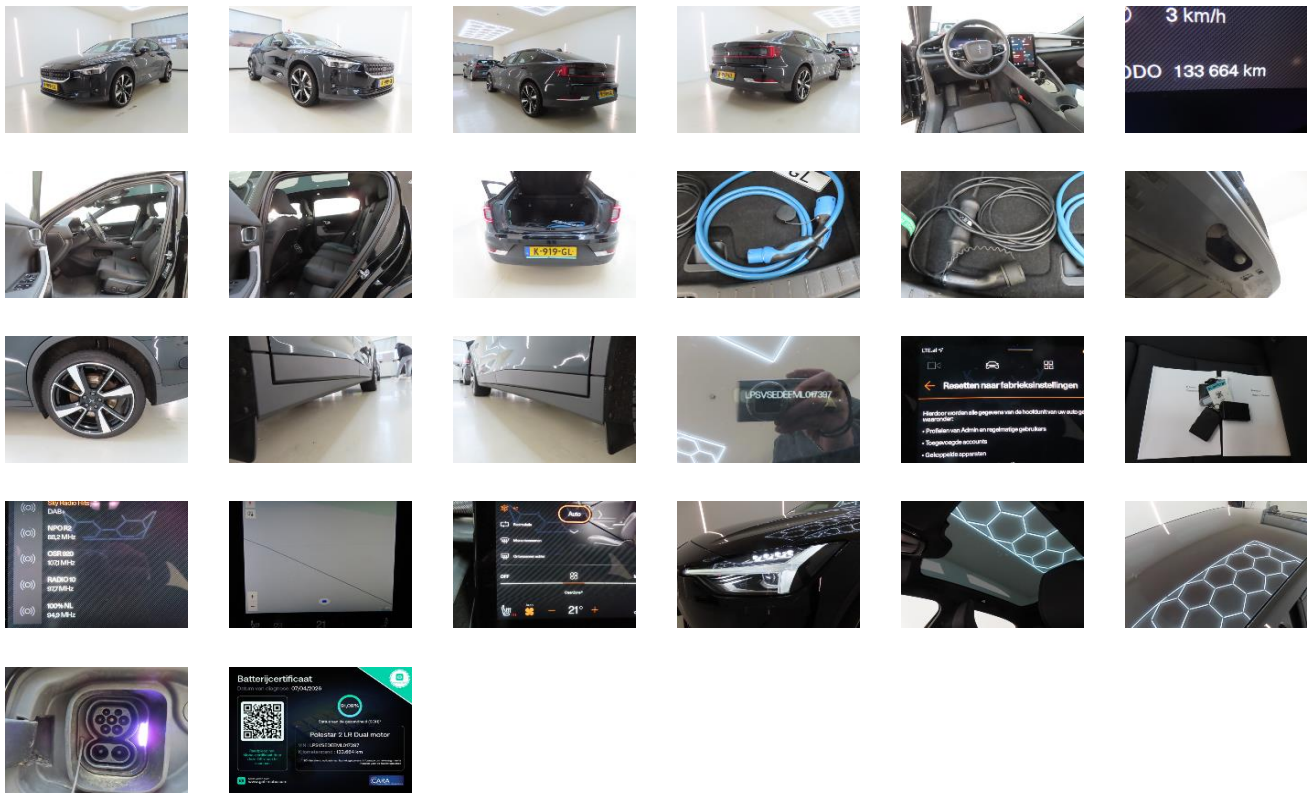


Vehicle details

VIN	LPSVSEDEE ML017397	Brand	Polestar	Maintenance date	-
Licence Plate	K9-19-GL	Model	Polestar 2 Pilot Plus 5d	Maintenance mileage	-
Registration date	21/12/2020	Year	2020	Exterior Color	Black Solid
Odometer	133 664 km	Engine size	-	interior Color	Grey
Fuel	Electric	Body Type	-	Next technical inspection	-
Seats	-	Transmission	Automatic	CO2	-
Doors	5	Gears	-		

Inspection Details

Inspection date	07/04/2026	Inspection loc.	Dekra Ayvens
-----------------	------------	-----------------	--------------



Generic equipment

Automated air-conditioning	✓
Cruise control	✓
GPS system	✓
Panoramic roof	✓
Alloy wheel rims	✓
Automatic Gearbox	✓
Heating seats	✓
Electric seats	✓
Tow	✓
Metallic paint	✓
Central locking	✓
Electric windows	✓
4x4	✓
Park Distance Control	✓
Audio System	✓
Led lighting	✓

Removable element

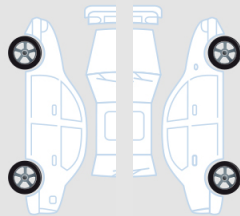
Rear parcel shelf	✓
Vehicle charger	✓
Wireless charger	✓

Technical Document

User manual	✓
Warranty booklet	✓
Spare key	✓
Remote key	✓

Tyres

Winter kit




Vredestein 245/40/20 Winter 6.5 mm






Vredestein 245/40/20 Winter 6.5 mm

Vredestein 245/40/20 Winter 6.5 mm

Vredestein 245/40/20 Winter 7.5 mm



Exterior

<p>1</p>  <p>● ●</p>	<table border="1"> <tr><td>Part</td><td>Alloy wheel 20"</td></tr> <tr><td>Position</td><td>Front left</td></tr> <tr><td>Damages</td><td>Scratched</td></tr> <tr><td>Severity</td><td>-</td></tr> <tr><td>Repair mode</td><td>Lumpsum repair</td></tr> </table>	Part	Alloy wheel 20"	Position	Front left	Damages	Scratched	Severity	-	Repair mode	Lumpsum repair	<p>2</p>  <p>● ●</p>	<table border="1"> <tr><td>Part</td><td>Alloy wheel 20"</td></tr> <tr><td>Position</td><td>Back left</td></tr> <tr><td>Damages</td><td>Scratched</td></tr> <tr><td>Severity</td><td>-</td></tr> <tr><td>Repair mode</td><td>Lumpsum repair</td></tr> </table>	Part	Alloy wheel 20"	Position	Back left	Damages	Scratched	Severity	-	Repair mode	Lumpsum repair
Part	Alloy wheel 20"																						
Position	Front left																						
Damages	Scratched																						
Severity	-																						
Repair mode	Lumpsum repair																						
Part	Alloy wheel 20"																						
Position	Back left																						
Damages	Scratched																						
Severity	-																						
Repair mode	Lumpsum repair																						
<p>3</p>  <p>● ●</p>	<table border="1"> <tr><td>Part</td><td>Alloy wheel 20"</td></tr> <tr><td>Position</td><td>Back right</td></tr> <tr><td>Damages</td><td>Scratched</td></tr> <tr><td>Severity</td><td>-</td></tr> <tr><td>Repair mode</td><td>Lumpsum repair</td></tr> </table>	Part	Alloy wheel 20"	Position	Back right	Damages	Scratched	Severity	-	Repair mode	Lumpsum repair	<p>4</p>  <p>● ● ●</p>	<table border="1"> <tr><td>Part</td><td>Door</td></tr> <tr><td>Position</td><td>Back right</td></tr> <tr><td>Damages</td><td>Dent & Chips</td></tr> <tr><td>Severity</td><td>Diameter (mm) > 20</td></tr> <tr><td>Repair mode</td><td>Repair</td></tr> </table>	Part	Door	Position	Back right	Damages	Dent & Chips	Severity	Diameter (mm) > 20	Repair mode	Repair
Part	Alloy wheel 20"																						
Position	Back right																						
Damages	Scratched																						
Severity	-																						
Repair mode	Lumpsum repair																						
Part	Door																						
Position	Back right																						
Damages	Dent & Chips																						
Severity	Diameter (mm) > 20																						
Repair mode	Repair																						
<p>5</p>  <p>● ●</p>	<table border="1"> <tr><td>Part</td><td>Bumper</td></tr> <tr><td>Position</td><td>Front</td></tr> <tr><td>Damages</td><td>Scratched</td></tr> <tr><td>Severity</td><td>-</td></tr> <tr><td>Repair mode</td><td>Repair</td></tr> </table>	Part	Bumper	Position	Front	Damages	Scratched	Severity	-	Repair mode	Repair												
Part	Bumper																						
Position	Front																						
Damages	Scratched																						
Severity	-																						
Repair mode	Repair																						