



# KIA Picanto

## Picanto 1.1

VIN NO KNABA24329T672489

Registration Number 329T672489



MOT Date

2027-03-01

Last Service



Number of Owners

4

Last Service Mileage



Number of Keys

2

First Registration Date

2009-01-26

Odometer Reading

111479 km

Country First Registered

Germany

### Inspection Report Summary

Customer	BCA Online	Report Number	P20251009113237
Inspection Date / Place	2025-10-09 / BCA Oberndorf	Cosmetic Grade	4

### Vehicle Summary

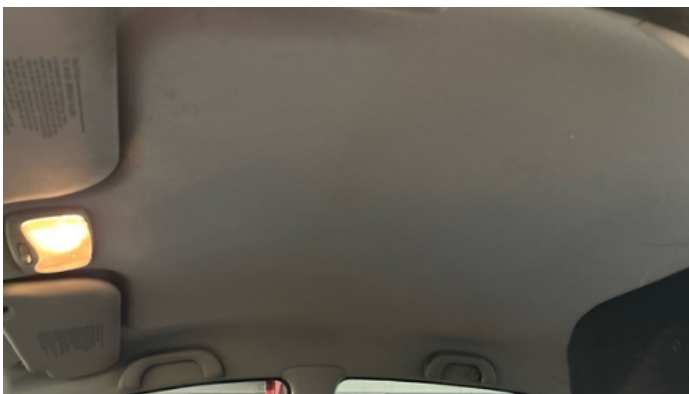
Vehicle Condition	Runner	VAT Type	Margin
Fuel Type	Petrol	Road Worthy	Yes
Colour	Red	Engine Size (cc)	1086
Engine Size	1.1	No of Doors	5
Body Type	Sedan	Drive Train	Front
Seat Colour		No of Seats	5
Seat Covering Name	Schwarz	Seat Covering	Cloth
Charging Cables		NEDC CO2 Rating (q/km)	118
Gearbox Type	Manual		

### Vehicle History & Documents

Service Book Available	Missing	Next Service Mileage	km
Previous Usage		Imported	No
Manufacturer Warrenty			









Equipment

Airbag Status	Anti-lock braking	Central locking	Radio
Alloys wheels	Auxiliary Socket	Leather steering wheel	

Equipment Details

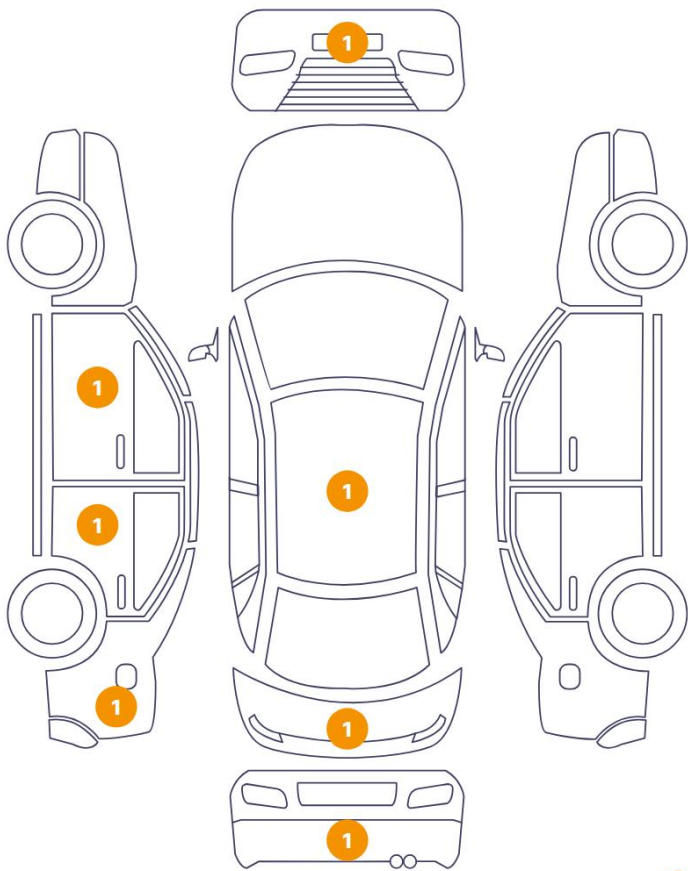
Air Conditioning	Yes	Alloy Wheel Size	14
Seat Heating	No		

Wheels & Tyres

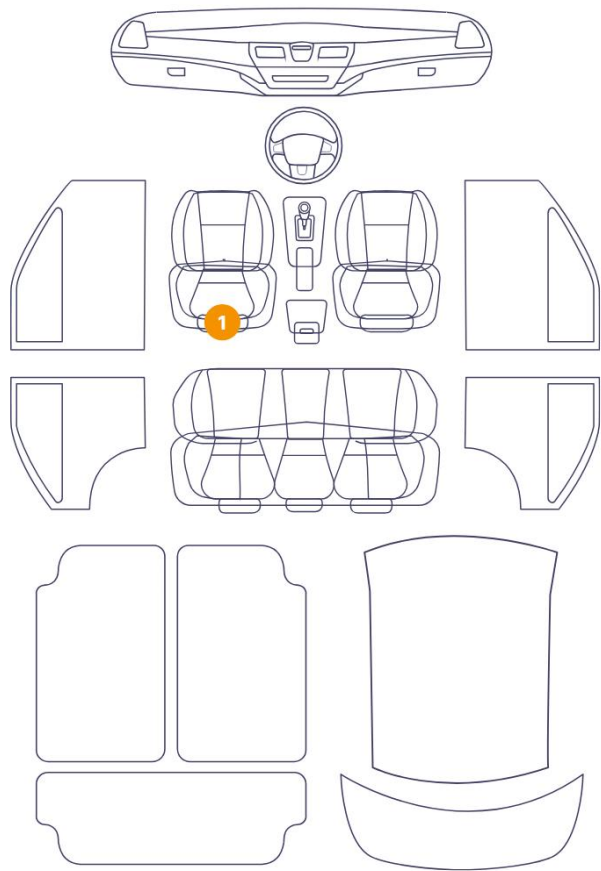
Right Rear Tyre Depth	6	Left Rear Tyre Depth	6
Right Front Tyre Depth	5	Left Front Tyre Depth	5

Cosmetic Damage

8 Schäden



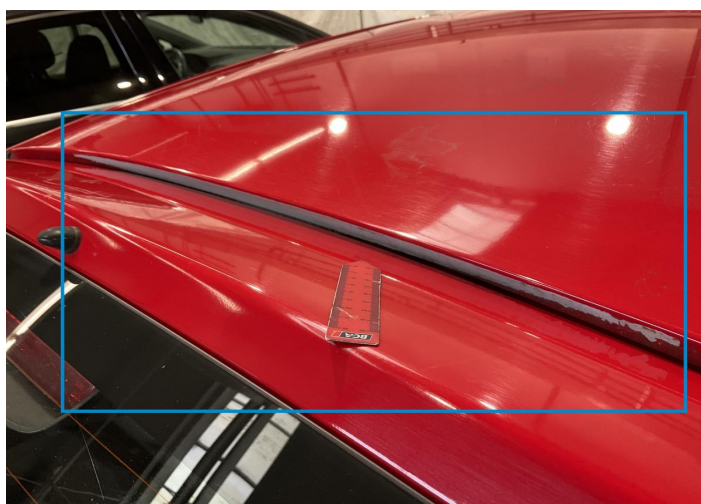
1 Schäden



48 1

Component		Damage	Comments
1	Roof	Paint / Scratch / Scuff	
2	Bumper / Front	Paint / Scratch / Scuff	
3	Other	Paint / Scratch / Scuff	
4	Mirror / Front Left	Paint / Scratch / Scuff	
5	Fender / Back Left	Bodywork / Dent / Dent	
6	Bumper / Back	Bodywork / Breakage / Crack	
7	Tailgate	Paint / Scratch / Scuff	
8	Door / Back Left	Paint / Scratch / Scuff	
9	Seat / Front Left	Interior / Ripped	





1. Roof  
Paint / Scratch / Scuff -



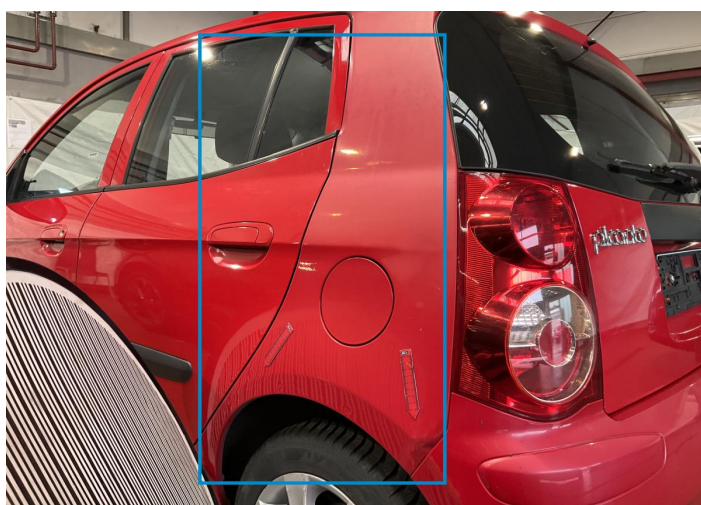
2. Bumper / Front  
Paint / Scratch / Scuff -



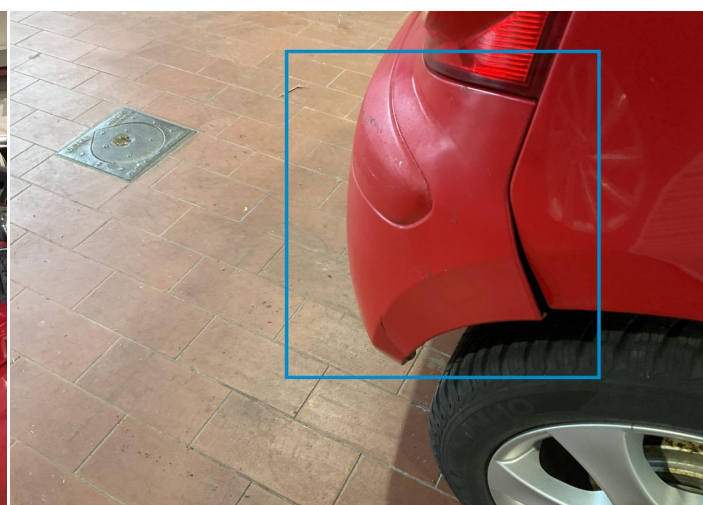
3.  
Paint / Scratch / Scuff -



4. Mirror / Front Left  
Paint / Scratch / Scuff -

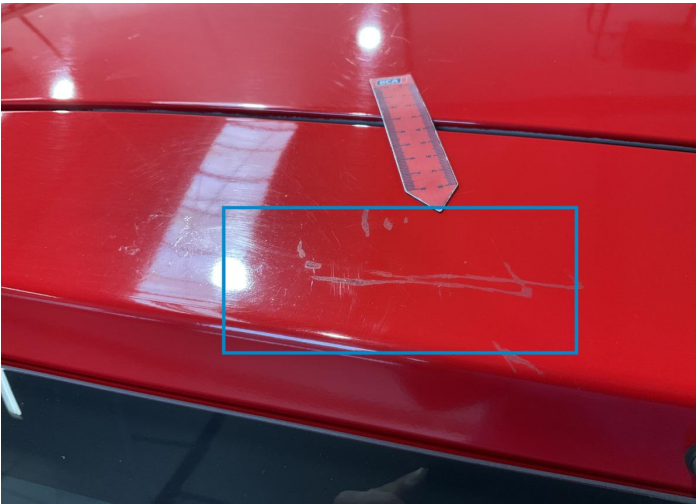


5. Fender / Back Left  
Bodywork / Dent / Dent -



6. Bumper / Back  
Bodywork / Breakage / Crack -

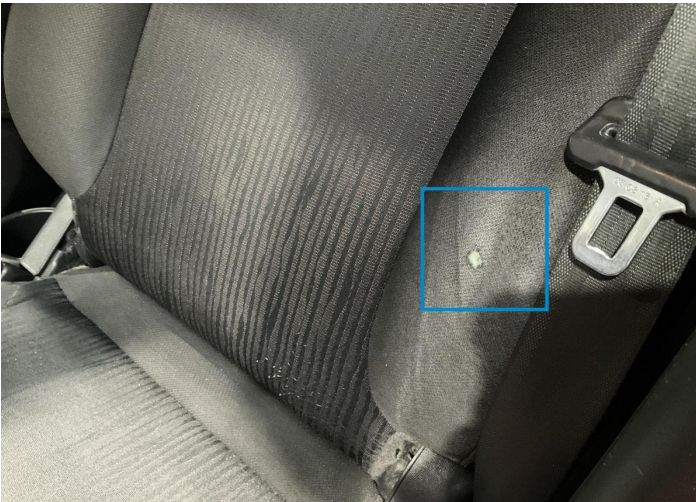




7. Tailgate  
Paint / Scratch / Scuff -



8. Door / Back Left  
Paint / Scratch / Scuff -



9. Seat / Front Left  
Interior / Ripped -



## Mechanical Condition

### Equipments Test

Central Locking	✓	Electric Windows	✓
Audio Equipment	✓	AC / Heating System	✓
Other Equipments	✓		

### Control Lights

ABS Warning Light	✓	Airbag Warning Light	✓
Oil Pressure Warning Light	✓	Brake Warning Light	✓
Power Steering Warning Light	✓	Alternator / Battery	✓
No Dashboard Lights	✓	Display Defect	✓
Service Light	✓		

### Engine

Engine Status / EML	✓	Engine Leak Visible	✓
Engine Starts	✓		

### Gearbox

Gear Box	✓
----------	---

### Levels





Brakes Fluid	✓	Coolant Fluid	✓
--------------	---	---------------	---

Test Drive Inspection

Steering Wheel

Steering | Noise / Anomaly 


Engine

Engine Noise		The Gears Scratch / Skip / Abnormal Operation	
Fume Quantity		Power Loss	

Brake





Brake System Anomaly 

Clutch

Clutch Functioning 

General

Test Driven Status      Not Performed

-  **No troubles detected, good condition or correct tests, according to vehicle age and mileage**
-  **Damages or malfunction detected that requires repairs by the buyer**
-  **Not applicable**
-  **Not tested**

Disclaimer

Please also note the "UserGuide condition report", which shows the scope of the vehicle description. [User Guide](#)