



HYUNDAI i30

i30 1.4

VIN NO KMHDB51CP8U103998
Registration Number CP8U103998



MOT Date	Number of Owners	Number of Keys	Odometer Reading
2026-05-01	2	2	238731 km
Last Service	Last Service Mileage	First Registration Date	Country First Registered
-	-	2009-01-09	Germany

Inspection Report Summary

Customer	BCA Online	Report Number	P20251006111833
Inspection Date / Place	2025-10-06 / SULOJA Brackel	Cosmetic Grade	4

Vehicle Summary

Vehicle Condition	Runner	VAT Type	Margin
Fuel Type	Petrol	Road Worthy	Yes
Colour	Red	Engine Size (cc)	1396
Engine Size	1.4	No of Doors	5
Body Type	Sedan	Drive Train	Front
Seat Colour		No of Seats	5
Seat Covering Name		Seat Covering	Cloth
Charging Cables		NEDC CO2 Rating (q/km)	142
Gearbox Type	Manual		

Vehicle History & Documents

Service Book Available	-	Next Service Mileage	km
Previous Usage		Imported	No
Manufacturer Warrenty			







Equipment

USB Socket	Anti-lock braking	Bluetooth telephone interface	Stability control
Radio	Airbag Status	Auxiliary Socket	Remote central locking
CD Player			

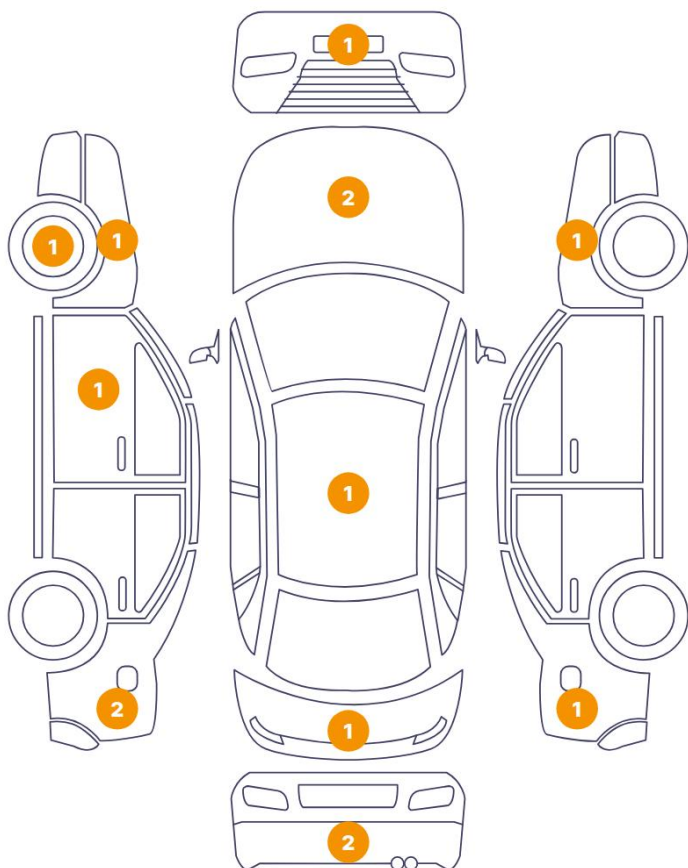
Equipment Details

Air Conditioning	Yes
------------------	-----

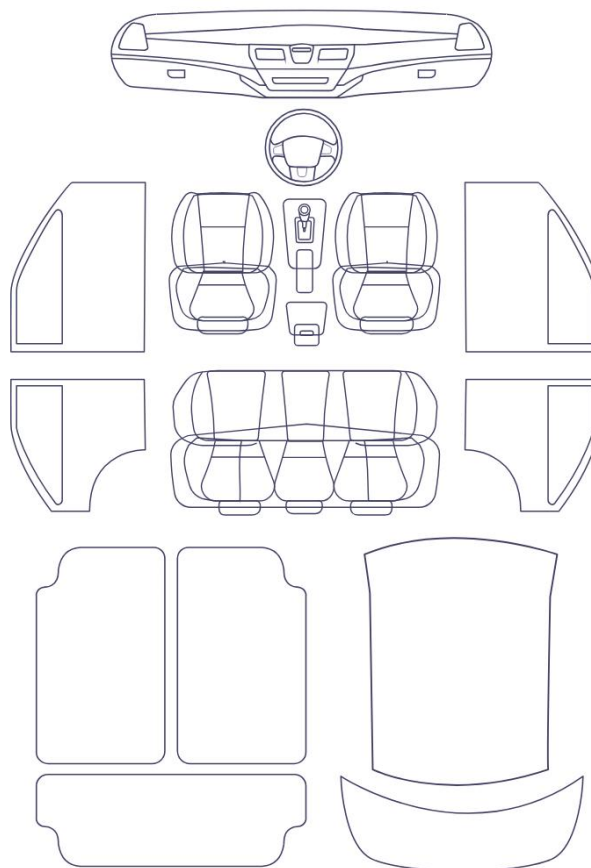
Wheels & Tyres

Right Front Tyre Depth	4	Left Front Tyre Depth	4
Right Rear Tyre Depth	5	Left Rear Tyre Depth	5

14 Schäden



Schäden

6/12 - Report Number P20251006111833

13	Roof	Bodywork / Dent / Hail Area
----	------	-----------------------------

14	Fender / Front Right	Paint / Scratch / Scuff
----	----------------------	-------------------------



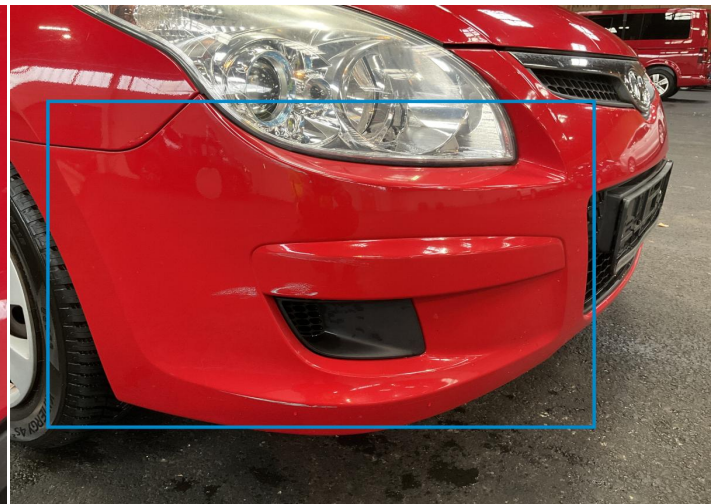
1. Side Panel / Back Left
Paint / Poor Previous Repair -



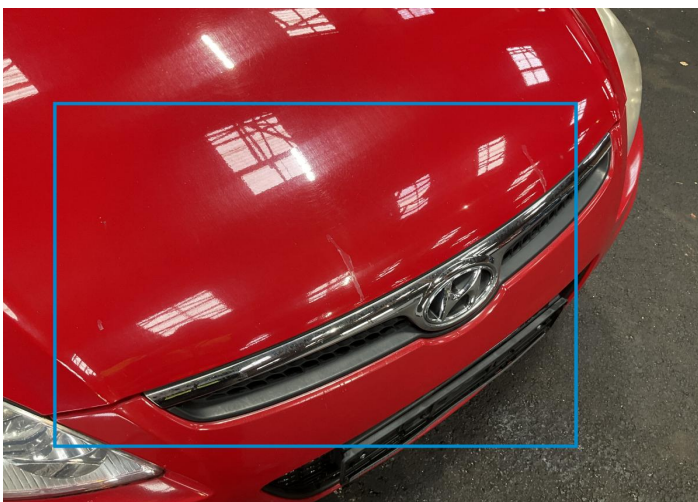
2. Tailgate
Paint / Poor Previous Repair -



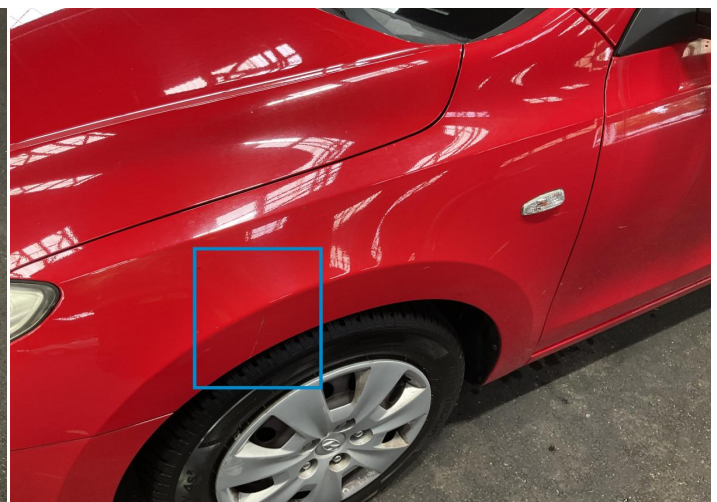
3. Side Panel / Back Right
Paint / Poor Previous Repair -



4. Bumper / Front
Paint / Scratch / Scuff -



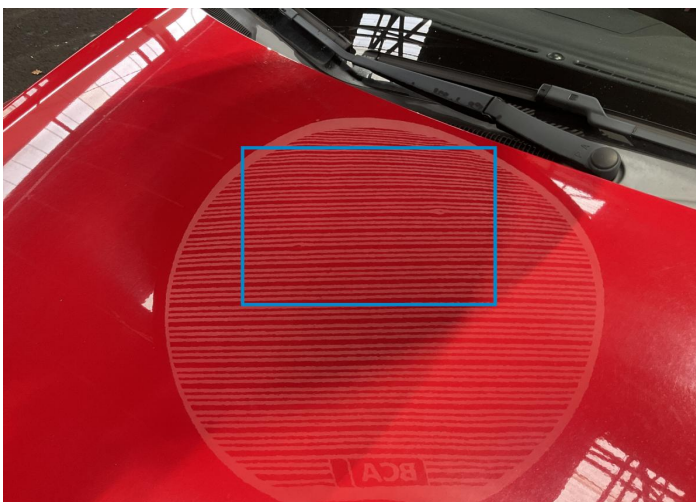
5. Hood
Paint / Poor Previous Repair -



6. Fender / Front Left
Paint / Scratch / Scuff -



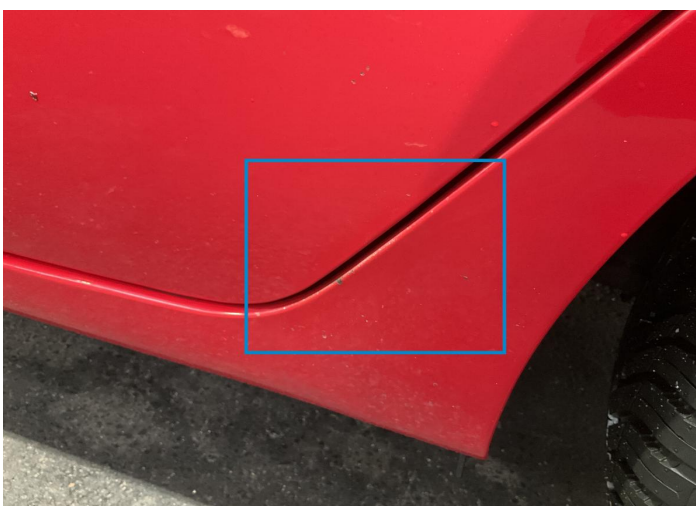
7. Hubcap / Front Left
Out of Bodywork / Scratch -



8. Hood
Bodywork / Dent / Dent -



9. Door / Front Left
Paint / Scratch / Scuff -



10. Side Panel / Back Left
Paint / Scratch / Scuff -



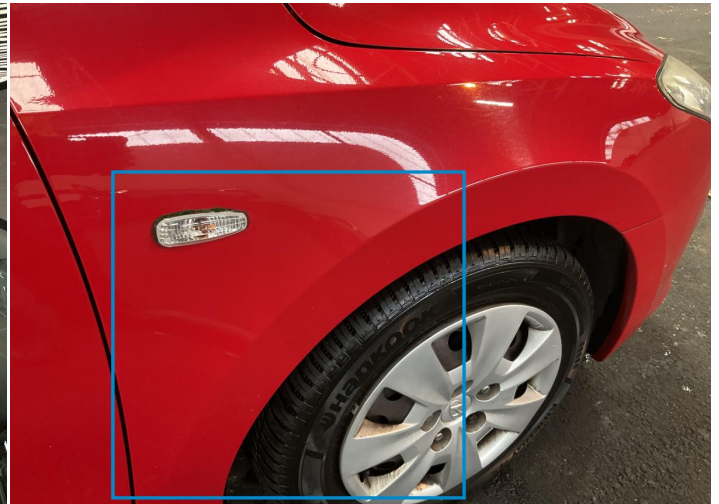
11. Bumper / Back
Paint / Scratch / Scuff -



12. Bumper / Back
Paint / Scratch / Scuff -



13. Roof
Bodywork / Dent / Hail Area -



14. Fender / Front Right
Paint / Scratch / Scuff -

Mechanical Condition

Control Lights

ABS Warning Light	✓	ESP Fault/Traction Control Malfunction Light	✓
Airbag Warning Light	✓	Oil Pressure Warning Light	✓
Brake Warning Light	✓	Power Steering Warning Light	✓
Alternator / Battery	✓	No Dashboard Lights	✓
Display Defect	✓	Tire Pressure Monitoring System	✓

Engine

Engine Status / EML	✓	Engine Leak Visible	✓
Engine Starts	✓		

Gearbox

Gear Box	✓
----------	---

Equipments Test

Electric Windows	✓	Audio Equipment	✓
AC / Heating System	✓	Main & Spare Keys Functioning	✓

Levels

Brakes Fluid	✓	Coolant Fluid	✓
--------------	---	---------------	---

Test Drive Inspection

Steering Wheel

Steering | Noise / Anomaly ✓

Engine

Engine Noise ✓ The Gears Scratch / Skip / Abnormal Operation ✓

Fume Quantity ✓ Power Loss ✓

Brake

Brake System Anomaly ✓

Clutch

Clutch Functioning ✓

General

Test Driven Status ✓

- ✓ No troubles detected, good condition or correct tests, according to vehicle age and mileage
- ! Damages or malfunction detected that requires repairs by the buyer
- NA Not applicable
- ☐ Not tested

Disclaimer

Please also note the "UserGuide condition report", which shows the scope of the vehicle description. [User Guide](#)