



MAZDA CX-5

CX-5 SKYACTIV-G 194 Aut. AWD

VIN NO JMZKFGWMA00842629
Registration Number MA00842629



MOT Date	Number of Owners	Number of Keys	Odometer Reading
2026-07-01	1	2	47501 km
Last Service	Last Service Mileage	First Registration Date	Country First Registered
-	-	2019-05-23	Germany

Inspection Report Summary

Customer	BCA Online	Report Number	P20250926083509
Inspection Date / Place	2025-09-26 / SULOJA Mönchengladbach	Cosmetic Grade	4

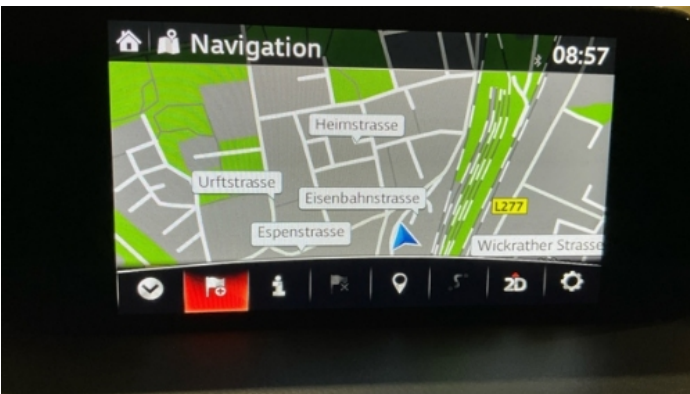
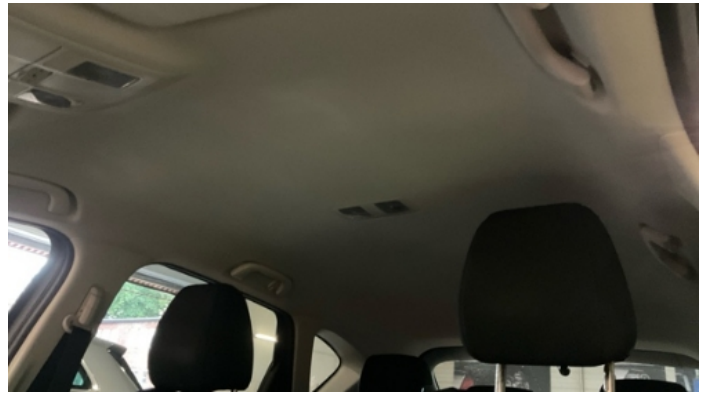
Vehicle Summary

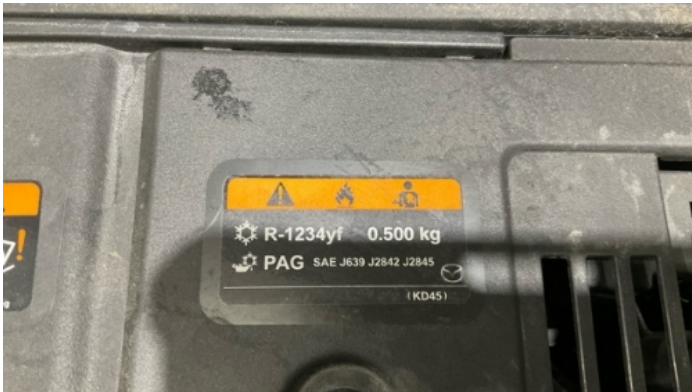
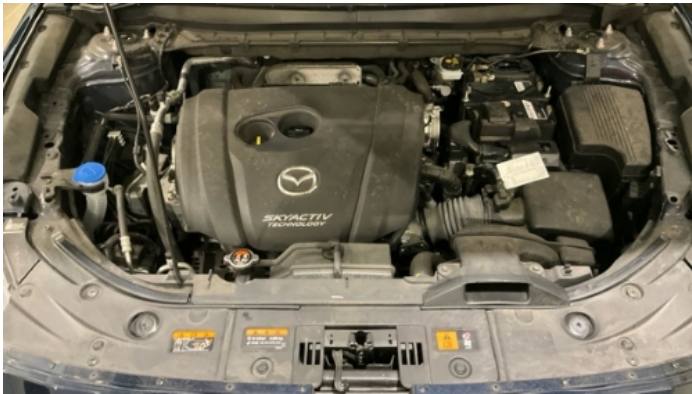
Vehicle Condition	Runner	VAT Type	Margin
Fuel Type	Petrol	Road Worthy	Yes
Colour	Blue	Engine Size (cc)	2488
Engine Size	2.5	No of Doors	5
Body Type	SUV	Drive Train	All-Wheel-Drive permanent
Seat Colour		No of Seats	5
Seat Covering Name		Seat Covering	Cloth
Charging Cables		NEDC CO2 Rating (q/km)	169
Gearbox Type	Automatic		

Vehicle History & Documents

Service Book Available	Missing	Next Service Mileage	km
Previous Usage		Imported	No
Manufacturer Warrenty			







Equipment

Tinted Glass	360°camera	Alloys wheels	AppleCarPlay
Bluetooth telephone interface	Digital Radio	Front fog lamps	Head up Display
Remote central locking	Roof rails	Stability control	Distancewarningsystem
Electrictailgate	Leather steering wheel	Rain sensitive windscreen wipers	USB Socket
Airbag Status	Anti-lock braking	Auxiliary Socket	Cruise control
Enhanced speaker system	Front parking sensors	Remote adjusting wing mirrors	Reversing Camera
Satellite navigation	Central locking	Electrically folding wing mirrors	Laneassist
LED Headlamps	Rear parking sensors		

Equipment Details

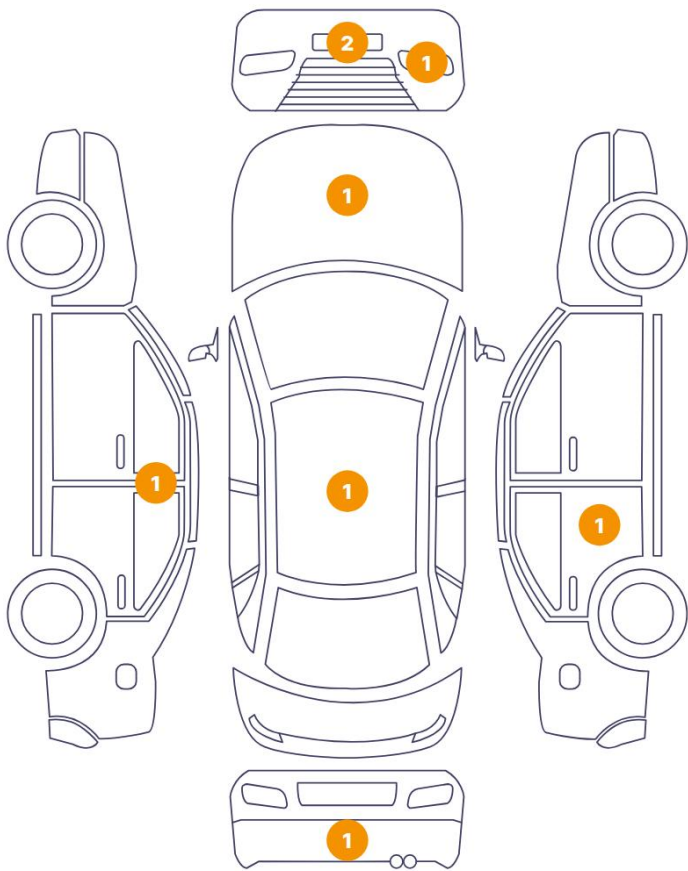
Air Conditioning	Yes	Alloy Wheel Size	17
Enhanced Speaker System	BOSE	Seat Heating	Front

Wheels & Tyres

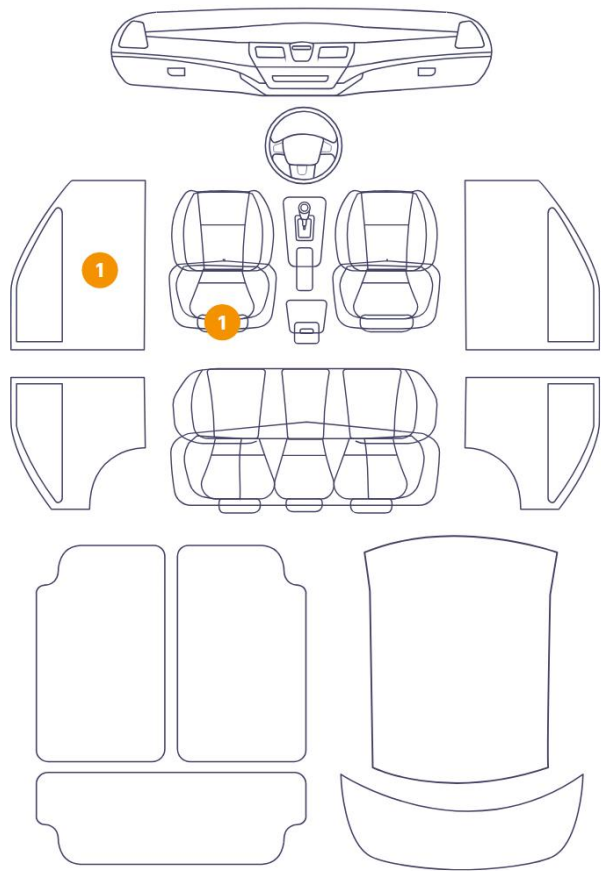
Right Front Tyre Depth	4	Left Front Tyre Depth	4
Right Rear Tyre Depth	5	Left Rear Tyre Depth	5

Cosmetic Damage

8 Schäden



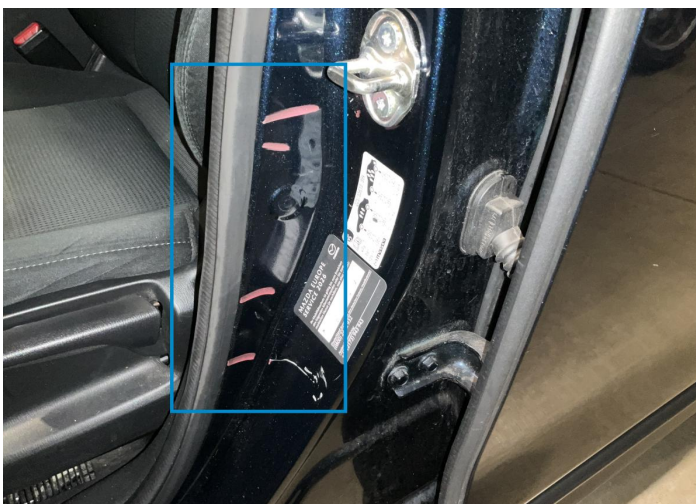
2 Schäden



Component		Damage	Comments
1	Corner Bumper / Front Left	Bodywork / Dent / Dent	
2	B Pillar / Center Left	Bodywork / Dent / Dent	
3	Backrest Cover / Front Left	Interior / Scratched	
4	Panel Filling / Front Left	Interior / Scratched	
5	Bumper / Back	Paint / Scratch / Scuff	
6	Door / Back Right	Paint / Scratch / Scuff	
7	Roof	Bodywork / Dent / Dent	
8	Blade/spoiler / Front	Bodywork / Dent / Dent	
9	Hood	Paint / Stone Chip	
10	Front Light / Front Right	Glass Break	



1. Corner Bumper / Front Left
Bodywork / Dent / Dent -



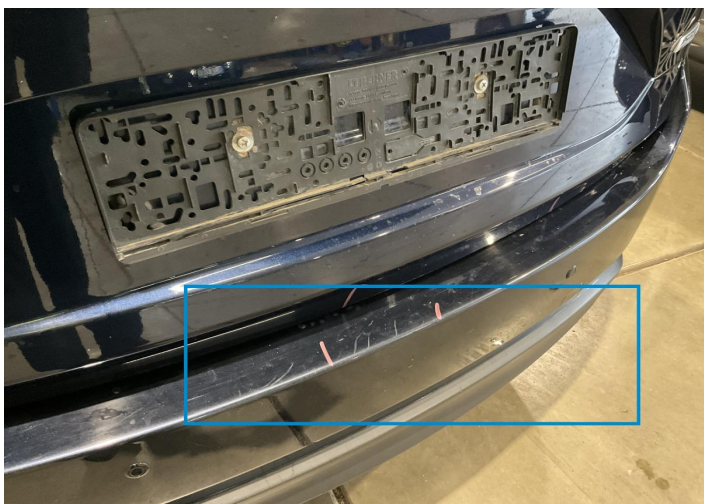
2. B Pillar / Center Left
Bodywork / Dent / Dent -



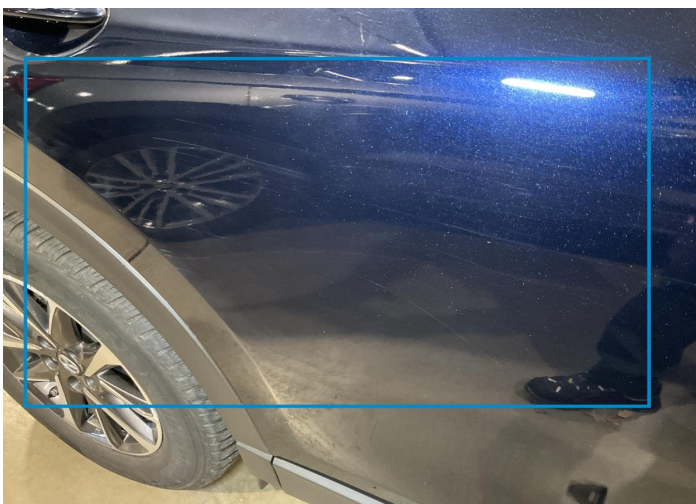
3. Backrest Cover / Front Left
Interior / Scratched -



4. Panel Filling / Front Left
Interior / Scratched -



5. Bumper / Back
Paint / Scratch / Scuff -



6. Door / Back Right
Paint / Scratch / Scuff -



7. Roof
Bodywork / Dent / Dent -



8. Blade/spoiler / Front
Bodywork / Dent / Dent -



9. Hood
Paint / Stone Chip -



10. Front Light / Front Right
Glass Break -

Mechanical Condition

Control Lights

ABS Warning Light	✓	ESP Fault/Traction Control Malfunction Light	✓
Airbag Warning Light	✓	Oil Pressure Warning Light	✓
Brake Warning Light	✓	Power Steering Warning Light	✓
Alternator / Battery	✓	No Dashboard Lights	✓
Display Defect	✓	Service Light	✓

Engine

Engine Status / EML	✓	Engine Leak Visible	✓
Engine Starts	✓		

Gearbox

Gear Box	✓
----------	---

Levels

Brakes Fluid	✓	Coolant Fluid	✓
--------------	---	---------------	---

Equipments Test

Central Locking	✓	Main & Spare Keys Functioning	✓
Electric Windows	✓	Navigation System	✓
Audio Equipment	✓	Parking Sensors / Cameras Functioning	✓
AC / Heating System	NA	Other Equipments	✓

Test Drive Inspection

Engine			
Engine Noise	✓	The Gears Scratch / Skip / Abnormal Operation	✓
Fume Quantity	✓	Power Loss	✓
Brake			
Brake System Anomaly	✓		
Steering Wheel			
Steering Noise / Anomaly	✓		
General			
Test Driven Status	Not Performed		
✓	No troubles detected, good condition or correct tests, according to vehicle age and mileage		
!	Damages or malfunction detected that requires repairs by the buyer		
NA	Not applicable		
☐	Not tested		

Disclaimer

Please also note the "UserGuide condition report", which shows the scope of the vehicle description.

[User Guide](#)