



Hüsge Gruppe®  
Die Gutachter

## status report

customer: Santander Consumer Leasing GmbH

reference:

### vehicle data

#### Mazda CX-5 Ad'vantage AWD

Vehicle identification number	JMZKFGW7A90271610	mileage read:	25818 km
First Registration / construction year:	23.08.2022 / 2022	Visit Date / place of birth:	09.05.2025 Hoppegarten
Bodywork:	cars	Re - import:	unknown
Body type:	hatchback	KBA no. :	7118//AHQ
Fuel / emission class:	gasoline / € 6	transmission type:	automatic
Displacement / power:	1998 ccm / 121 kW (165 PS)	Engine:	four-wheel
paint:	Deep Crystal Blue	Number of previous owners:	1
Doors / seats:	5 / 5	number keys:	2
Next HU / AU:	- / -	cushion type:	substance
Service book available:	no	Interior Color:	black
smoking vehicle:	no	Last service km / on the:	- / -
Vehicle roadworthy:	yes	Vehicle roadworthy:	yes
Submitted vehicle	Eg II ( veh - letter )	state outside:	3 - Average
documents:			
visit condition:	-	condition inside:	2 - Good
state general:	3 - Average		

### Accessories (presented to the visiting time )

GPS sat nav disk:	Fzg.Schlüssel:	Service book provided / maintained:	Last service at / on:
SD Card	2	no / -	- / -
<input checked="" type="checkbox"/> Fernbed . Auxiliary heating	<input checked="" type="checkbox"/> partition net	<input checked="" type="checkbox"/> Wind Deflector	<input checked="" type="checkbox"/> AHK fixed
<input checked="" type="checkbox"/> AHK removable	<input checked="" type="checkbox"/> AHK swivel	<input checked="" type="checkbox"/> AHK key	<input checked="" type="checkbox"/> Fernbed . entertainment
<input checked="" type="checkbox"/> headphone	<input checked="" type="checkbox"/> Load compartment cover	<input checked="" type="checkbox"/> LED headlights	<input checked="" type="checkbox"/> navigation system
<input checked="" type="checkbox"/> Persenning	<input checked="" type="checkbox"/> Xenon headlights		

☒ available

☒ not available

Hüsges GmbH  
Gießerallee 23  
47877 Willich  
Tel.: 02154 / 9534 0  
E-Mail: gutachten@huesges-group.eu

The status report was created impartially and to the best of my knowledge. The images listed in the status report are part of the vehicle description regarding the equipment and the vehicle condition.



Hüsges Gruppe®  
**Die Gutachter**



mounted tires		
Tyre / wheel type:	<b>summer tires</b>	<b>aluminum</b>
1st axis - Left / states .	<b>Toyo</b>	<b>225/55/R19/99V 6 mm</b>
1st axis - right / states .	<b>Toyo</b>	<b>225/55/R19/99V 6 mm</b>
2nd axis - Left / states .	<b>Toyo</b>	<b>225/55/R19/99V 6 mm</b>
2nd axis - right / states .	<b>Toyo</b>	<b>225/55/R19/99V 6 mm</b>
traffic Safety:	<b>roadworthy</b>	
spare wheel:	<b>Tirefit</b>	
state spare wheel:	<b>-</b>	

standard equipment	
<ul style="list-style-type: none"> <li>• 3rd brake light</li> <li>• Exhaust system 2-flow</li> <li>• Airbag driver / passenger side</li> <li>• Anti-Blockier-System (ABS)</li> <li>• Around View Monitor (360 ° surrounding view)</li> <li>• Audio system Radio with CD Player</li> <li>• Outside mirror electr. adjustable and heated, both</li> <li>• Indicator integrated into mirrors</li> <li>• Roof spoiler body color</li> <li>• Dynamic Stability Control (DSC)</li> <li>• Park distance control front and rear</li> <li>• Electr. Brake force distribution</li> <li>• Auspark Wizard</li> <li>• Driving Assistance System City Emergency Braking Plus , backwards ( SCBS R )</li> <li>• Driving Assistance System High-beam assistant</li> <li>• Vehicle assistance system emergency braking assistant</li> <li>• Driving Assistance System Lane Change Assist Plus ( BSM )</li> <li>• Electric window . front and rear with rear comfort control</li> <li>• Speed control system (cruise control)</li> <li>• Outside belt tensioner at the rear</li> <li>• Illuminated glove compartment</li> <li>• Tailgate / cover electr. pressed (open + close)</li> <li>• Interior mirror with automatic dimming</li> <li>• Isofix seats for child seat</li> <li>• License plate light LED</li> <li>• Head and shoulders airbag , front and rear</li> <li>• Lumbar support front left seat</li> </ul>	<ul style="list-style-type: none"> <li>• 6 speakers</li> <li>• Active Info-Display (Instrumentenanzeige digital)</li> <li>• Air bag system passenger side can be switched off</li> <li>• Drive all-wheel drive</li> <li>• Audio control on the steering wheel</li> <li>• Power side mirrors . anklappbar</li> <li>• Exterior mirror painted</li> <li>• Brake energy recovery i-ELOOP</li> <li>• Anti-theft alarm system with interior surveillance</li> <li>• Dynamic cornering light (AFS)</li> <li>• Automatic switch-on for driving lights</li> <li>• </li> <li>• Fahrassistenz-Berganfahrhilfe System</li> <li>• Driver assistance system Vehicle dynamics control G-Vectoring Control</li> <li>• Fatigue detection sensor ( DAA )</li> <li>• Driver assistance system Lane Keeping Assist</li> <li>• </li> <li>• Handsfree with voice control and Bluetooth</li> <li>• Automatic transmission - ( 6-speed )</li> <li>• Belt tensioner front</li> <li>• </li> <li>• Induction charging cradle for smartphone (wireless charging)</li> <li>• Internet based services</li> <li>• Body 5-door</li> <li>• Climate</li> <li>• LCD color display in the round instrument</li> <li>• Steering wheel (sports / leather, 3-spoke)</li> <li>• Steering column ( steering wheel ) Mech . Height / length adjustment</li> </ul>

<ul style="list-style-type: none"> <li>• Steering wheel heated</li> <li>• Reading light front</li> <li>• LM rims</li> <li>• Rear center armrest</li> <li>• Engine 2.0 ltr. - 121 kW KAT</li> <li>• Multi - information display ( color)</li> <li>• fog lights LED</li> <li>• Electric parking brake</li> <li>• Wheelbase 2700 mm</li> <li>• Rear View Camera</li> <li>• Low emissions according to Euro 6d emission standard</li> <li>• Rain-sensing wipers</li> <li>• Headlight LED</li> <li>• Side airbag in front</li> <li>• Seat cover / upholstery fabric</li> <li>• heated seats in the front</li> <li>• Voice control, extended scope</li> <li>• Start / Stop System ( i -stop )</li> <li>• Touchscreen color display (10.25 inch)</li> <li>• USB port on the back</li> <li>• Immobilizer (electronic)</li> <li>• Central locking with remote control</li> </ul>	<ul style="list-style-type: none"> <li>• Lichtassistent (Coming Home, Leaving Home)</li> <li>• Lighted make- up mirror</li> <li>• Model maintenance (2)</li> <li>• Multi-Commander</li> <li>• Navigation System SD card navigation</li> <li>• Emergency Brake Warning Light (ESS)</li> <li>• Digital radio reception (DAB +)</li> <li>• Tire pressure monitoring system</li> <li>• Rear seat backrest split / folding</li> <li>• Shift / selector lever handle leather</li> <li>• Windscreen wiper decker front</li> <li>• Headlight cleaning system (SRA )</li> <li>• Darkened rear side windows and rear windscreen</li> <li>• Front seats height adjustable</li> <li>• Social Media Integration (Online Services / Apps)</li> <li>• Start-Stop-Knopf</li> <li>• Daytime running lights</li> <li>• Door handles outside body color</li> <li>• USB port and AUX - IN connection</li> <li>• Tinted heat insulating glass</li> <li>• Cylinder deactivation</li> </ul>
---	--

special Features	
• Metallic-Lackierung	

We remind you that the data provided were taken from the DAT database.\n\nNo liability can be assumed for the completeness and correctness.

General examination	
<b>Subfloor Inspection:</b>	<b>Conducted limited</b> To investigate the vehicle (ä . Lift o . ) Were not lifting means even a ramp or pit available. For this reason, a visit to the vehicle's underside was limited.
<b>Mileage plausible:</b>	<b>not testable</b> not testable
<b>reference:</b>	
<b>Note Road Safe:</b>	

**Farbabweichung Plastikteile**

**Accident injury assessment**

**Rep. Predamages / -height gross:** **no detectable**

As part of a paint film thickness measuring the body outer skin no previous damage could be detected .

**Layers of paint thickness measurement:**

**Within the tolerances**

At the vehicle , a resist layer thickness measurement was carried out on the body outer skin. The measured values ??were within the tolerances of original finishes . Evidence that points to a repaired accident damage or repainting carried out , were identified.

**Existing collision damage:**

-  
-

**reference:**

#### Overview conducted technology audit

<b>Alternator / Generator:</b>	✓ examined limited	<b>Battery / accumulator:</b>	✓ in order
<b>oil loss:</b>	✓ examined limited		
<b>air conditioning:</b>	✓ examined limited	<b>lighting system:</b>	✓ examined limited
<b>coupling:</b>	✗ unavailable	<b>exhaust System:</b>	✓ examined limited
<b>engine running:</b>	✓ examined limited	<b>shock absorber:</b>	✓ examined limited
<b>transmission:</b>	✓ examined limited		

#### Performed testing technology

<b>Alternator / Generator:</b>	The function of the alternator (generator) was tested using the charging indicator light in the instrument cluster .
<b>Battery / accumulator:</b>	The battery (accumulator) was examined during the inspection .
<b>oil loss:</b>	The vehicle could be checked only limited to oil leaks .
<b>air conditioning:</b>	The air conditioning system could be tested only restricted during the visit .
<b>lighting system:</b>	The Lichtanlage could be considered limited to the tour date .
<b>coupling:</b>	The vehicle has no clutch , as it is a Autmatikgetriebe or the like.
<b>exhaust System:</b>	The exhaust system has been tested only restricted during the visit .
<b>engine running:</b>	Checking the engine running was limited. Here no audible or visual abnormalities were noted .
<b>shock absorber:</b>	The shock absorber could be tested only restricted during the visit .
<b>transmission:</b>	The transmission could be examined in the context of limited test drive / pull test .
<b>reference:</b>	*

damage



	component	Damage	Rep kind
1.	Wartungsnachweis	Missing	Replace
2.	Rear bumper	Wear and tear	acceptable
3.	Sidewall - Rear - right	Scratch(es)	
4.	Außenspiegelkappe re.	Scratch(es)	Paint
5.	Front bumper	Scrape	Paint
6.	Wartung	Missing	Replace

The expert points out that the vehicle in addition to age to the damage listed in the report and may have a high mileage -related wear , as in normal use are inevitable ( small bumps , dents , scratches) and thus is not entitled to change or reduction .

There shall be no liability for any defect and / or remained hidden damage in terms of electronics and mechanics accepted ,\r\nand for fraudulent misrepresentation and concealed defects .



photographic record



front Left



front Right



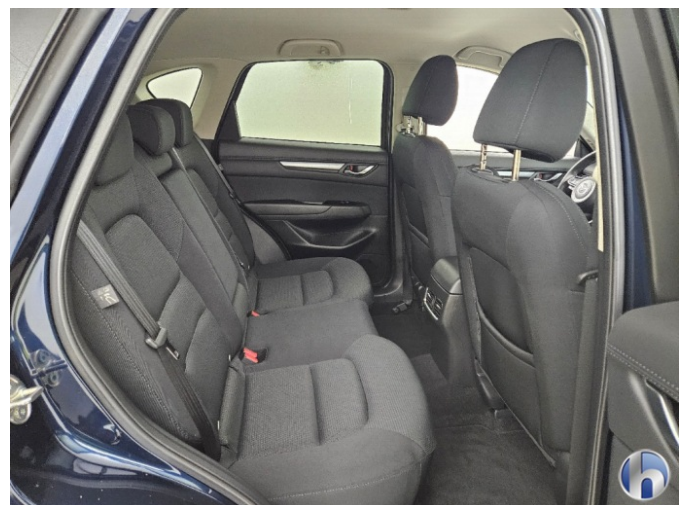
rear Left



rear Right



inside



inside





trunk



instrument cluster



mileage



filler cap



rims



rims





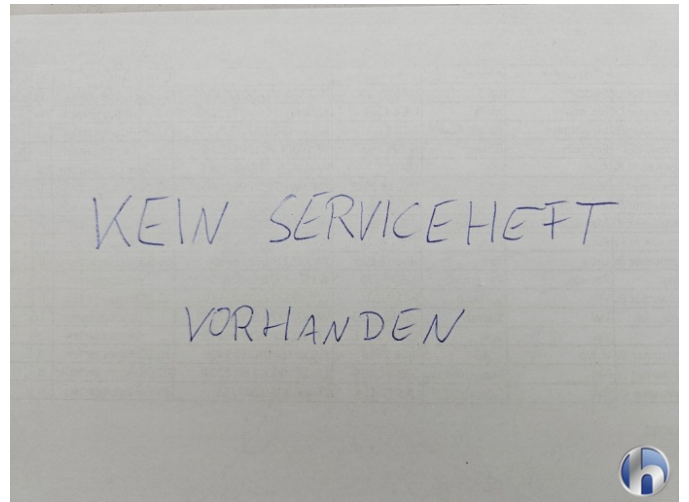
rims



rims



engine compartment



service book



Others

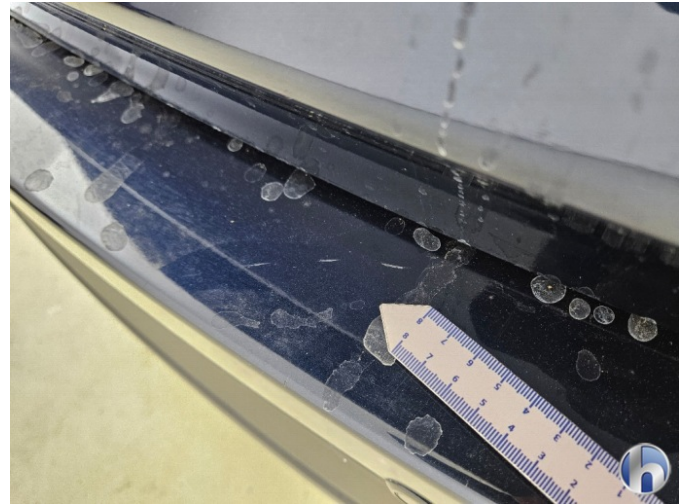


Navigation system





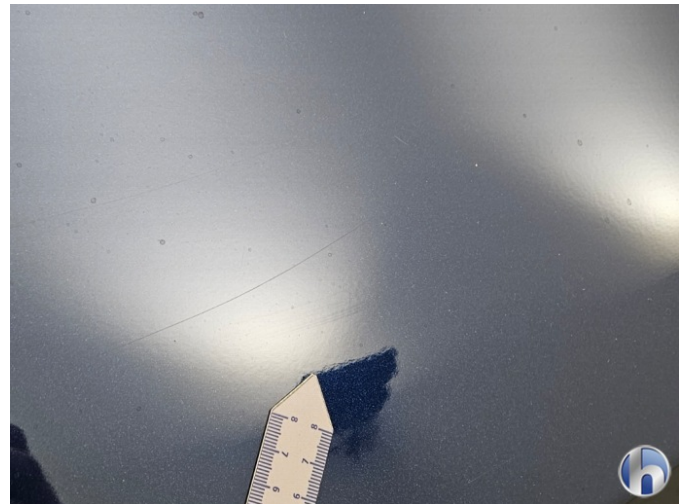
2. Rear bumper



2. Rear bumper



3. Sidewall - Rear - right



3. Sidewall - Rear - right



4. Außenspiegelkappe re.



5. Front bumper



5. Front bumper



5. Front bumper