



MAZDA CX-5

CX-5 SKYACTIV-D 175 Drive AWD

VIN NO JMZKEN92800469411
Registration Number 2800469411



MOT Date	Number of Owners	Number of Keys	Odometer Reading
2025-08-01	2	2	180907 km
Last Service	Last Service Mileage	First Registration Date	Country First Registered
-	-	2016-01-25	Germany

Inspection Report Summary

Customer	BCA Online	Report Number	P20250903130815
Inspection Date / Place	2025-09-03 / BCA Berlin	Cosmetic Grade	4

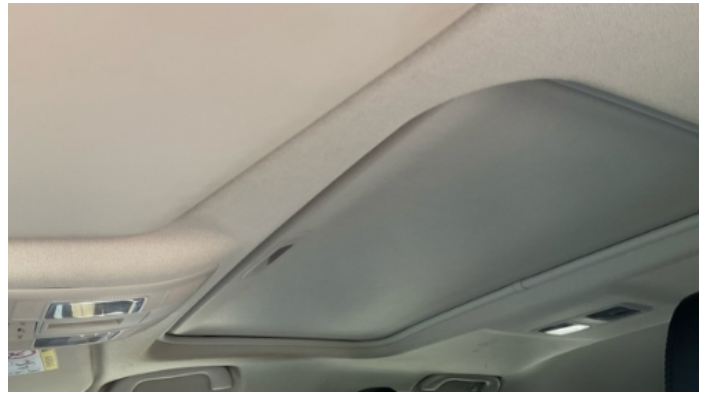
Vehicle Summary

Vehicle Condition	Runner	VAT Type	Margin
Fuel Type	Diesel	Road Worthy	Yes
Colour	Red	Engine Size (cc)	2191
Engine Size	2.2	No of Doors	5
Body Type	SUV	Drive Train	All-Wheel-Drive permanent
Seat Colour		No of Seats	5
Seat Covering Name		Seat Covering	Leather
Charging Cables		NEDC CO2 Rating (q/km)	144
Gearbox Type	Automatic		

Vehicle History & Documents

Service Book Available	Missing	Next Service Mileage	km
Previous Usage		Imported	No
Manufacturer Warrenty			







Equipment

Tinted Glass	USB Socket	Airbag Status	Anti-lock braking
Diesel particulate filter	Enhanced speaker system	Remote adjusting wing mirrors	Reversing Camera
Split folding rear seats	Sunroof	Electrically adjustable seats	Leather steering wheel
Tow ball	Adaptivecruisecontrol	Alloys wheels	Bluetooth telephone interface
Digital Radio	Front parking sensors	Remote central locking	Satellite navigation
Stability control	Xenon headlamps	Electrically folding wing mirrors	Rear parking sensors

Equipment Details

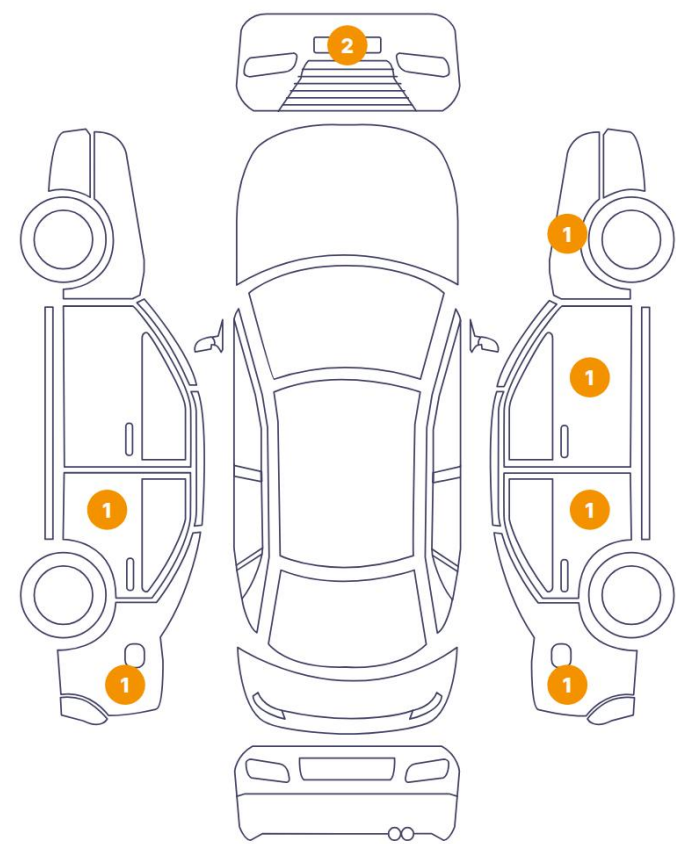
Tow Ball Type	Detachable	Air Conditioning	Dual Zone Climate Control
Alloy Wheel Size	19	Enhanced Speaker System	Bose
Seat Heating	Front	Sunroof Type	Tilt/Slide Glass

Wheels & Tyres

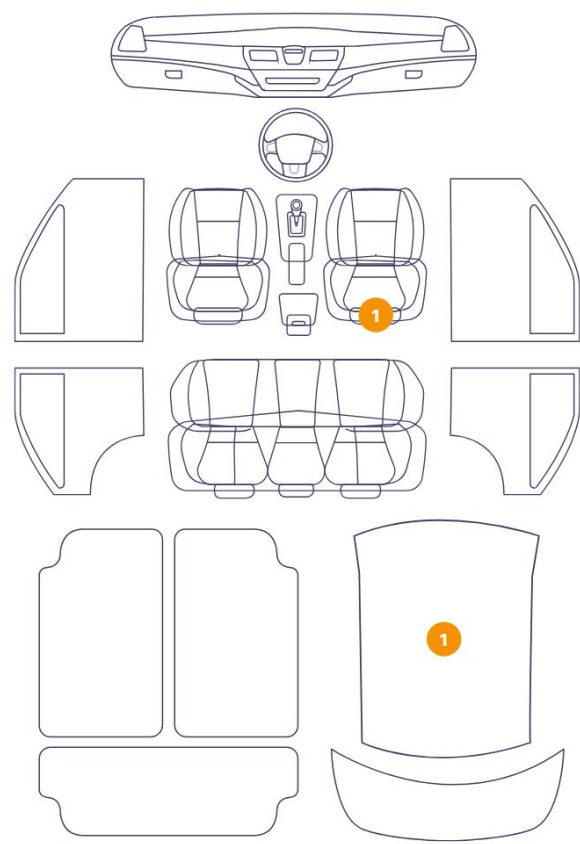
Right Front Tyre Depth	6	Left Front Tyre Depth	6
Right Rear Tyre Depth	7	Left Rear Tyre Depth	7

Cosmetic Damage

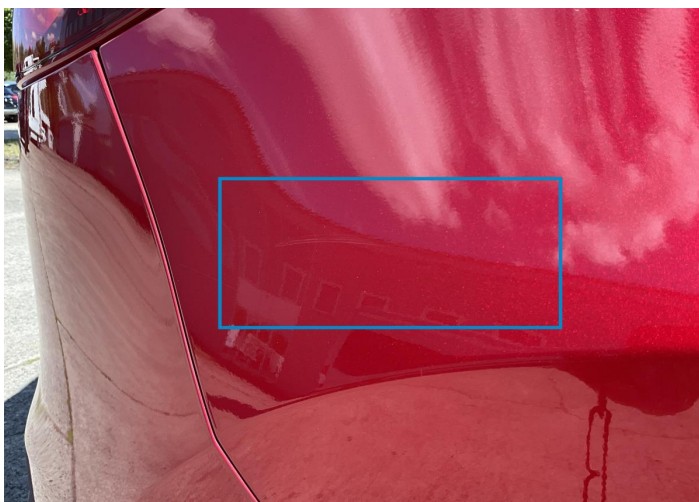
8 Schäden



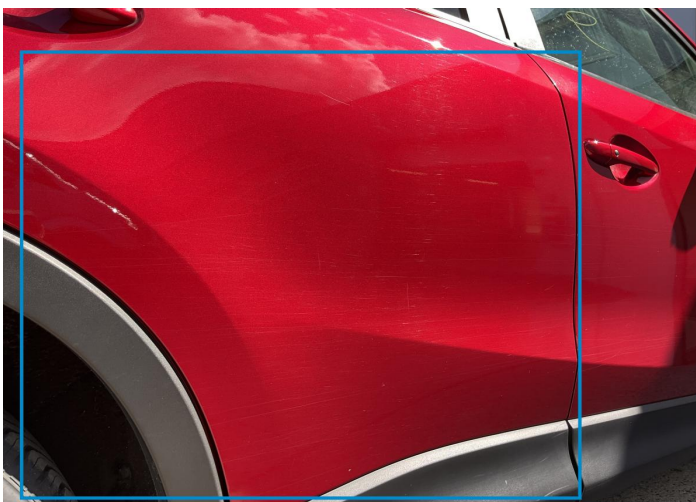
2 Schäden



Component		Damage	Comments
1	Side Panel / Back Right	Paint / Scratch / Scuff	
2	Door / Back Right	Paint / Scratch / Scuff	
3	Door / Front Right	Paint / Scratch / Scuff	
4	Fender / Front Right	Paint / Scratch / Scuff	
5	Bumper / Front	Paint / Chipping	
6	Bumper / Front	Paint / Stone Chip	
7	Door / Back Left	Paint / Scratch / Scuff	
8	Side Panel / Back Left	Paint / Scratch / Scuff	
9	Seat / Front Right	Interior / Holed	
10	Roof Upholstery	Interior / Dirty	



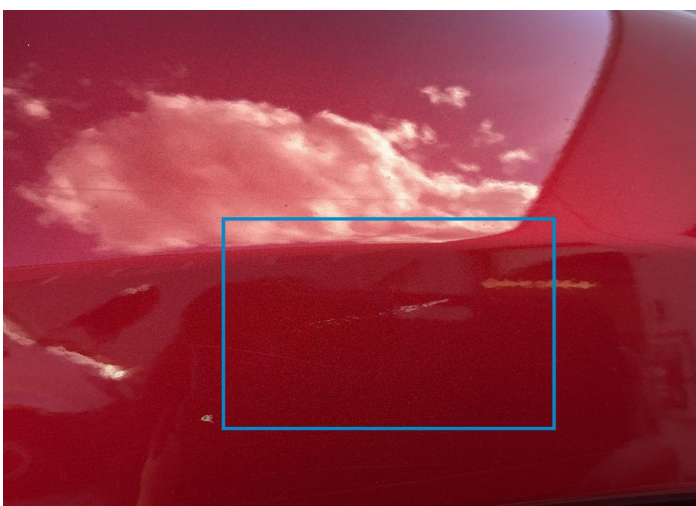
1. Side Panel / Back Right
Paint / Scratch / Scuff -



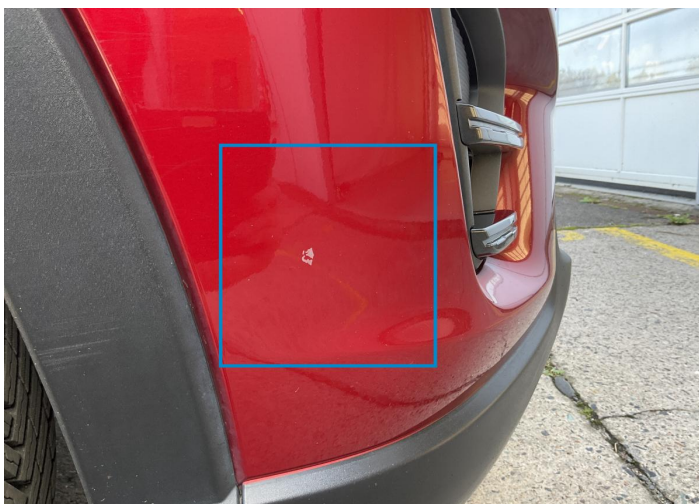
2. Door / Back Right
Paint / Scratch / Scuff -



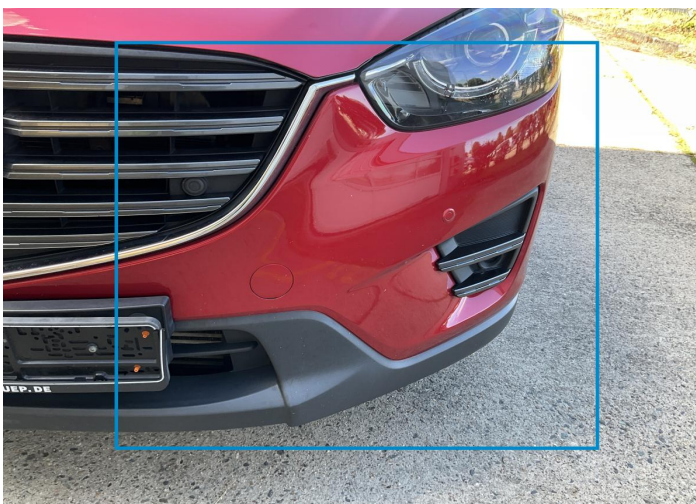
3. Door / Front Right
Paint / Scratch / Scuff -



4. Fender / Front Right
Paint / Scratch / Scuff -



5. Bumper / Front
Paint / Chipping -



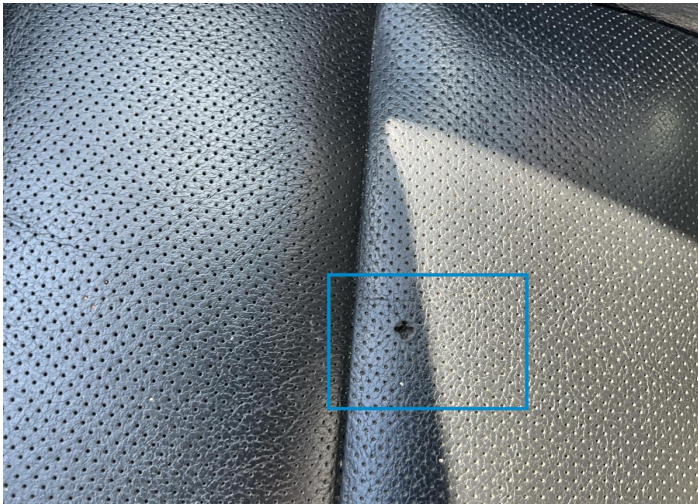
6. Bumper / Front
Paint / Stone Chip -



7. Door / Back Left
Paint / Scratch / Scuff -



8. Side Panel / Back Left
Paint / Scratch / Scuff -



9. Seat / Front Right
Interior / Holed -



10. Roof Upholstery
Interior / Dirty -

Mechanical Condition

Control Lights

Display Defect	✓	ABS Warning Light	✓
Oil Pressure Warning Light	✓	Airbag Warning Light	✓
Brake Warning Light	✓	Power Steering Warning Light	✓
ESP Fault/Traction Control Malfunction Light	✓	Alternator / Battery	!
No Dashboard Lights	✓	Diesel Particulate Filter Light	✓

Engine

Engine Leak Visible	✓	Engine Starts	!
Engine Status / EML	✓		

Levels

Coolant Fluid	✓	Brakes Fluid	✓
---------------	---	--------------	---

Equipments Test

Electric Windows	✓	Central Locking	✓
Audio Equipment	✓	Navigation System	✓
Main & Spare Keys Functioning	✓	Parking Sensors / Cameras Functioning	✓
AC / Heating System	✓		

Gearbox

Gear Box	✓
----------	---

Test Drive Inspection

Engine			
Fume Quantity	✓	Engine Noise	✓
The Gears Scratch / Skip / Abnormal Operation	✓		
Steering Wheel			
Steering Noise / Anomaly	✓		
Brake			
Brake System Anomaly	✓		
Gearbox			
Automatic Shift	✓		

- ✓ *No troubles detected, good condition or correct tests, according to vehicle age and mileage*
- ! *Damages or malfunction detected that requires repairs by the buyer*
- NA *Not applicable*
- ☐ *Not tested*

Disclaimer

Please also note the "UserGuide condition report", which shows the scope of the vehicle description.

[User Guide](#)