



# MAZDA CX-3

## CX-3 SKYACTIV-G 120 FWD

VIN NO JMZDK6W7610179193  
Registration Number 7610179193



MOT Date	Number of Owners	Number of Keys	Odometer Reading
-	2	2	75821 km
Last Service	Last Service Mileage	First Registration Date	Country First Registered
-	-	2016-11-29	-

### Inspection Report Summary

Customer	BCA Online	Report Number	P20250917133205
Inspection Date / Place	2025-09-17 / ARS Altmann AG Riedstadt	Cosmetic Grade	3

### Vehicle Summary

Vehicle Condition	Runner	VAT Type	Margin
Fuel Type	Petrol	Road Worthy	Yes
Colour	Blue	Engine Size (cc)	1998
Engine Size	2.0	No of Doors	5
Body Type	SUV	Drive Train	Front
Seat Colour		No of Seats	5
Seat Covering Name	Schwarz	Seat Covering	Cloth
Charging Cables		NEDC CO2 Rating (q/km)	137
Gearbox Type	Manual		

### Vehicle History & Documents

Service Book Available	Incomplete	Next Service Mileage	km
Previous Usage		Imported	No
Manufacturer Warrenty			









Equipment

Tinted Glass	USB Socket	Alloys wheels	Auxiliary Socket
Cruise control	Remote adjusting wing mirrors	Satellite navigation	Stability control
Central locking	Leather steering wheel	Rear parking sensors	Trip Computer
Airbag Status	Anti-lock braking	Bluetooth telephone interface	Digital Radio
Remote central locking	Split folding rear seats	CD Player	Electrically folding wing mirrors

Radio

Equipment Details

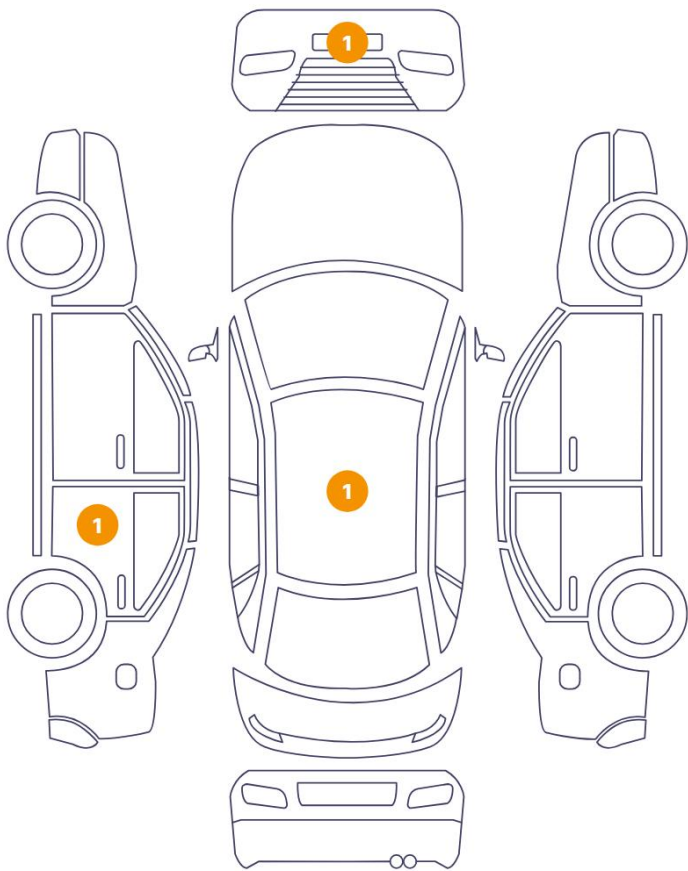
Air Conditioning	Climate Control	Alloy Wheel Size	16
Seat Heating	Front		

Wheels & Tyres

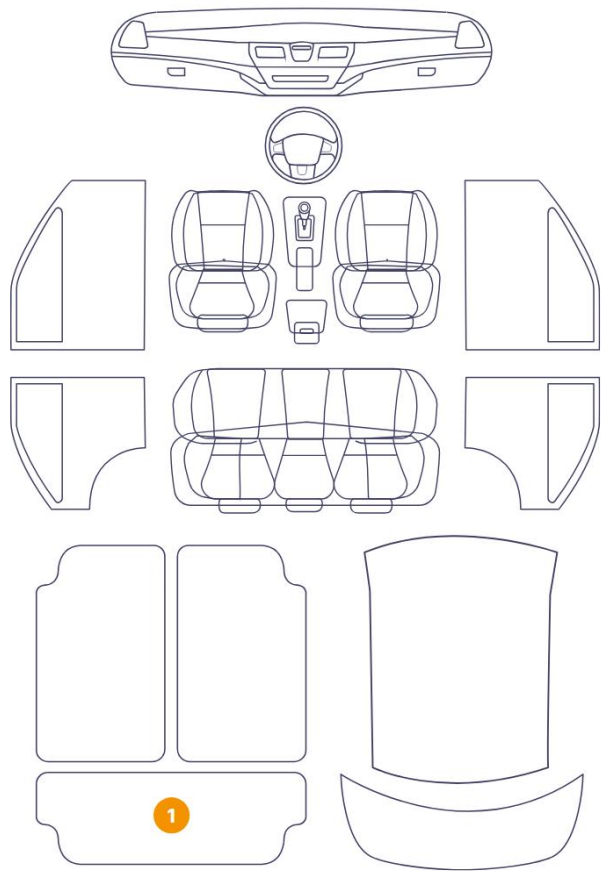
Right Front Tyre Depth	8	Left Front Tyre Depth	8
Right Rear Tyre Depth	9	Left Rear Tyre Depth	9

Cosmetic Damage

3 Schäden



1 Schäden

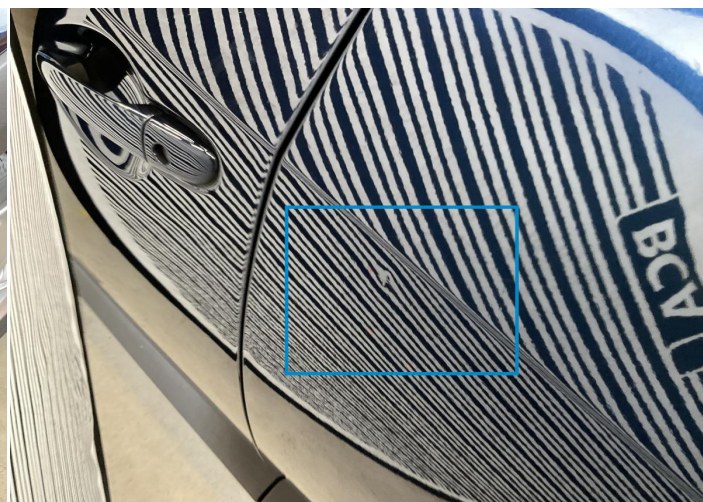


Component	Damage	Comments
1 Bumper / Front	Paint / Scratch / Scuff	
2 Door / Back Left	Bodywork / Dent / Dent	
3 Luggage Space Cover / Back	Interior / Dysfunctional	
4 Roof	Bodywork / Dent / Hail Area	





1. Bumper / Front  
Paint / Scratch / Scuff -



2. Door / Back Left  
Bodywork / Dent / Dent -



3. Luggage Space Cover / Back  
Interior / Dysfunctional -



4. Roof  
Bodywork / Dent / Hail Area -

## Mechanical Condition

### Control Lights

Display Defect	✓	Service Light	✓
ABS Warning Light	✓	ESP Fault/Traction Control Malfunction Light	✓
Airbag Warning Light	✓	Oil Pressure Warning Light	✓
Brake Warning Light	✓	Power Steering Warning Light	✓
Alternator / Battery	✓	No Dashboard Lights	✓
Tire Pressure Monitoring System	✓		

### Equipments Test

Central Locking	✓	Main & Spare Keys Functioning	!
Electric Windows	✓	Navigation System	✓
Audio Equipment	✓		

### Engine

Engine Status / EML	✓	Engine Leak Visible	✓
Engine Starts	✓		

### Gearbox

Gear Box	✓
----------	---

### Levels

Brakes Fluid	✓	Coolant Fluid	✓
--------------	---	---------------	---



Test Drive Inspection

Steering Wheel			
Steering   Noise / Anomaly		✓	
Engine			
Engine Noise	✓	The Gears Scratch / Skip / Abnormal Operation	✓
Fume Quantity	✓	Power Loss	✓
Clutch			
Clutch Functioning		✓	
Brake			
Brake System Anomaly		✓	
General			
Test Driven Status		✓	
✓ No troubles detected, good condition or correct tests, according to vehicle age and mileage			
! Damages or malfunction detected that requires repairs by the buyer			
NA Not applicable			
☐ Not tested			

Disclaimer

Please also note the "UserGuide condition report", which shows the scope of the vehicle description.

[User Guide](#)