



MITSUBISHI Outlander

Outlander 2.0 DI-D 4WD

VIN NO JMBXJCW8W7U022065

Registration Number 8W7U022065



MOT Date

2026-08-01

Last Service



Number of Owners

2

Last Service Mileage



Number of Keys

2

First Registration Date

2007-09-24

Odometer Reading

279822 km

Country First Registered

Germany

Inspection Report Summary

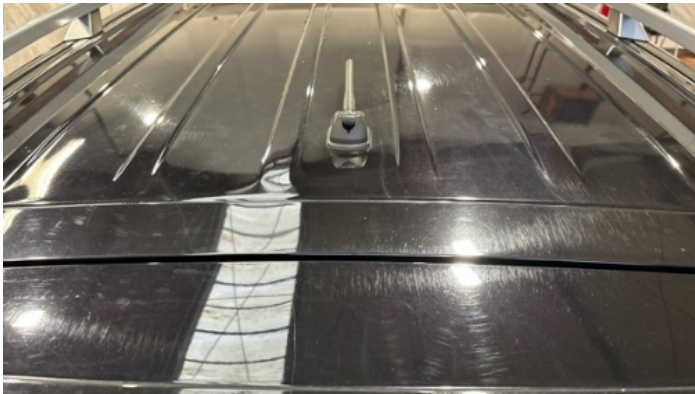
Customer	BCA Online	Report Number	P20250924140823
Inspection Date / Place	2025-09-24 / BCA Oberndorf	Cosmetic Grade	5

Vehicle Summary

Vehicle Condition	Runner	VAT Type	Margin
Fuel Type	Diesel	Road Worthy	Yes
Colour	Black	Engine Size (cc)	1968
Engine Size	2.0	No of Doors	5
Body Type	SUV	Drive Train	All-Wheel-Drive switchable
Seat Colour		No of Seats	5
Seat Covering Name	Schwarz	Seat Covering	Synthetic Leather
Charging Cables		NEDC CO2 Rating (q/km)	183
Gearbox Type	Manual		

Vehicle History & Documents

Service Book Available	Missing	Next Service Mileage	km
Previous Usage		Imported	No
Manufacturer Warrenty			







Equipment

Tinted Glass	Airbag Status	Anti-lock braking	Diesel particulate filter
Remote adjusting wing mirrors	Roof rails	Stability control	CD Player
Electrically folding wing mirrors	Radio	Driver Seat Electrically adjustable	Tow ball
Alloys wheels	Cruise control	Front fog lamps	Remote central locking
Split folding rear seats	Sunroof	Central locking	Leather steering wheel
Rear parking sensors			

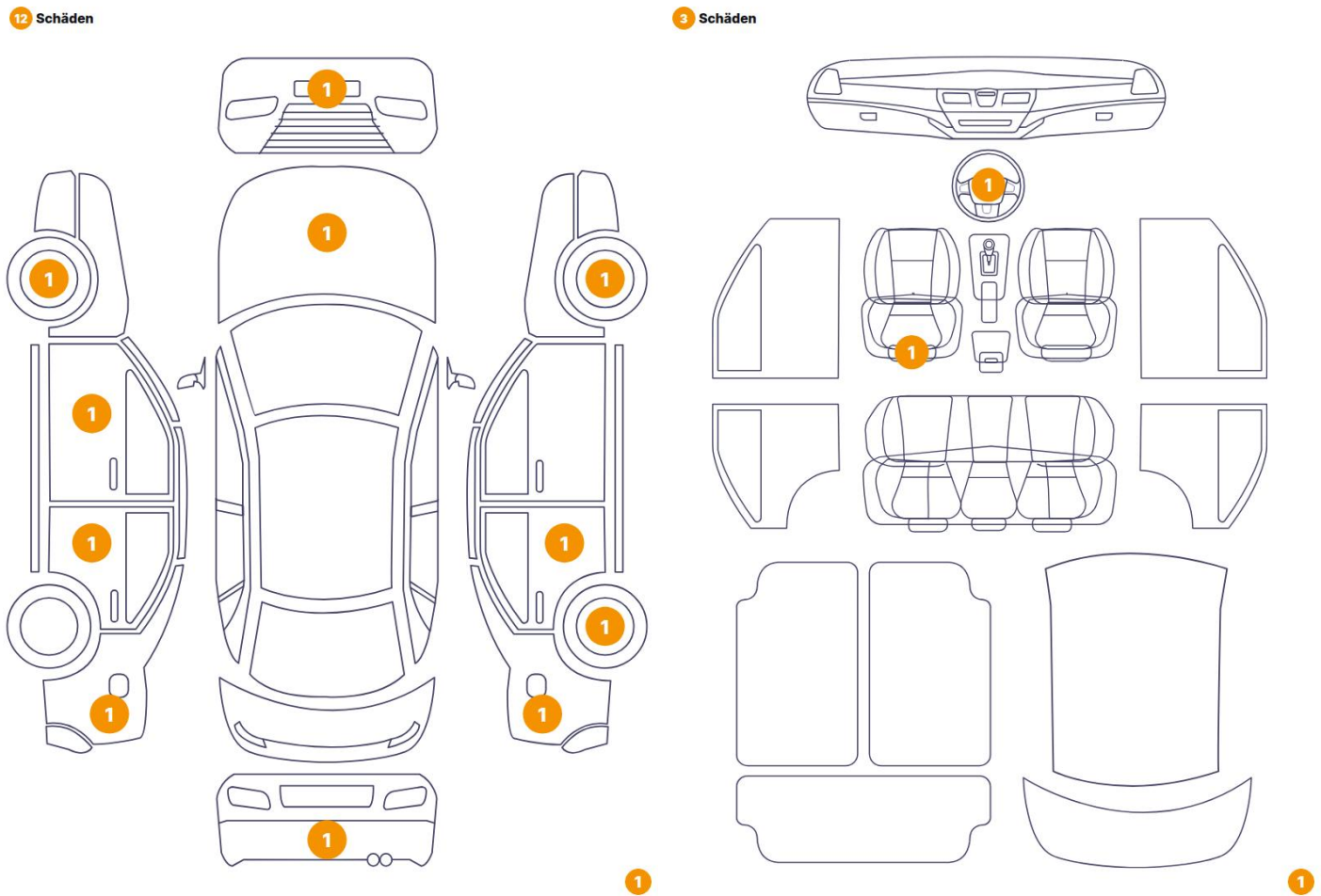
Equipment Details

Tow Ball Type	Detachable	Air Conditioning	Climate Control
Alloy Wheel Size	18	Extra Wheel / Tyre Set	Winter Tyres - Alloy
Seat Heating	Front	Sunroof Type	Tilt/Slide Glass

Wheels & Tyres

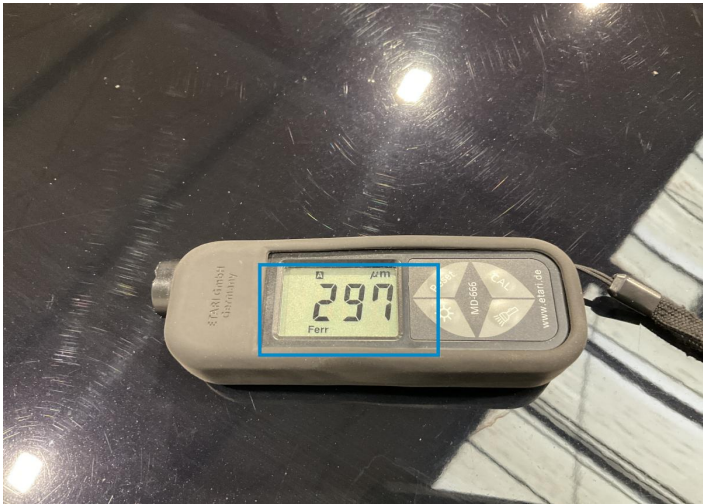
Extra Wheel - 1 Tyre Depth	4	Extra Wheel - 2 Tyre Depth	4
Right Front Tyre Depth	2	Left Front Tyre Depth	2
Right Rear Tyre Depth	2	Left Rear Tyre Depth	2

Cosmetic Damage



Component		Damage	Comments
1	Other	Anomalyon Element	
2	Hood	Bodywork / Dent / Dent	
3	Bumper / Front	Bodywork / Breakage / Crack	
4	Rim / Front Left	Out of Bodywork / Scratch	
5	Door / Front Left	Bodywork / Dent / Dent	
6	Door / Back Left	Bodywork / Dent / Dent	
7	Seat / Front Left	Interior / Scratched	
8	Steering Wheel / Front	Interior / Scratched	
9	Other	Interior / Scratched	
10	Bumper / Back	Bodywork / Breakage / Crack	
11	Fender / Back Left	Paint / Scratch / Line	
12	Rim / Back Right	Out of Bodywork / Scratch	

13	Fender / Back Right	Bodywork / Dent / Dent
14	Door / Back Right	Bodywork / Dent / Dent
15	Rim / Front Right	Out of Bodywork / Scratch



1.
Anomalyon Element -



2. Hood
Bodywork / Dent / Dent -



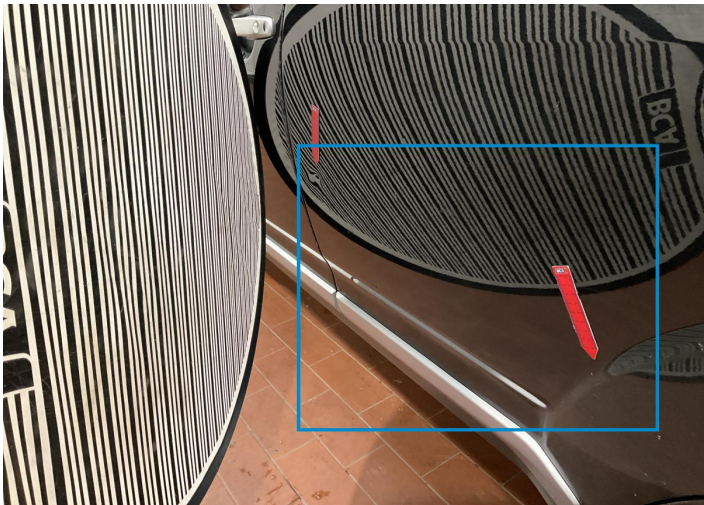
3. Bumper / Front
Bodywork / Breakage / Crack -



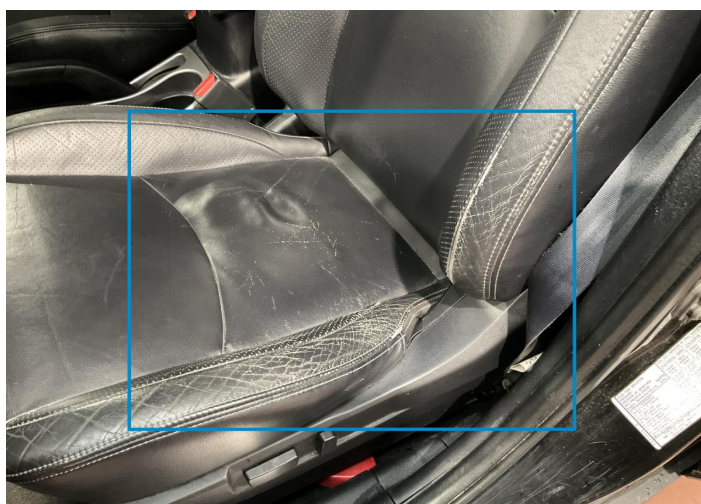
4. Rim / Front Left
Out of Bodywork / Scratch -



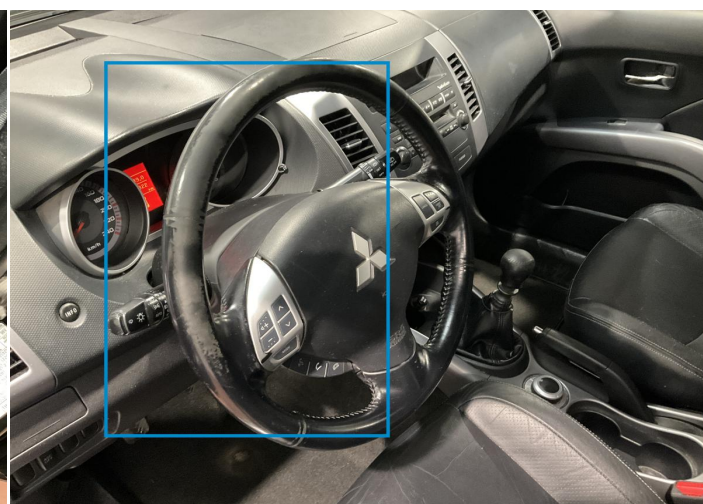
5. Door / Front Left
Bodywork / Dent / Dent -



6. Door / Back Left
Bodywork / Dent / Dent -



7. Seat / Front Left
Interior / Scratched -



8. Steering Wheel / Front
Interior / Scratched -



9.
Interior / Scratched -



10. Bumper / Back
Bodywork / Breakage / Crack -



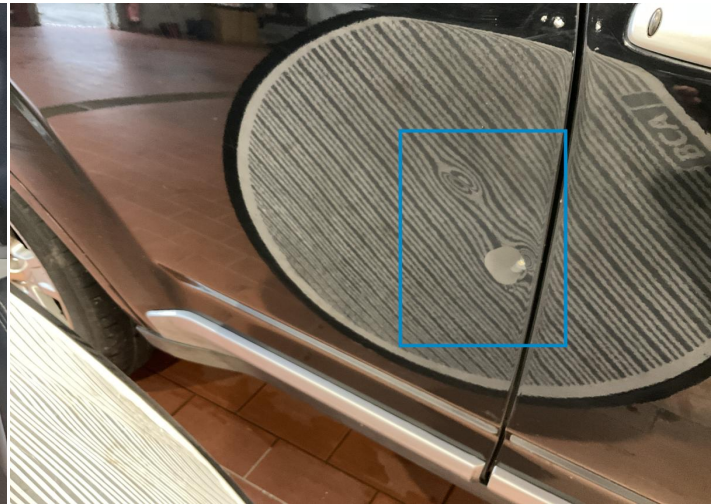
11. Fender / Back Left
Paint / Scratch / Line -



12. Rim / Back Right
Out of Bodywork / Scratch -



13. Fender / Back Right
Bodywork / Dent / Dent -



14. Door / Back Right
Bodywork / Dent / Dent -



15. Rim / Front Right
Out of Bodywork / Scratch -

Mechanical Condition

Equipments Test

Central Locking	✓	Audio Equipment	✓
AC / Heating System	✓	Main & Spare Keys Functioning	✓
Electric Windows	✓	Parking Sensors / Cameras Functioning	⚠
Other Equipments	✓		

Control Lights

ABS Warning Light	✓	ESP Fault/Traction Control Malfunction Light	✓
Diesel Particulate Filter Light	✓	Airbag Warning Light	✓
Oil Pressure Warning Light	✓	Brake Warning Light	✓
Power Steering Warning Light	✓	Alternator / Battery	✓
All - wheel Drive	✓	No Dashboard Lights	✓
Display Defect	✓	Service Light	✓

Engine

Engine Status / EML	⚠	Engine Leak Visible	⚠
Engine Starts	✓		

Gearbox

Gear Box	✓
----------	---

Levels

Brakes Fluid	✓	Coolant Fluid	✓
--------------	---	---------------	---

Test Drive Inspection

Steering Wheel			
Steering Noise / Anomaly		✔	
Engine			
Engine Noise	✔	The Gears Scratch / Skip / Abnormal Operation	✔
Fume Quantity	✔	Power Loss	✔
Brake			
Brake System Anomaly		✔	
Clutch			
Clutch Functioning		✔	
General			
Test Driven Status		Not Performed	
✔ <i>No troubles detected, good condition or correct tests, according to vehicle age and mileage</i>			
! <i>Damages or malfunction detected that requires repairs by the buyer</i>			
NA <i>Not applicable</i>			
= <i>Not tested</i>			

Disclaimer

Please also note the "UserGuide condition report", which shows the scope of the vehicle description.

[User Guide](#)