



# MITSUBISHI Outlander

## Outlander 2.0 4WD Plug-In Hybrid

VIN NO JMBXDGG2WEZ012528

Registration Number 2WEZ012528



MOT Date

2025-06-01

Last Service



Number of Owners

1

Last Service Mileage



Number of Keys

2

First Registration Date

2014-05-06

Odometer Reading

77263 km

Country First Registered

Germany

### Inspection Report Summary

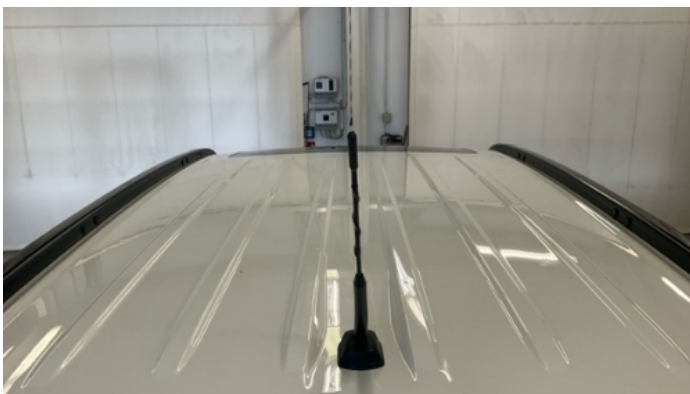
Customer	BCA Online	Report Number	P20250915132442
Inspection Date / Place	2025-09-15 / BCA Berlin	Cosmetic Grade	3

### Vehicle Summary

Vehicle Condition	Runner	VAT Type	Margin
Fuel Type	Plug - in Hybrid Electric Vehicle Petrol	Road Worthy	Unknown
Colour	White	Engine Size (cc)	1998
Engine Size	2.0	No of Doors	5
Body Type	SUV	Drive Train	All-Wheel-Drive permanent
Seat Colour		No of Seats	5
Seat Covering Name	Schwarz	Seat Covering	Synthetic Leather
Charging Cables	Others	NEDC CO2 Rating (q/km)	44
Gearbox Type	Automatic		

### Vehicle History & Documents

Service Book Available	Present	Next Service Mileage	km
Previous Usage		Imported	No
Manufacturer Warrenty			













Equipment

Tinted Glass	Alloys wheels	Cruise control	Remote adjusting wing mirrors
Reversing Camera	Satellite navigation	Sunroof	Electrically folding wing mirrors
Radio	Airbag Status	Anti-lock braking	Front fog lamps
Remote central locking	Roof rails	Stability control	Xenon headlamps
Electrictailgate			

Equipment Details

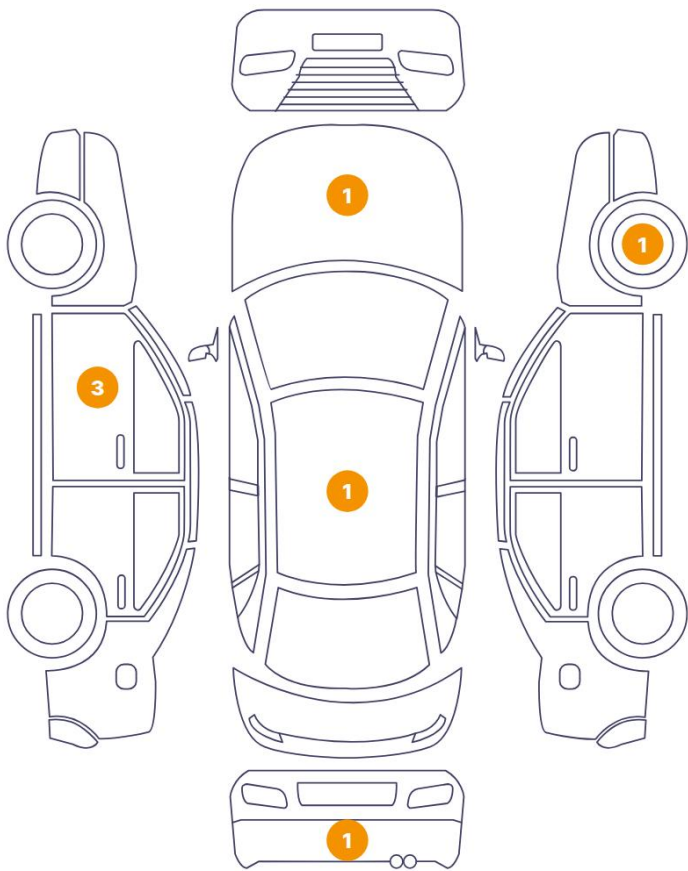
Air Conditioning	Dual Zone Climate Control	Alloy Wheel Size	18
Extra Wheel / Tyre Set	Winter Tyres - Steel	Seat Heating	Front
Sunroof Type	Tilt/Slide Glass		

Wheels & Tyres

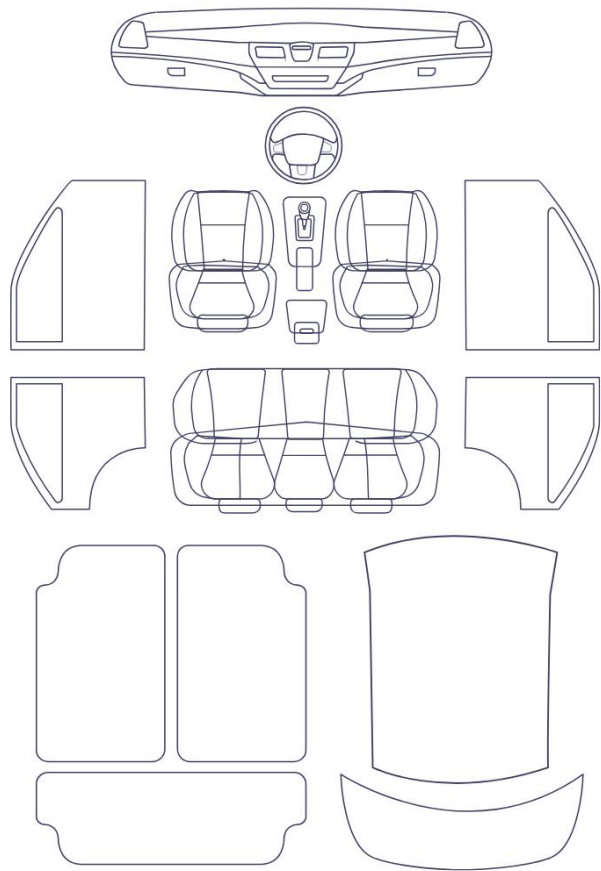
Extra Wheel - 1 Tyre Depth	7	Extra Wheel - 2 Tyre Depth	6
Extra Wheel - 3 Tyre Depth	6	Extra Wheel - 4 Tyre Depth	6
Right Front Tyre Depth	5	Left Front Tyre Depth	6
Right Rear Tyre Depth	6	Left Rear Tyre Depth	6

Cosmetic Damage

7 Schäden



0 Schäden



Component		Damage	Comments
1	Rim / Front Right	Out of Bodywork / Scratch	
2	Mirror / Front Left	Bodywork / Breakage / Crack	
3	Door / Front Left	Bodywork / Dent / Dent	
4	Bumper / Back	Paint / Scratch / Scuff	
5	Roof	Bodywork / Dent / Dent	
6	Hood	Bodywork / Dent / Dent	
7	Door / Front Left	Bodywork / Dent / Dent	

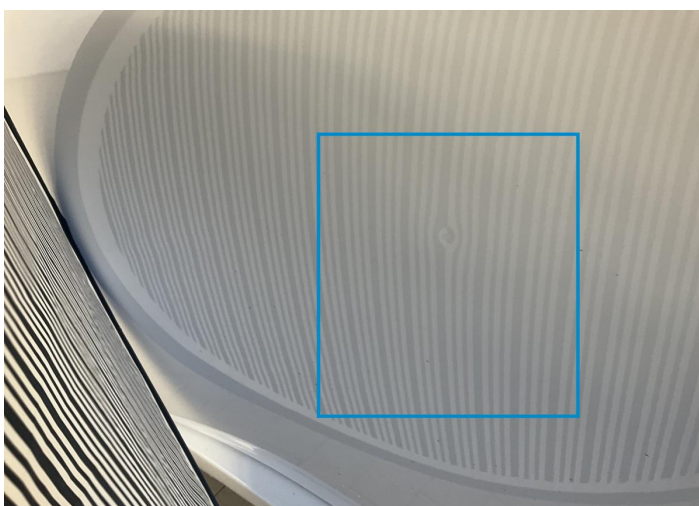




1. Rim / Front Right  
Out of Bodywork / Scratch -



2. Mirror / Front Left  
Bodywork / Breakage / Crack -



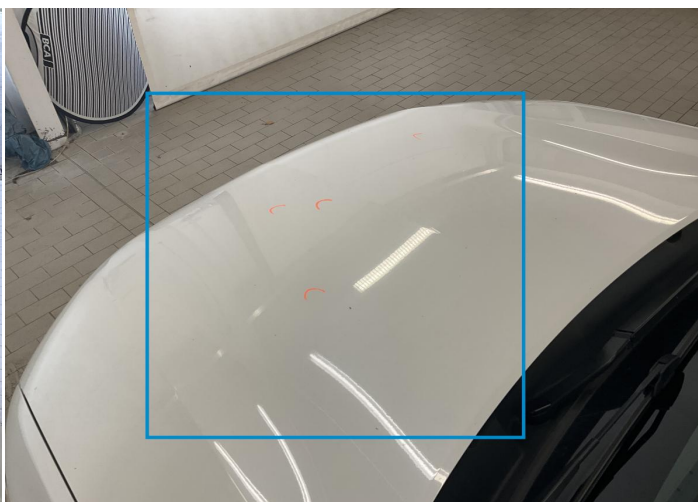
3. Door / Front Left  
Bodywork / Dent / Dent -



4. Bumper / Back  
Paint / Scratch / Scuff -

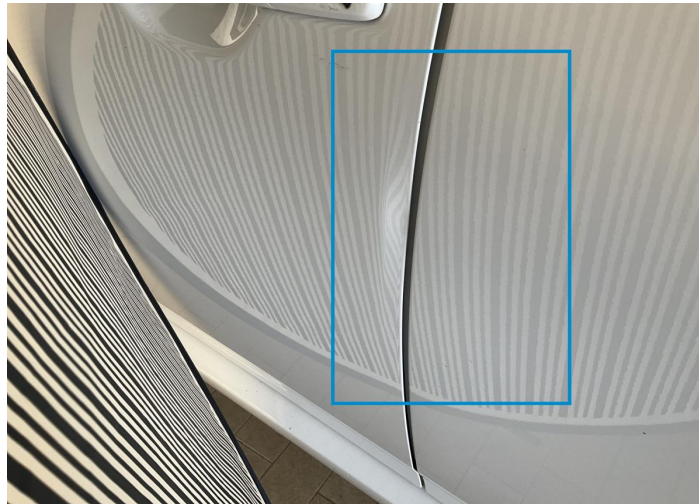


5. Roof  
Bodywork / Dent / Dent -



6. Hood  
Bodywork / Dent / Dent -





7. Door / Front Left  
Bodywork / Dent / Dent -

## Mechanical Condition

### Control Lights

ABS Warning Light	✓	ESP Fault/Traction Control Malfunction Light	✓
Airbag Warning Light	✓	Oil Pressure Warning Light	✓
Brake Warning Light	✓	Power Steering Warning Light	✓
Alternator / Battery	✓	No Dashboard Lights	✓
Display Defect	✓	Tire Pressure Monitoring System	✓

### Engine

Engine Status / EML	✓	Engine Leak Visible	✓
Engine Starts	✓		

### Levels

Brakes Fluid	✓	Coolant Fluid	✓
--------------	---	---------------	---

### Equipments Test

Main & Spare Keys Functioning	✓	Electric Windows	✓
Navigation System	✓	Audio Equipment	✓
Parking Sensors / Cameras Functioning	✓	AC / Heating System	✓
Other Equipments	✓		

### Hybrid/EV

Charge Lead Condition	✓	Charge Port Condition	✓
Hybrid System Fault	✓		

## Test Drive Inspection

Engine			
Engine Noise	✓	The Gears Scratch / Skip / Abnormal Operation	✓
Fume Quantity	✓	Power Loss	✓
Brake			
Brake System Anomaly	✓		
Steering Wheel			
Steering   Noise / Anomaly	✓		
General			
Test Driven Status	✓		
✓ <i>No troubles detected, good condition or correct tests, according to vehicle age and mileage</i>			
! <i>Damages or malfunction detected that requires repairs by the buyer</i>			
NA <i>Not applicable</i>			
☐ <i>Not tested</i>			

## Disclaimer

Please also note the "UserGuide condition report", which shows the scope of the vehicle description.

[User Guide](#)