



MITSUBISHI Outlander

Outlander 2.0 4WD Plug-In Hybrid

VIN NO JMBXDGG2WEZ012528
Registration Number 2WEZ012528



MOT Date	Number of Owners	Number of Keys	Odometer Reading
2025-06-01	1	2	77263 km
Last Service	Last Service Mileage	First Registration Date	Country First Registered
-	-	2014-05-06	Germany

Inspection Report Summary

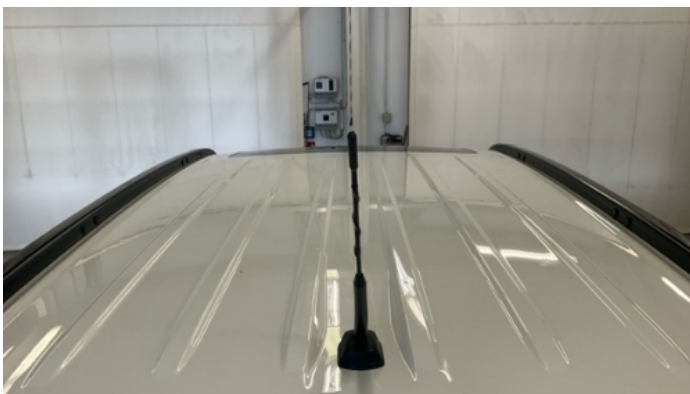
Customer	BCA Online	Report Number	P20250915132442
Inspection Date / Place	2025-09-15 / BCA Berlin	Cosmetic Grade	3

Vehicle Summary

Vehicle Condition	Runner	VAT Type	Margin
Fuel Type	Plug - in Hybrid Electric Vehicle Petrol	Road Worthy	Unknown
Colour	White	Engine Size (cc)	1998
Engine Size	2.0	No of Doors	5
Body Type	SUV	Drive Train	All-Wheel-Drive permanent
Seat Colour		No of Seats	5
Seat Covering Name	Schwarz	Seat Covering	Synthetic Leather
Charging Cables	Others	NEDC CO2 Rating (q/km)	44
Gearbox Type	Automatic		

Vehicle History & Documents

Service Book Available	Present	Next Service Mileage	km
Previous Usage		Imported	No
Manufacturer Warrenty			









Equipment

Tinted Glass	Alloys wheels	Cruise control	Remote adjusting wing mirrors
Reversing Camera	Satellite navigation	Sunroof	Electrically folding wing mirrors
Radio	Airbag Status	Anti-lock braking	Front fog lamps
Remote central locking	Roof rails	Stability control	Xenon headlamps
Electrictailgate			

Equipment Details

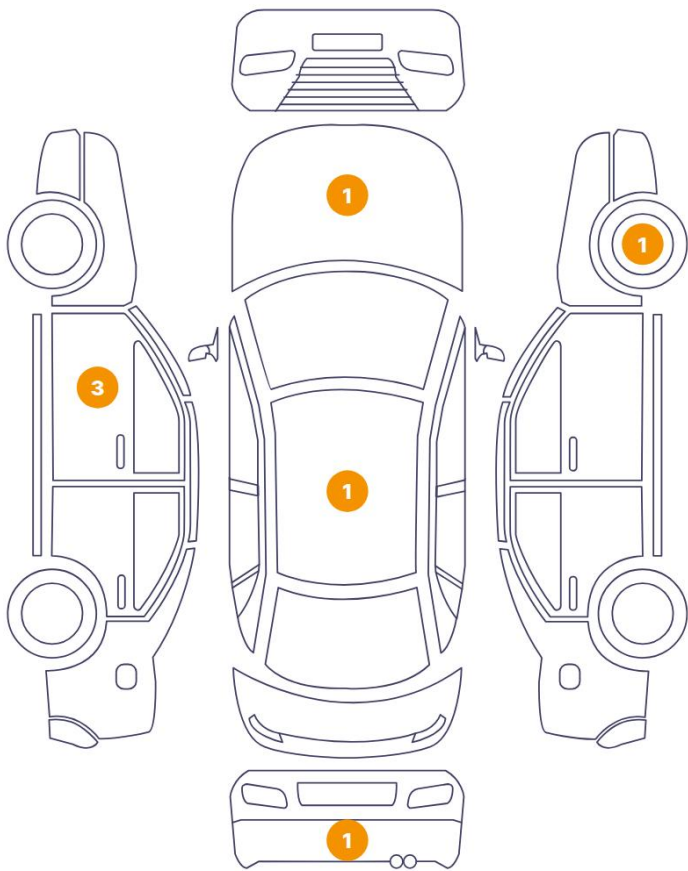
Air Conditioning	Dual Zone Climate Control	Alloy Wheel Size	18
Extra Wheel / Tyre Set	Winter Tyres - Steel	Seat Heating	Front
Sunroof Type	Tilt/Slide Glass		

Wheels & Tyres

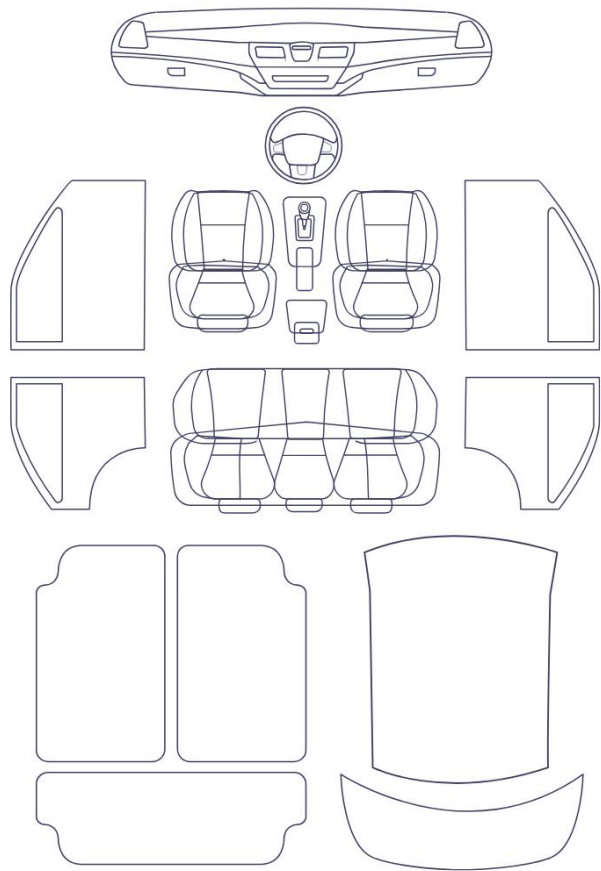
Extra Wheel - 1 Tyre Depth	7	Extra Wheel - 2 Tyre Depth	6
Extra Wheel - 3 Tyre Depth	6	Extra Wheel - 4 Tyre Depth	6
Right Front Tyre Depth	5	Left Front Tyre Depth	6
Right Rear Tyre Depth	6	Left Rear Tyre Depth	6

Cosmetic Damage

7 Schäden



0 Schäden



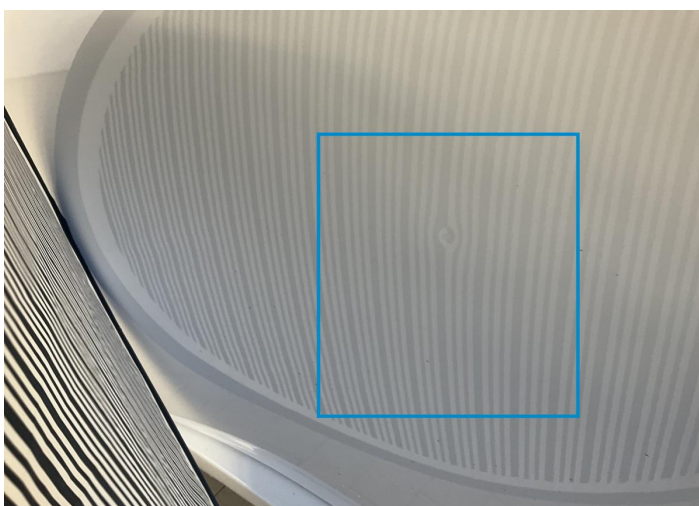
Component		Damage	Comments
1	Rim / Front Right	Out of Bodywork / Scratch	
2	Mirror / Front Left	Bodywork / Breakage / Crack	
3	Door / Front Left	Bodywork / Dent / Dent	
4	Bumper / Back	Paint / Scratch / Scuff	
5	Roof	Bodywork / Dent / Dent	
6	Hood	Bodywork / Dent / Dent	
7	Door / Front Left	Bodywork / Dent / Dent	



1. Rim / Front Right
Out of Bodywork / Scratch -



2. Mirror / Front Left
Bodywork / Breakage / Crack -



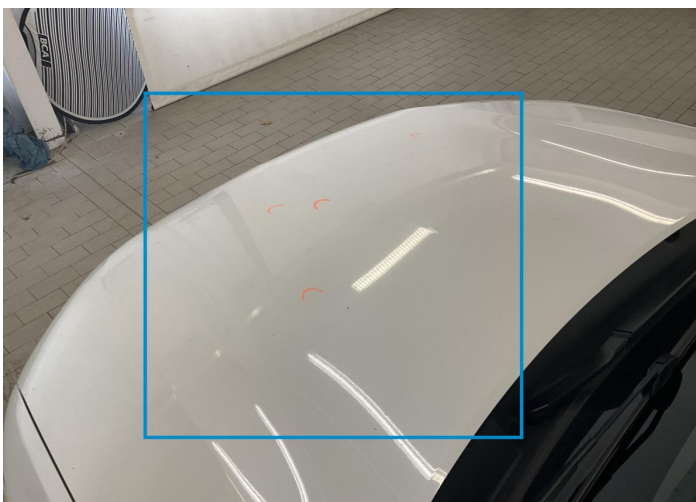
3. Door / Front Left
Bodywork / Dent / Dent -



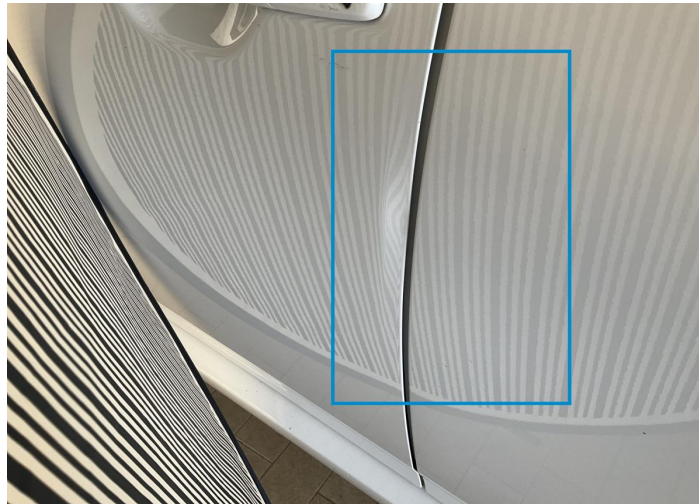
4. Bumper / Back
Paint / Scratch / Scuff -



5. Roof
Bodywork / Dent / Dent -



6. Hood
Bodywork / Dent / Dent -



7. Door / Front Left
Bodywork / Dent / Dent -

Mechanical Condition

Control Lights

ABS Warning Light	✓	ESP Fault/Traction Control Malfunction Light	✓
Airbag Warning Light	✓	Oil Pressure Warning Light	✓
Brake Warning Light	✓	Power Steering Warning Light	✓
Alternator / Battery	✓	No Dashboard Lights	✓
Display Defect	✓	Tire Pressure Monitoring System	✓

Engine

Engine Status / EML	✓	Engine Leak Visible	✓
Engine Starts	✓		

Equipments Test

Electric Windows	✓	Audio Equipment	✓
AC / Heating System	✓	Main & Spare Keys Functioning	✓
Navigation System	✓	Parking Sensors / Cameras Functioning	✓
Other Equipments	✓		

Levels

Brakes Fluid	✓	Coolant Fluid	✓
--------------	---	---------------	---

Hybrid/EV

Charge Lead Condition	✓	Charge Port Condition	✓
Hybrid System Fault	✓		

Test Drive Inspection

Steering Wheel			
Steering Noise / Anomaly		✓	
Engine			
Engine Noise	✓	The Gears Scratch / Skip / Abnormal Operation	✓
Fume Quantity	✓	Power Loss	✓
Brake			
Brake System Anomaly		✓	
General			
Test Driven Status		✓	
✓ <i>No troubles detected, good condition or correct tests, according to vehicle age and mileage</i>			
! <i>Damages or malfunction detected that requires repairs by the buyer</i>			
NA <i>Not applicable</i>			
= <i>Not tested</i>			

Disclaimer

Please also note the "UserGuide condition report", which shows the scope of the vehicle description.

[User Guide](#)