



Expertise

Protocol number: 41830977
Order number / reference: 25277617
Inspection date: 6 Oct 2025

Manufacturer: Ford

Model: Ranger 2,0 I EcoBlue Autm. XLT

VIN: 6FPPXXMJ2PMB09923



Vehicle details	
Manufacturer / Type / Model / Equipment	
Ford Ranger 2,0 I EcoBlue Autm. XLT	
Vehicle Identification number	6FPPXXMJ2PMB09923
Mileage (Read)	162,293 km
First registration	16 Sept 2021
Number of holders	1
Power / Engine displacement	125 kw / 1,996 ccm
Fuel type / Cylinder	Diesel / 4
Gearbox / Number of gears	Automatic / 10
Type of drive	All-wheel drive
Type of vehicle	SUV
Colour / colour code	Frozen White Uni
Doors / Seats	4 / 5
Upholstery type	Cloth
Colour of upholstery	Black
Vehicle with smoke odor	Yes (not ozone treated)



Vehicle details

Maintenance booklet / proof	digital proof / complete	Next maintenance in	
Last maintenance on / at	06/2025 at 151,636 km		
Key is / should be	1 / 2	FZG documents	ZB#2 (B) was available (copy), ZB#1 (S) was not available
		Letter No.	GD550400
Previous damage / Accident	Detectable	Repainting	Detectable
Inspection conditions	sufficient	Lifting equipment / pit	yes
Test drive	Not performed	Engine function test	Performed
Manufacturer key number/ type code number	1566 / AAL 00071		
Emission standard	EURO6;WLTP;CI;PI/CI;N1 III, N2	Fine dust sticker	
Permitted total weight	3,270 kg	Empty weight	

Tyres

Mounted tyres

#	Tyre size	Type of tyre	Manufacturer	Tread depth
1)	265/60 R18 110H	All-season tyres on Light alloy	Michelin	5mm / 5mm
2)	265/60 R18 110H	All-season tyres on Light alloy	Michelin	6mm / 6mm

Replacement

Typ	Tyre size	Type of tyre	Manufacturer	Tread depth
E	265/60 R18 110H	All-season tyres on Steel	Continental	9 mm

Legend: Tread depth information for tires on the left is in the first place, for tires on the right is in the second place on the axle in the direction of travel



Equipment

Standard equipment

- | | |
|---|---|
| <ul style="list-style-type: none"> • ABS • Airbag: Front and side airbag system for driver and front passenger • All-wheel drive (switchable four-wheel drive) (with electronic gear selection) • Flooring: Carpet • Differential open • Third brake light • Electric rear windows • Heated windscreen • Warranty 2-year Ford new car warranty including the Ford Assistance mobility guarantee • Transmission: 10-speed automatic transmission • Grab handle, driver and passenger side • Rear window, heated • Interior mirror automatically dimming • Air conditioning • Paint finish: Solid paint • Load support with protective frame at the rear of the cabin • Leather gear knob • Fog light • Package: Wheel 5 (light alloy wheels 7J x 16 with 255/70 R 16 - 6-spoke Y-design, black - spare wheel steel wheel) • Package: Seat 47 (driver's seat, manually adjustable - side airbag for driver and front passenger - map pocket on the backrest of the driver's seat) • Particulate filter: Diesel particulate filter (DPF) (with SCR catalyst) • Tire pressure monitoring system • Rear mud flaps • Side skirt protection plastic • Start-stop system (including front spoiler lip) • Socket: 12-volt connection, one connection in the rear • Daytime running light • Rear underbody protection, black • Immobiliser | <ul style="list-style-type: none"> • Airbag: Passenger airbag deactivation function • Airbag: Knee airbag for driver • Airbag: Head airbags, above the side windows • Exterior mirrors, electrically adjustable and heated • Exterior mirror housings in chrome decor • On-board computer • tachometer • ESP (Electronic Stability Program) • Electric front windows • Floor mats: Driver's floor mat, textile • Cruise control system (forward collision warning - intelligent speed assistant with adjustable speed limiter - lane keeping assistant - traffic sign recognition system) • tailgate lock • Rear window wiper • Isofix mount (outer rear seats) • Headrests (2) front • Load compartment protection tray (internal lashing eyes - 12-volt connection at the rear of the platform) • Centre console • Package: Cargo space 5 (load support with protective frame at the rear of the cabin) • Package: Rear Seat 11 (3-seater bench seat with three height-adjustable headrests, three three-point safety belts, center armrest and fold-up seat cushion, ISOFIX mounts on the outer seats of the second row, warning tone for unfastened seat belts in the front and rear) • Upholstery: Cloth • Windscreen wipers with rain sensor (including headlight assistant with day/night sensor) • Power steering, electro-mechanical (EPAS (Electric Power Assisted Steering)) • Front bumper in body color • Door handles in chrome decor • Lashing eyes • Central/double locking with remote control |
|---|---|

Extra equipment

- | | |
|---|--|
| <ul style="list-style-type: none"> • Trailer hitch (13-pin - 90° tailgate opening angle - Lane Keeping Assist) | <ul style="list-style-type: none"> • Radio: CD incl. Ford SYNC 3, DAB, navigation system • Digital tachograph - preparation (gearbox plug) |
|---|--|

Retrofitted equipment

- | | |
|---|--|
| <ul style="list-style-type: none"> • Backup Camera Kit | <ul style="list-style-type: none"> • Load compartment cover |
|---|--|



Brief expert findings

Documents submitted	At the time of the inspection, the registration certificate Part 2 (letter) was available, but the registration certificate Part 1 (certificate) was not. (Copy)
VIN comparison	The vehicle identification number (VIN) was read from the vehicle and its conformity with the submitted documents was verified during the inspection by the undersigned.
Inspection	The inspection conditions were sufficient for the assessment of the vehicle. Lifting equipment and a pit were available for examining the vehicle.
Test drive	No test drive/maneuvering was carried out during the inspection of the vehicle.
Engine function test	An engine test run was performed.

Value reducing factors

No.	Component group	Description
1	Trim / covers	Door trim - front left side (Griff) - Scratch(es) - Replace
2	Body	C-pillar - right side - dent(s) - Smooth repair work
3	Trim / covers	Door trim - rear right side - Scratch(es) - Loss in value
4	Boot lid / rear door	Boot lid (Öffnet nicht) - Functional / admissibility - Perform diagnosis
5	Interior	Interior (Rauch) - Odour - Ozone treatment
6	Body	Body - Glued / labelled - De-glue / neutralise
7	Body	Body - Damage by hail - Smooth repair work
8	Boot lid / rear door	Boot lid - Dent / paintcoat damage - Repair and paint
9	Roof	Roof (+ Dellen) - Corrosion - Repair and paint

Wear and tear

No.	Component group	Description
1	Interior	Boot cover / roller cover (Kein Schlüssel vorhanden, Abdeckung verriegelt) - Functional / admissibility - No deduction
2	Trim / covers	Roof lining - Scratch(es) - No deduction
3	Vehicle glazing	Windscreen - Stone chips - No deduction
4	Fog lamp	Fog lamp - front right side (Blende) - Scratch(es) - No deduction
5	Front bumper	Front bumper - Scratch(es) - No deduction
6	Instrument panel	Glove box lid - Scratch(es) - No deduction
7	Wheel / tyres	Alloy rim - front left side - Scratch(es) - No deduction
8	Trim / covers	Door trim - rear left side - Scratch(es) - No deduction
9	Interior	Boot cover / roller cover (Nachgerüstet) - No deduction

The vehicle shows signs of wear commensurate with its age and use.

Missing parts

Description

Equipment - Vehicle key

Previous damages

No.	Previous damage	Extent of damage (Net)
1	Front, Provided by user / customer, from 7 Jan 2022	2.228,81 €

Repainting



No. Repainting

1 Bonnet, Professionally carried out, Invoice of repair done Non-existent

Paint coat thickness measurement

Bonnet 182 µm

Order/Scope of order

The order was placed to prepare a sales report for the vehicle described. This includes the following:

- Description of core relevant information about the vehicle
- Documentation of equipment features
(*Delivery by third-party service providers*)
- Documentation of damage, defects, missing parts
- Documentation of previous damage, unrepaired previous damage, repainting
- a brief visual or functional inspection of the equipment details if possible.
(*Functional tests of driver assistance systems are not included in the scope of services!*)
- a photo documentation of the vehicle

Basis for the order

This product is based on the guidelines for vehicle returns and valuations of light commercial vehicles from Alphabet Fuhrparkmanagement GmbH. The expert makes the explicit findings in each individual case objectively within the framework of the specified standards based on his or her own expertise.

The vehicle inspection takes place in a disassembled state.

Damage or defects that can only be detected during disassembly/diagnosis work or through advanced knowledge remain within the scope of the prognosis risk. An extended risk exists for concealed defects caused by fraudulent deception and not identifiable by the expert.

Damage or defects resulting from normal use or wear and tear of the vehicle will be accepted according to the applicable standard.

There was no explicit identification or monetary consideration of the expected features within the product.

Features which in their nature and severity slightly exceed normal use but do not constitute unacceptable damage will be documented and identified under signs of use if necessary.

Damage or defects that can no longer be attributed to normal use or wear and tear according to the underlying standard are listed in the product under value-reducing factors.

Depending on the product specification, a monetary ID can be provided. If this takes place, the costs can be 100% d or pro rata depending on the vehicle's age and mileage.

Previous damages

According to available information previous damages were repaired at the vehicle. Traces of repairs, which allow conclusions about the area of repair, were not recognizable during the inspection.

Comments

- Der montierte Radsatz ist höherwertig/gleichwertig. Es wurde kein Nachweiß erbracht.



ALPHABET

Figure 1: Diagonal front (left)



ALPHABET

Figure 2: Diagonal front (right)



ALPHABET

Figure 3: Diagonal rear (left)



ALPHABET

Figure 4: Diagonal rear (right)



Figure 5: Interior - front



Figure 6: Interior - rear



Figure 7: Instrument cluster



Figure 8: Instrument panel



Figure 9: Interior 360° view



Figure 10: VIN



Figure 11: Mounted tyres

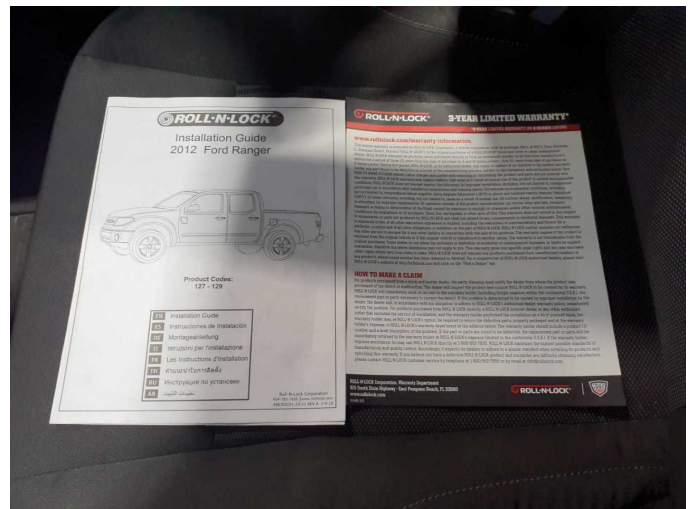


Figure 12: Documents

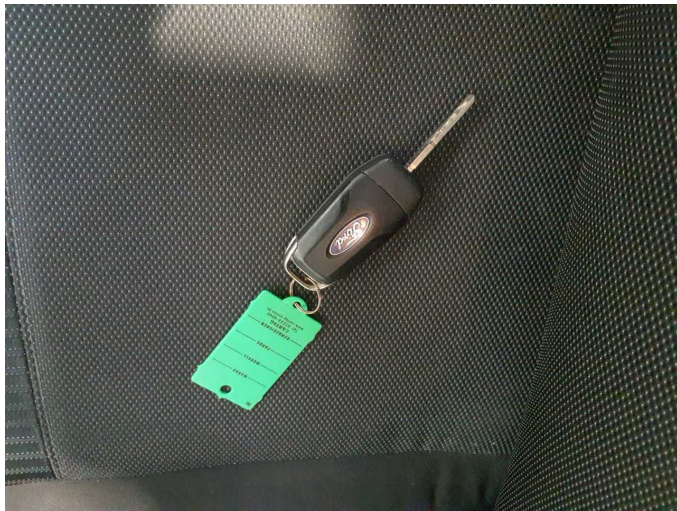


Figure 13: Documents

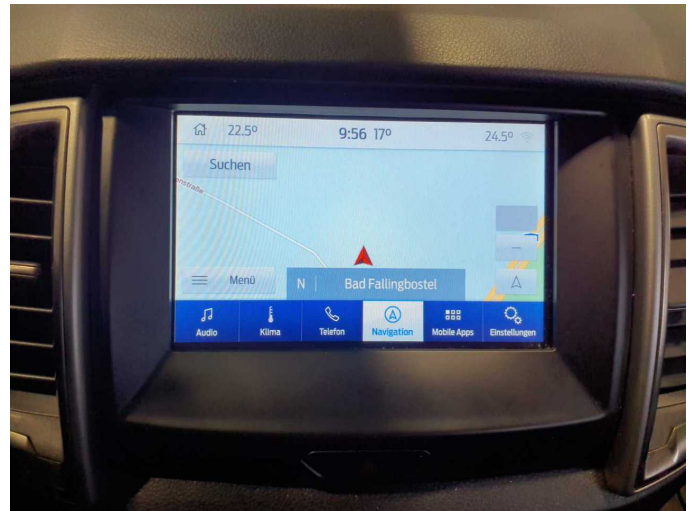


Figure 14: Navigation



Figure 15: Misc.



Figure 16: Misc.



Figure 17: Misc.



Figure 18: Misc.



Figure 19: Misc.



Figure 20: Misc.



Figure 21: Misc.



Figure 22: Misc.



Figure 23: Misc.



Figure 24: Misc.



Figure 25: Misc.



Figure 26: Misc.



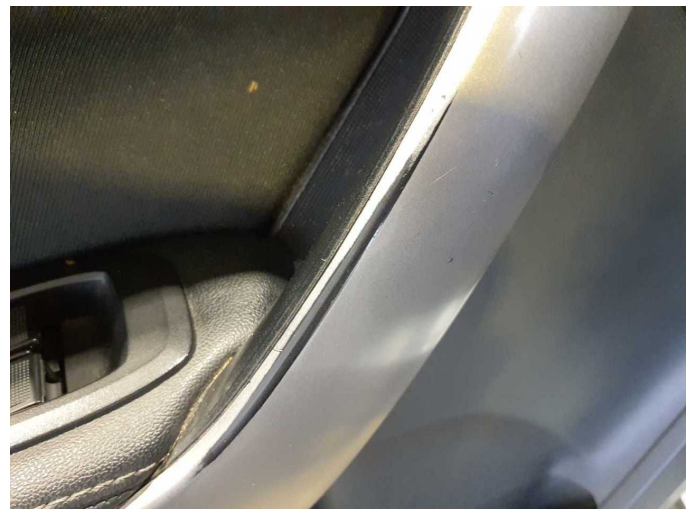
Figure 27: Misc.



Figure 28: Misc.



Damage 1: Trim / covers: Door trim - front left side (Griff) - Scratch(es) - Replace



Damage 1: Trim / covers: Door trim - front left side (Griff) - Scratch(es) - Replace



Damage 2: Body: C-pillar - right side - dent(s) - Smooth repair work



Damage 2: Body: C-pillar - right side - dent(s) - Smooth repair work



Damage 3: Trim / covers: Door trim - rear right side - Scratch(es) - Loss in value



Damage 3: Trim / covers: Door trim - rear right side - Scratch(es) - Loss in value



Damage 3: Trim / covers: Door trim - rear right side - Scratch(es) - Loss in value



Damage 3: Trim / covers: Door trim - rear right side - Scratch(es) - Loss in value



Damage 4: Boot lid / rear door: Boot lid (Öffnet nicht) - Functional / admissibility - Perform diagnosis



Damage 5: Interior: Interior (Rauch) - Odour - Ozone treatment



Damage 5: Interior: Interior (Rauch) - Odour - Ozone treatment



Damage 5: Interior: Interior (Rauch) - Odour - Ozone treatment



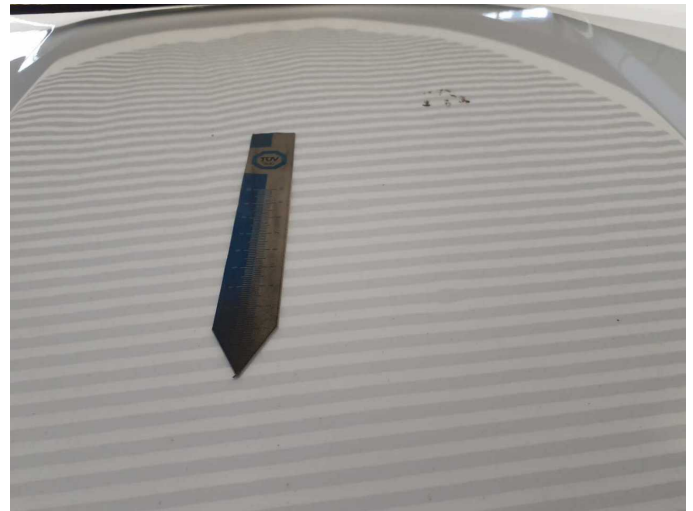
Damage 5: Interior: Interior (Rauch) - Odour - Ozone treatment



Damage 7: Body: Body - Damage by hail - Smooth repair work



Damage 7: Body: Body - Damage by hail - Smooth repair work



Damage 7: Body: Body - Damage by hail - Smooth repair work



Damage 7: Body: Body - Damage by hail - Smooth repair work



Damage 7: Body: Body - Damage by hail - Smooth repair work



Damage 8: Boot lid / rear door: Boot lid - Dent / paintcoat damage - Repair and paint



Damage 8: Boot lid / rear door: Boot lid - Dent / paintcoat damage - Repair and paint



Damage 8: Boot lid / rear door: Boot lid - Dent / paintcoat damage - Repair and paint



Damage 8: Boot lid / rear door: Boot lid - Dent / paintcoat damage - Repair and paint



Damage 8: Boot lid / rear door: Boot lid - Dent / paintcoat damage - Repair and paint



Damage 8: Boot lid / rear door: Boot lid - Dent / paintcoat damage - Repair and paint



Damage 8: Boot lid / rear door: Boot lid - Dent / paintcoat damage - Repair and paint



Damage 8: Boot lid / rear door: Boot lid - Dent / paintcoat damage - Repair and paint



Damage 9: Roof: Roof (+ Dellen) - Corrosion - Repair and paint



Damage 9: Roof: Roof (+ Dellen) - Corrosion - Repair and paint



Damage 9: Roof: Roof (+ Dellen) - Corrosion - Repair and paint



Wear and tear 7: Wheel / tyres: Alloy rim - front left side - Scratch(es) - No deduction



Wear and tear 7: Wheel / tyres: Alloy rim - front left side - Scratch(es) - No deduction



Wear and tear 8: Trim / covers: Door trim - rear left side - Scratch(es) - No deduction



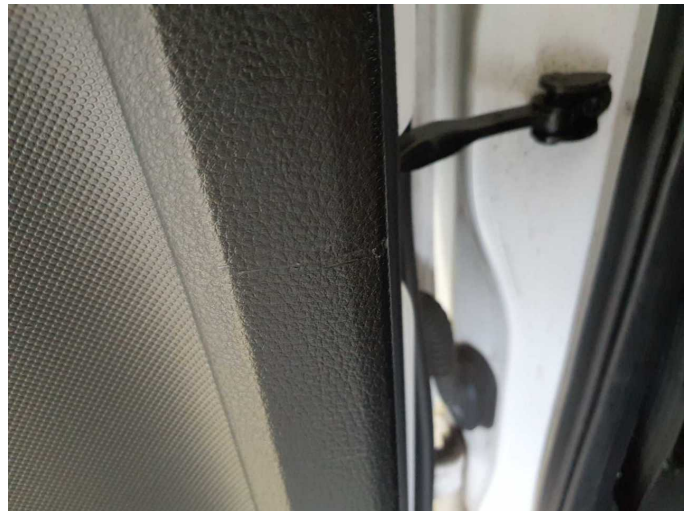
Wear and tear 8: Trim / covers: Door trim - rear left side - Scratch(es) - No deduction



Wear and tear 8: Trim / covers: Door trim - rear left side - Scratch(es) - No deduction



Wear and tear 8: Trim / covers: Door trim - rear left side - Scratch(es) - No deduction



Wear and tear 8: Trim / covers: Door trim - rear left side - Scratch(es) - No deduction



Wear and tear 9: Interior: Boot cover / roller cover (Nachgerüstet) - No deduction



Wear and tear 9: Interior: Boot cover / roller cover (Nachgerüstet) - No deduction



Repainting 1: Bonnet



Repainting 1: Bonnet



Wartungshistorie

(gemäß Auftraggeber Informationen)

Fahrgestellnummer: 6FPPXXMJ2PMB09923
Hersteller / Modell: FORD FORD Ranger 2,0 I EcoBlue Autm. XLT

Datum	KM-Stand	Beschreibung
18.06.2025	151.636	Motoröl b. Wartung; Ölfilter ern; Regelwartungsdienst; Wartung Sonstiges
06.01.2025	125.419	Bremsklötze vorne; Bremsscheiben + Klötze v; Bremsscheiben vorne; Kraftstofffilter ern; Luftfiltereinsatz ern; Motoröl b. Wartung; Ölfilter ern; Regelwartungsdienst; Wartung Sonstiges
03.07.2024	102.018	Motoröl b. Wartung; Ölfilter ern; Regelwartungsdienst; Wartung Sonstiges
06.12.2023	81.299	Bremsflüssigkeit; Bremsflüssigkeit ern; Kraftstofffilter ern; Luftfiltereinsatz ern; Motoröl b. Wartung; Ölfilter ern; Regelwartungsdienst; Wartung Sonstiges
21.09.2023	74.364	AU
22.05.2023	60.555	Motoröl b. Wartung; Ölfilter ern; Regelwartungsdienst; Wartung Sonstiges
10.11.2022	42.476	Kraftstofffilter ern; Luftfiltereinsatz ern; Motoröl b. Wartung; Ölfilter ern; Regelwartungsdienst; Wartung Sonstiges
01.04.2022	21.863	Motoröl b. Wartung; Ölfilter ern; Regelwartungsdienst; Wartung Sonstiges