



JEEP Compass II 2017 Diesel

Compass 2.0 mjt Limited Navi 4wd 140cv auto

VIN NO 3C4NJDCY0JT422768
Registration Number FS227MV



MOT Date	Number of Owners	Number of Keys	Odometer Reading
2024-09-23	-	-	123451 km
Last Service	Last Service Mileage	First Registration Date	Country First Registered
-	-	2018-09-05	Italy

Inspection Report Summary

Customer	BCA Lodi	Report Number	P20250902112232
Inspection Date / Place	2025-09-02 / BCA Lodi	Cosmetic Grade	5

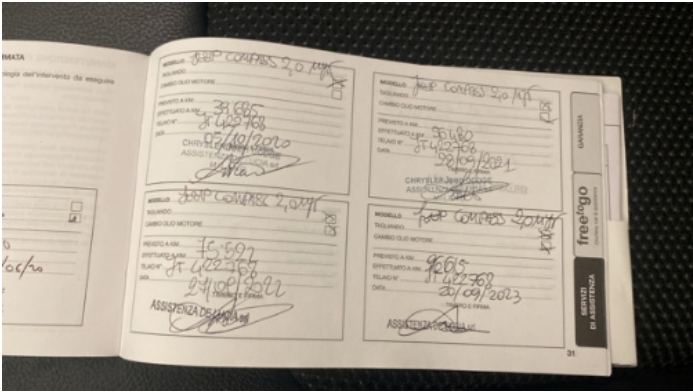
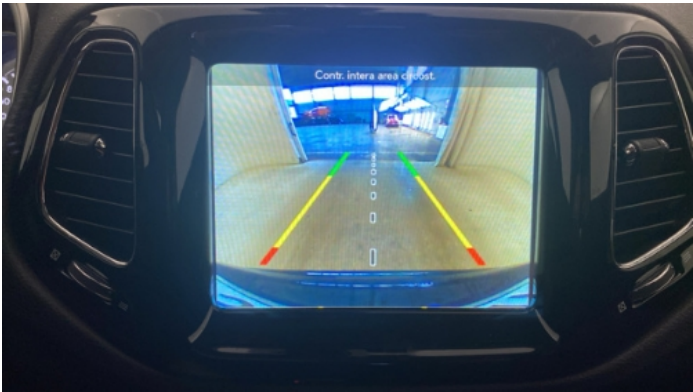
Vehicle Summary

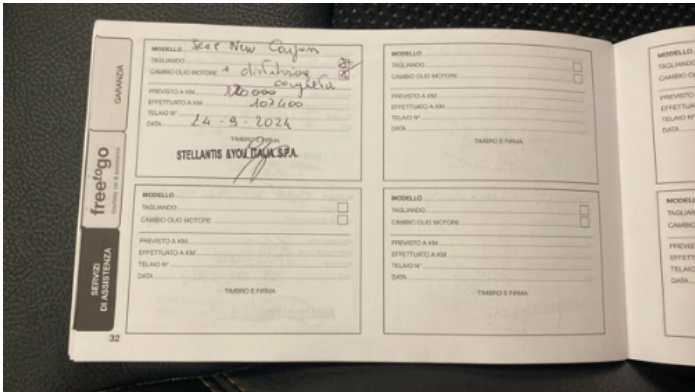
Vehicle Condition	Runner	VAT Type	Margin
Fuel Type	Diesel	Gearbox Type	Automatic
Colour	Blue	Engine Size (cc)	1956
Engine Size	2.0	No of Doors	5
Body Type	SUV	Drive Train	All-Wheel-Drive
Seat Colour	Black	No of Seats	5
Seat Covering Name		Seat Covering	Cloth/Leather
Charging Cables		NEDC CO2 Rating (q/km)	148

Vehicle History & Documents

Service Book Available	-	Next Service Mileage	km
Previous Usage	Normal Use	Imported	No
Manufacturer Warrenty			







Equipment

Central locking	Rain sensitive windscreen wipers	Alloys wheels	Electrically folding wing mirrors
Satellite navigation	Parcel Shef	Remote central locking	Traction control
Tyre Mobility Kit	Power assisted steering	Rear parking sensors	Digital Radio
Front parking sensors	Volante multifuncion	Remote adjusting wing mirrors	Cruise control
Trip Computer	Stability control		

Wheels & Tyres

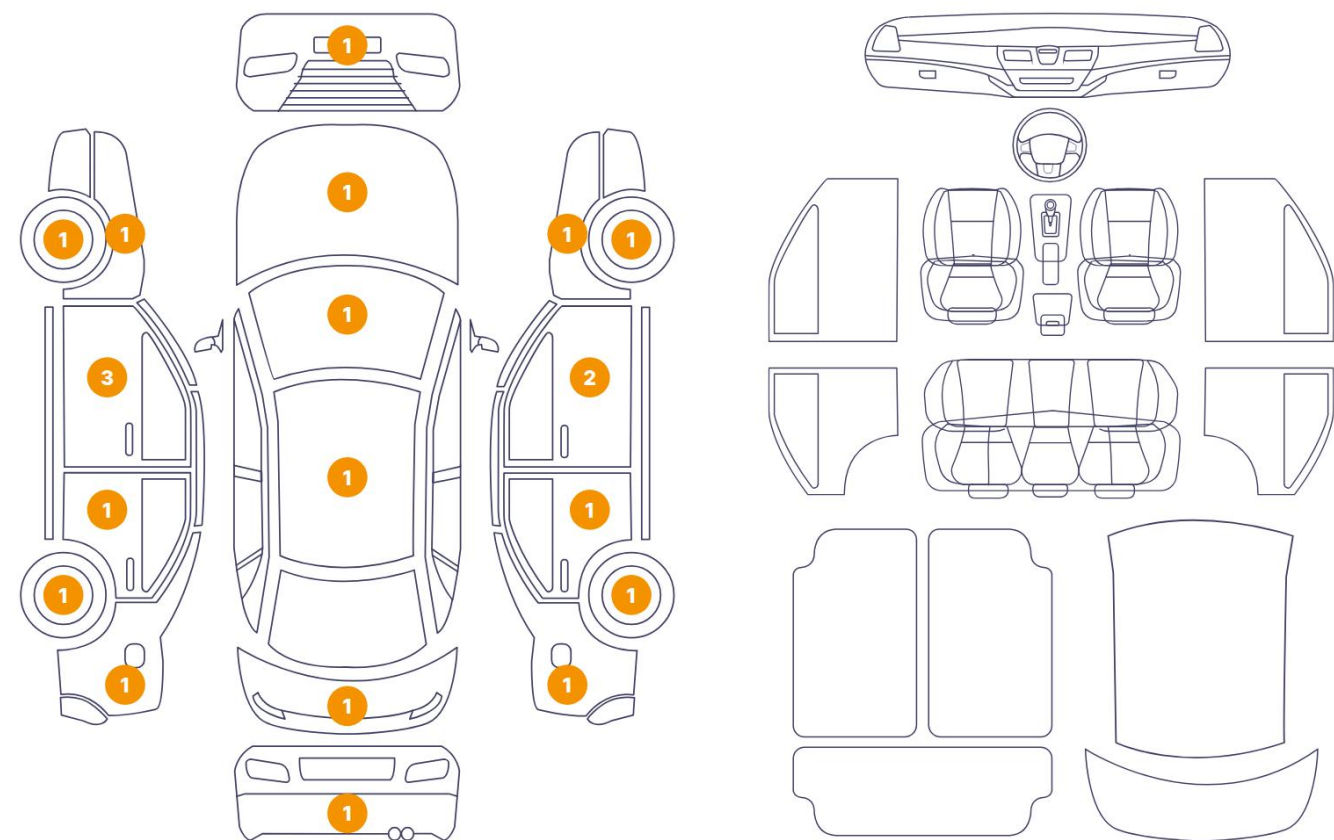
Mounted Tires

Tyre / Wheel Type	Four Seasons	
	GOODYEAR GOODYEAR-VECTOR 4SEASONS	225/55//R18 - 102W / 3 mm
	GOODYEAR GOODYEAR-VECTOR 4SEASONS	225/55//R18 - 102W / 3 mm
	GOODYEAR GOODYEAR-VECTOR 4SEASONS	225/55//R18 - 102W / 3 mm
	GOODYEAR GOODYEAR-VECTOR 4SEASONS	225/55//R18 - 102W / 3 mm

Cosmetic Damage

21 Danni

0 Danni



Component		Damage	Comments
1	Windshield / Front	Glass Break / Impact	
2	Hood	Paint / Chipping	
3	Bumper / Front	Bodywork / Dent	
4	Rim / Front Left	Out of Bodywork / Scratch	
5	Fender / Front Left	Paint / Scratch / Line	
6	Mirror Shell / Front Left	Paint / Scratch / Line	
7	Door / Front Left	Paint / Scratch / Line	
8	Door / Back Left	Paint / Scratch / Line	
9	Fender / Back Left	Paint / Scratch / Line	
10	Rim / Back Left	Out of Bodywork / Scratch	
11	Pillar / Front Left	Paint / Chipping	
12	Bumper / Back	Bodywork / Dent	
13	Tailgate	Bodywork / Dent	

14	Fender / Back Right	Bodywork / Dent
15	Rim / Back Right	Out of Bodywork / Scratch
16	Door / Back Right	Bodywork / Dent
17	Door / Front Right	Bodywork / Dent
18	Mirror Shell / Front Right	Paint / Scratch / Line
19	Fender / Front Right	Paint / Scratch / Line
20	Rim / Front Right	Out of Bodywork / Scratch
21	Roof	Bodywork / Dent



1. Windshield / Front
Glass Break / Impact -



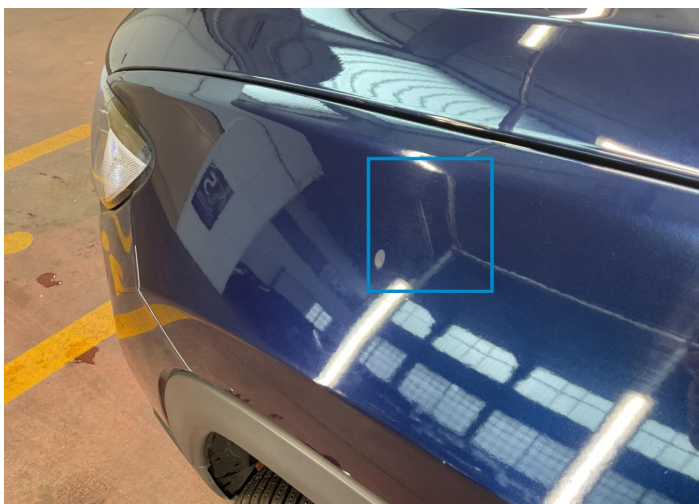
2. Hood
Paint / Chipping -



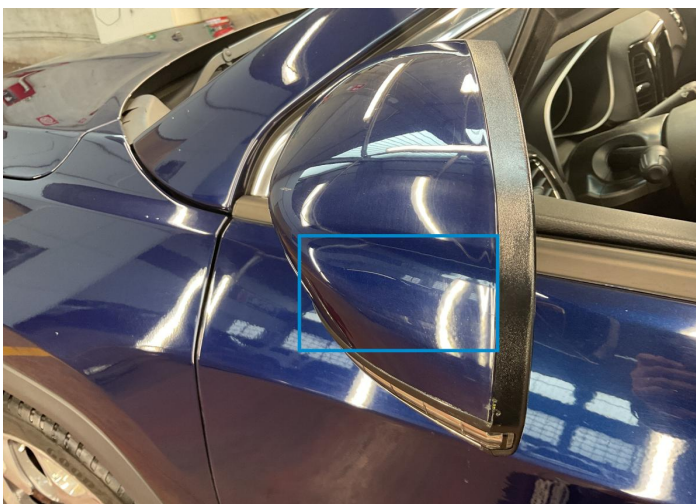
3. Bumper / Front
Bodywork / Dent -



4. Rim / Front Left
Out of Bodywork / Scratch -



5. Fender / Front Left
Paint / Scratch / Line -



6. Mirror Shell / Front Left
Paint / Scratch / Line -



7. Door / Front Left
Paint / Scratch / Line -



8. Door / Back Left
Paint / Scratch / Line -



9. Fender / Back Left
Paint / Scratch / Line -



10. Rim / Back Left
Out of Bodywork / Scratch -



11. Pillar / Front Left
Paint / Chipping -



12. Bumper / Back
Bodywork / Dent -



13. Tailgate
Bodywork / Dent -



14. Fender / Back Right
Bodywork / Dent -



15. Rim / Back Right
Out of Bodywork / Scratch -



16. Door / Back Right
Bodywork / Dent -



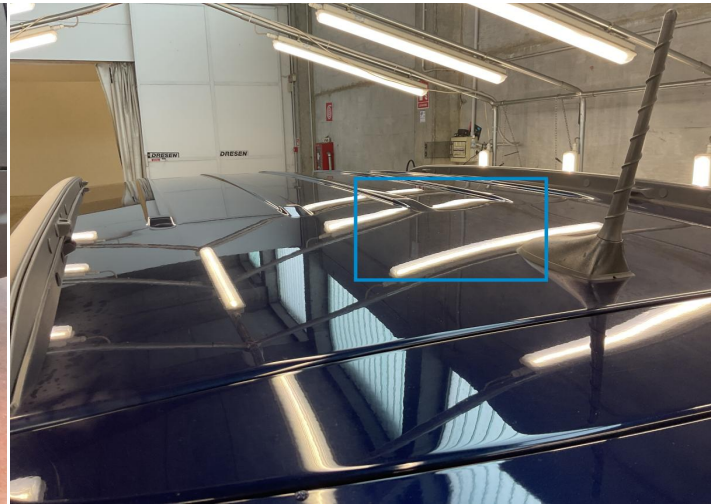
17. Door / Front Right
Bodywork / Dent -



18. Mirror Shell / Front Right
Paint / Scratch / Line -



20. Rim / Front Right
Out of Bodywork / Scratch -



21. Roof
Bodywork / Dent -

Mechanical Condition

Engine			
Vehicle Start - up	✓	Engine Starts	✓
Engine Leak Visible	✓		
Clutch			
Clutch Functioning	✓		
Equipments Test			
Other Equipments	✓	AC / Heating System	✓
Levels			
Brakes Fluid	✓	Coolant Fluid	⚠

Test Drive Inspection

Other Checks			
Steering	✓	Brakes	✓
Suspension	✓		
Gearbox			
Manual Gearbox	✓		
General			
Test Driven Status	✓		
Equipments Test			
Steering Noise / Anomaly	✓		
Engine			
Power Loss	✓	Fume Quantity	✓
Engine Noise	⚠		
✓ No troubles detected, good condition or correct tests, according to vehicle age and mileage			
⚠ Damages or malfunction detected that requires repairs by the buyer			
NA Not applicable			
☐ Not tested			