



JEEP Cherokee

Cherokee 2.0 Multijet Active Drive I Automatik

VIN NO 1C4PJMDYXFW622890
Registration Number YXFW622890



MOT Date

2026-11-01

Last Service



Number of Owners

3

Last Service Mileage



Number of Keys

2

First Registration Date

2015-02-23

Odometer Reading

108681 km

Country First Registered

Germany

Inspection Report Summary

Customer	BCA Online	Report Number	P20250917122259
Inspection Date / Place	2025-09-17 / BCA Berlin	Cosmetic Grade	4

Vehicle Summary

Vehicle Condition	Runner	VAT Type	Margin
Fuel Type	Diesel	Road Worthy	Unknown
Colour	Black	Engine Size (cc)	1956
Engine Size	2.0	No of Doors	5
Body Type	SUV	Drive Train	All-Wheel-Drive permanent
Seat Colour		No of Seats	5
Seat Covering Name	Black	Seat Covering	Leather
Charging Cables		NEDC CO2 Rating (q/km)	154
Gearbox Type	Automatic		

Vehicle History & Documents

Service Book Available	Present	Next Service Mileage	km
Previous Usage		Imported	No
Manufacturer Warrenty			







Equipment

Tinted Glass	Airbag Status	Anti-lock braking	Diesel particulate filter
Front parking sensors	Remote central locking	Roof rails	Stability control
Electrically folding wing mirrors	Radio	Tow ball	Alloys wheels
Cruise control	Front fog lamps	Remote adjusting wing mirrors	Reversing Camera
Satellite navigation	Xenon headlamps	Electric tailgate	Rear parking sensors

Equipment Details

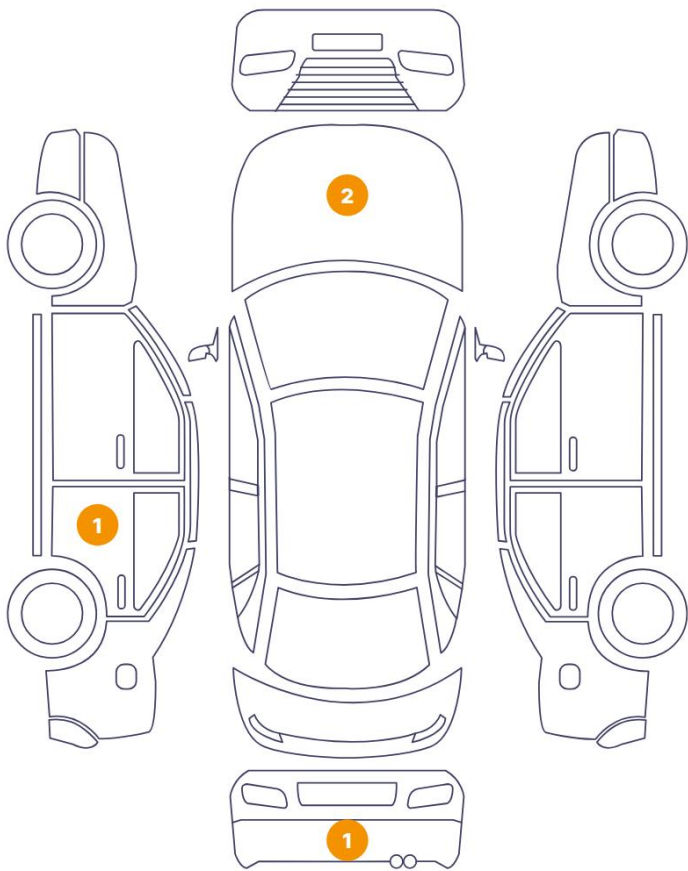
Tow Ball Type	Detachable	Air Conditioning	Dual Zone Climate Control
Alloy Wheel Size	18		

Wheels & Tyres

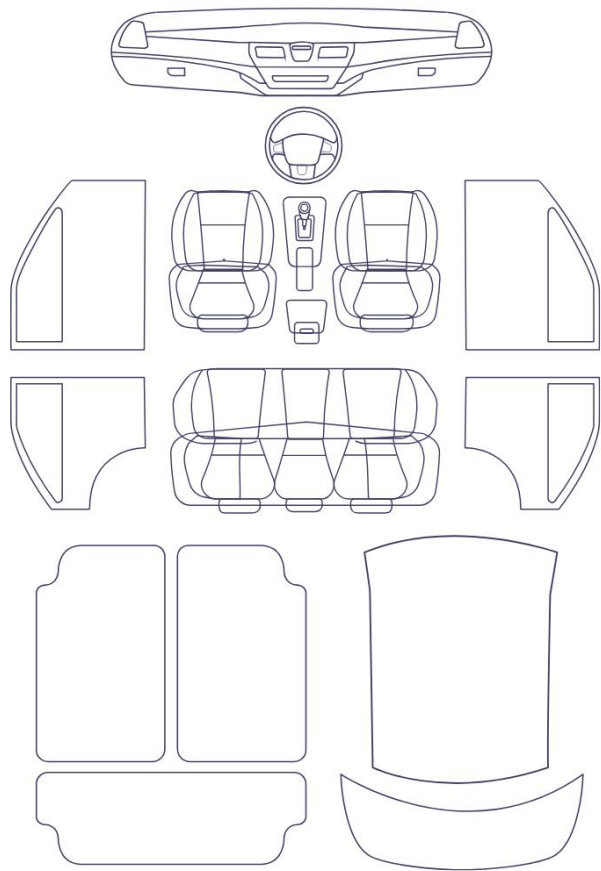
Right Front Tyre Depth	5	Left Front Tyre Depth	6
Right Rear Tyre Depth	5	Left Rear Tyre Depth	4

Cosmetic Damage

4 Schäden



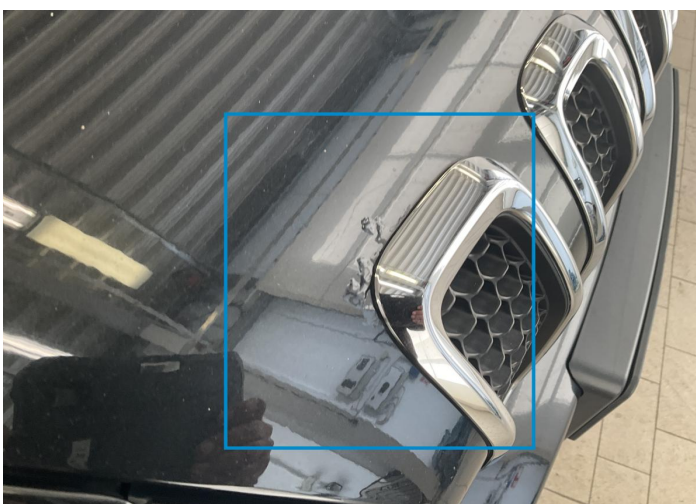
0 Schäden



Component		Damage	Comments
1	Hood	Bodywork / Breakage / Crack	
2	Hood	Paint / Corrosion	
3	Door / Back Left	Paint / Scratch / Scuff	
4	Bumper / Back	Paint / Scratch / Scuff	



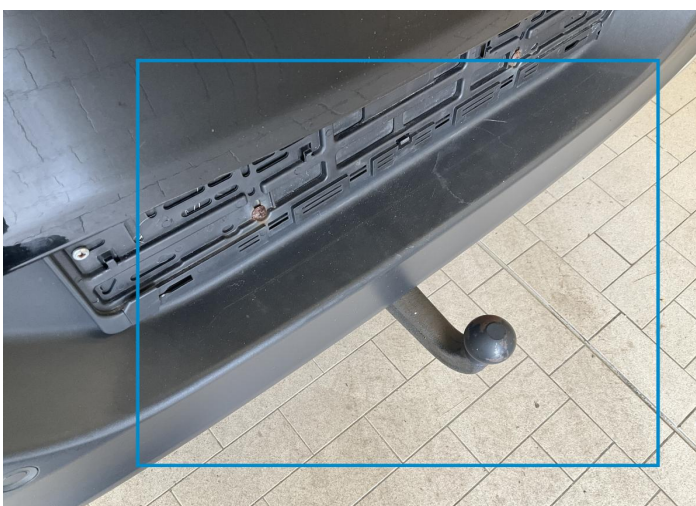
1. Hood
Bodywork / Breakage / Crack -



2. Hood
Paint / Corrosion -



3. Door / Back Left
Paint / Scratch / Scuff -



4. Bumper / Back
Paint / Scratch / Scuff -

Mechanical Condition

Control Lights

Display Defect	✓	ABS Warning Light	✓
ESP Fault/Traction Control Malfunction Light	✓	Airbag Warning Light	✓
Oil Pressure Warning Light	✓	Brake Warning Light	✓
Alternator / Battery	✓	No Dashboard Lights	✓
Power Steering Warning Light	✓	Tire Pressure Monitoring System	✓

Equipments Test

Main & Spare Keys Functioning	✓	Electric Windows	✓
Navigation System	✓	Audio Equipment	✓
Parking Sensors / Cameras Functioning	✓	AC / Heating System	✓
Other Equipments	✓		

Engine

Engine Status / EML	✓	Engine Leak Visible	✓
Engine Starts	✓		

Levels

Brakes Fluid	✓	Coolant Fluid	✓
--------------	---	---------------	---

Test Drive Inspection

Steering Wheel			
Steering Noise / Anomaly		✓	
Engine			
Engine Noise	✓	The Gears Scratch / Skip / Abnormal Operation	✓
Fume Quantity	✓	Power Loss	✓
Brake			
Brake System Anomaly		✓	
General			
Test Driven Status		✓	
✓ <i>No troubles detected, good condition or correct tests, according to vehicle age and mileage</i>			
! <i>Damages or malfunction detected that requires repairs by the buyer</i>			
NA <i>Not applicable</i>			
= <i>Not tested</i>			

Disclaimer

Please also note the "UserGuide condition report", which shows the scope of the vehicle description.

[User Guide](#)